



**TSCNET**  
Services

Version 1.0

# Recommendation to the TSO 2026

## Maximum Entry Capacity

in accordance with Article 26(7) of Regulation (EU) 2019/943 of the European Parliament and of the Council of 5 June 2019 on the internal market for electricity

Information Classification\*:  Public  Restricted  Confidential  OPDE Confidential

**Table of contents**

<b>1 Introduction</b> .....	<b>3</b>
1.1 TSO data collection .....	4
1.2 Input data .....	5
<b>2 MEC calculation</b> .....	<b>6</b>
2.1 Main assumptions .....	6
2.2 MEC results .....	7
<b>3 Detailed results</b> .....	<b>8</b>
3.1 Delivery period 2028-01-01 - 2028-03-31 .....	8
3.1.1 Contributions to MEC .....	8
3.1.2 Destination bidding zone(s) .....	12
3.1.3 Origin bidding zone(s) .....	14
3.2 Delivery period 2028-04-01 - 2028-06-30 .....	30
3.3 Delivery period 2028-07-01 - 2028-09-30 .....	30
3.4 Delivery period 2028-10-01 - 2028-12-31 .....	31
3.4.1 Contributions to MEC .....	31
3.4.2 Destination bidding zone(s) .....	35
3.4.3 Origin bidding zone(s) .....	37
<b>4 Glossary</b> .....	<b>53</b>

## 1 Introduction

Maximum Entry Capacity (MEC) is the maximum allowed foreign capacity (expressed in MW) of a given Capacity Market border that can participate in a capacity mechanism during a certain Delivery Period. The MEC should reflect the value that an interconnected system brings in terms of security of supply. Another formulation is to measure the 'amount of available MW' that the considered bidding zone can be provided with, by the interconnection of a system, in times of 'system stress/scarcity'.

The procedure of MEC calculation fully refers to the legal requirements of the:

- Regulation (EU) 2019/943 of 5 June 2019 on the internal market for electricity (the 'Electricity Regulation'),
- Decision no 36/2020 of the European Union Agency for the Cooperation of Energy Regulators of 22 December 2020 on technical specifications for cross-border participation in capacity mechanisms (the 'Technical Specification'),

The scope of the document includes the requirements of above mentioned legal requirements, in particular requirements set in Article 6(7) and Article 10 of Technical Specification.

The document is divided into the following sections:

- **Section 1** – introduction, data collection summary and an overview of the adequacy study including the underlying high-level assumptions; and
- **Section 2** - main assumptions underlying the calculation of the maximum entry capacity and MEC results; and
- **Section 3** – detailed results per each delivery period.

## 1.1 TSO data collection

RCC calculated MEC based on the information provided by the TSO(s) of the Member State(s) applying the CM. Those information are as follows.

*Table 1 TSO data collection summary*

<b>General Information</b>				
TSO name	PSE			
CM Member State	Poland			
Inputs collection information sent by RCC	16.12.2025			
Inputs collection information complete reply received	26.02.2026			
<b>CM Information Received</b>				
Delivery period (start-end date)	2028-01-01 – 2028-03-31	2028-04-01 – 2028-06-30	2028-07-01 – 2028-09-30	2028-10-01 – 2028-12-31
Bidding zone(s) of CM (destination bidding zone(s))	PL00	PL00	PL00	PL00
Bidding zones allowed for participation (origin bidding zones)	CZ00 DE00 LT00, SE01 SE02 SE03 SE04 SK00	CZ00 DE00 LT00 SE01 SE02 SE03 SE04 SK00	CZ00 DE00 LT00 SE01 SE02 SE03 SE04 SK00	CZ00 DE00 LT00 SE01 SE02 SE03 SE04 SK00
Preferred approach*	Net Position	Net Position	Net Position	Net Position
MTU selection criterion**	ENS: 0.1	ENS: 0.1	ENS: 0.1	ENS: 0.1
Adequacy study data	ERAA 2025 Q1 TY2028	ERAA 2025 Q2 TY2028	ERAA 2025 Q3 TY2028	ERAA 2025 Q4 TY2028

*\*in accordance with Article 6(6)a of Technical Specification*

*\*\* in accordance with Article 6(5) of Technical Specification*

## 1.2 Input data

The input data for the MEC recommendation is ERAA2025 developed by ENTSO-E and published on 17.02.2026.

The ERAA is a pan-European monitoring assessment of power system resource adequacy of up to 10 years ahead and is the successor to the Mid-term Adequacy Forecast (MAF). It is based upon state-of-the-art methodologies and probabilistic assessments, aiming to model and analyse possible events which can adversely impact the balance between supply and demand of electric power. It will be an important element for supporting qualified decisions by policy makers on strategic matters such as the introduction of capacity mechanisms (CMs).

*Table 2 Adequacy study main information*

<b>Adequacy study main information</b>	
Scenarios	<p>ERAA 2025, as a fifth edition, builds on the lessons learnt and improvements of the four past editions, striving for continuous methodological improvements to maximise its usefulness for policy-makers and market actors. The ERAA contains innovative approaches that analyse the economic rationale affecting generation capacity in Europe (the EVA) and assess how the physical network influences potential commercial energy exchanges between different study zones.</p> <p>The ERAA 2025 assessment spans the coming decade and focuses on four TYs: 2028, 2030, 2033, and 2035. TYs 2028 and 2030 are particularly important, because, if adequacy concerns are identified, Member States (MSs) need to implement policy decisions now (for example, applying for a CM), to ensure additional capacities are available in time. The 2033 and 2035 TYs provide insights into the longer-term horizon.</p> <p>Economic viability is assessed for a single reference scenario, with two different approaches to risk-aversion modelling for rational investors. The reference scenario is based on TSOs' projections considering various European and national policy targets (such as NECPs), accounting for capacities already contracted through auctions under CMs at the time of the assessment.</p>
Target years	2028, 2030, 2033, 2035

## 2 MEC calculation

### 2.1 Main assumptions

For all requested delivery periods, based on the inputs collection replies (Section 1.1), the MEC was calculated for the following assumptions.

*Table 3 Main assumptions for MEC calculation – delivery period 1*

<b>Delivery period</b>	<b>#1</b>	<b>#2</b>	<b>#3</b>	<b>#4</b>
Delivery period (start-end date)	2028-01-01 - 2028-03-31	2028-04-01 - 2028-06-30	2028-07-01 - 2028-09-30	2028-10-01 - 2028-12-31
Bidding zone of CM (destination bidding zone)	PL00			
Bidding zones allowed for participation (origin bidding zones)	CZ00, DE00 LT00 SE01 SE02 SE03 SE04 SK00			
TSO's preferred approach*	Net Position			
<b>RCC assumptions for the MEC calculation</b>				
CM Borders	PL00_CZ00 PL00_DE00 PL00_LT00 PL00_SE01 PL00_SE02 PL00_SE03 PL00_SE04 PL00_SK00			
Approach used	Net Position			
Is change of TSO's preferred	NO			
MTU selection criterion**	ENS: 0.1			
Resulting number of MTUs	2591	0	0	3744

*\*in accordance with Article 6(6)a of Technical Specification*

*\*\*in accordance with Article 6(5) of Technical Specification*

## 2.2 MEC results

For all requested delivery periods, based on the inputs collection replies (Section 1.1) and assumptions (Section 2.1), the MEC calculated values are following.

*Table 4 Maximum Entry Capacity results*

<b>Calculated MEC</b>				
Delivery period	2028-01-01 - 2028-03-31	2028-04-01 - 2028-06-30	2028-07-01 - 2028-09-30	2028-10-01 - 2028-12-31
<b>CM Borders</b>				
PLoo_CZoo	163.80 MW	0.00 MW	0.00 MW	167.45 MW
PLoo_DE00	369.05 MW	0.00 MW	0.00 MW	162.40 MW
PLoo_LT00	48.69 MW	0.00 MW	0.00 MW	96.82 MW
PLoo_SE01	227.63 MW	0.00 MW	0.00 MW	198.25 MW
PLoo_SE02	1607.31 MW	0.00 MW	0.00 MW	1091.68 MW
PLoo_SE03	3.11 MW	0.00 MW	0.00 MW	10.15 MW
PLoo_SE04	0.00 MW	0.00 MW	0.00 MW	0.00 MW
PLoo_SK00	468.23 MW	0.00 MW	0.00 MW	329.52 MW

### 3 Detailed results

For each delivery period the detailed results is presented on graphs i.e.:

- distribution of contributions to maximum entry capacity over all defined system stress MTUs with average shown;
- for the destination bidding zone:
  - distribution of energy not served value over all defined system stress MTUs with average value shown;
  - distribution of net position value over all defined system stress MTUs with average value shown;
  - distribution of total available capacity resource margin over all defined system stress MTUs, without cross-zonal exchanges with average value shown;
  - distribution of total available capacity resource margin over all defined system stress MTUs, with cross-zonal exchanges with average value shown;
- for the origin bidding zone(s):
  - distribution of net position value over all defined system stress MTUs with average value shown;
  - distribution of total available capacity resource margin over all defined system stress MTUs, without cross-zonal exchanges with average value shown;
  - distribution of total available capacity resource margin over all defined system stress MTUs, with cross-zonal exchanges with average value shown;

#### 3.1 Delivery period 2028-01-01 - 2028-03-31

##### 3.1.1 Contributions to MEC

Figure 1 Contribution Chart for PL00-SE03, delivery period 01.01.2028-31.03.2028

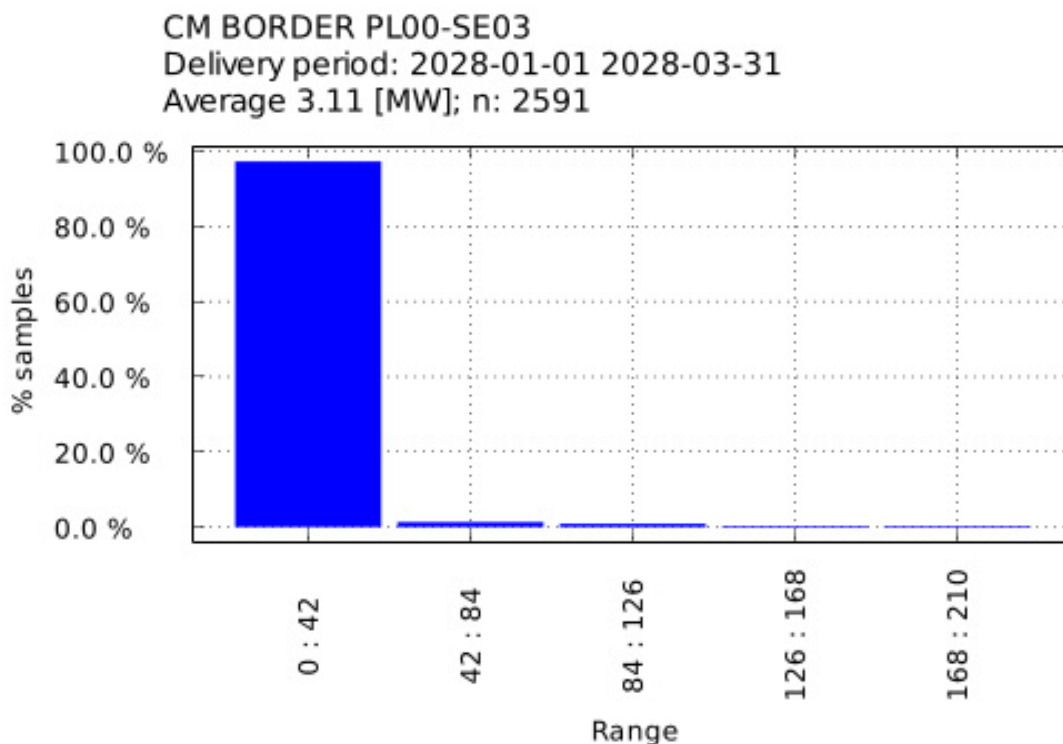


Figure 2 Contribution Chart for PL00-CZ00, delivery period 01.01.2028-31.03.2028

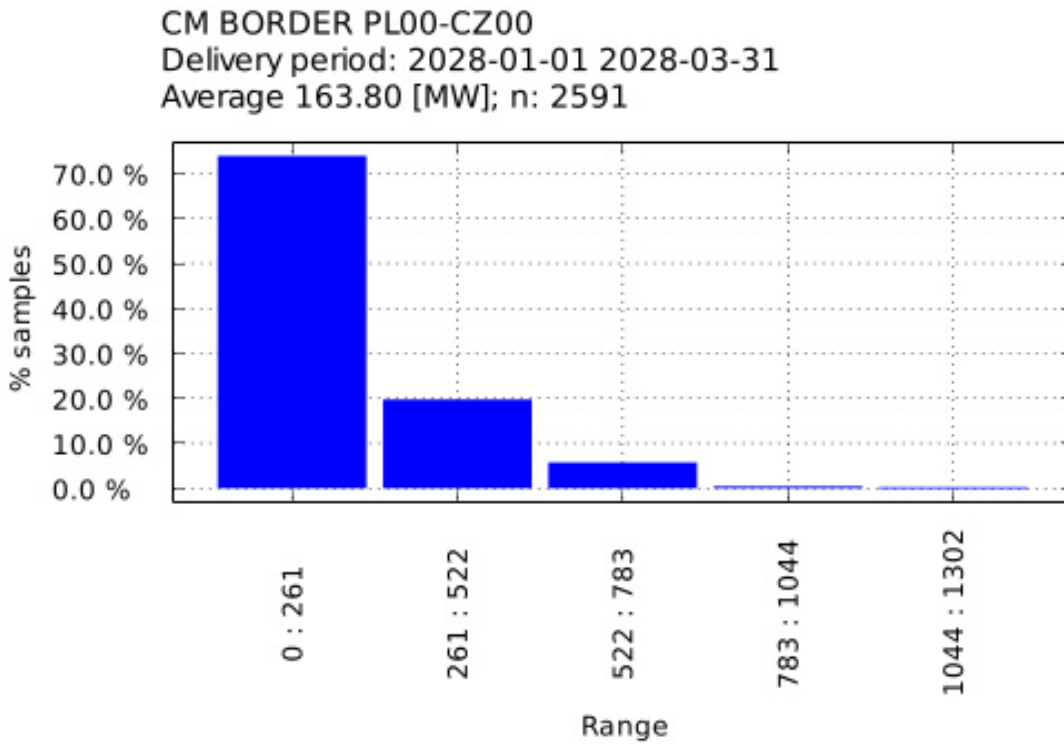


Figure 3 Contribution Chart for PL00-SK00, delivery period 01.01.2028-31.03.2028

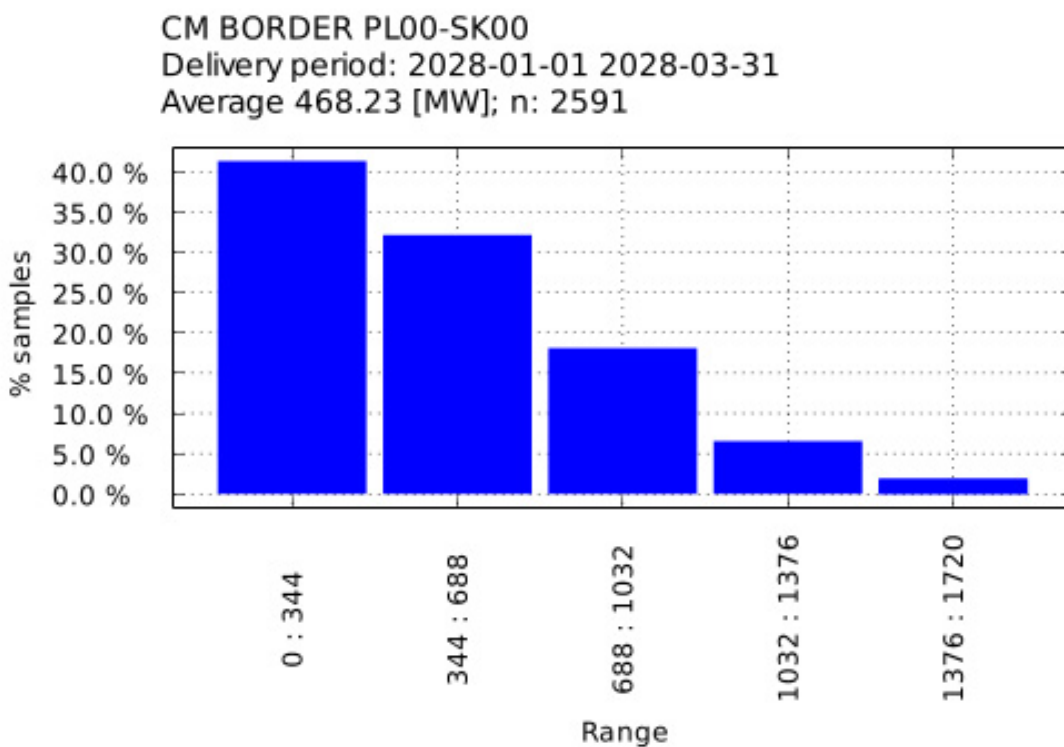


Figure 4 Contribution Chart for PL00-SE04, delivery period 01.01.2028-31.03.2028

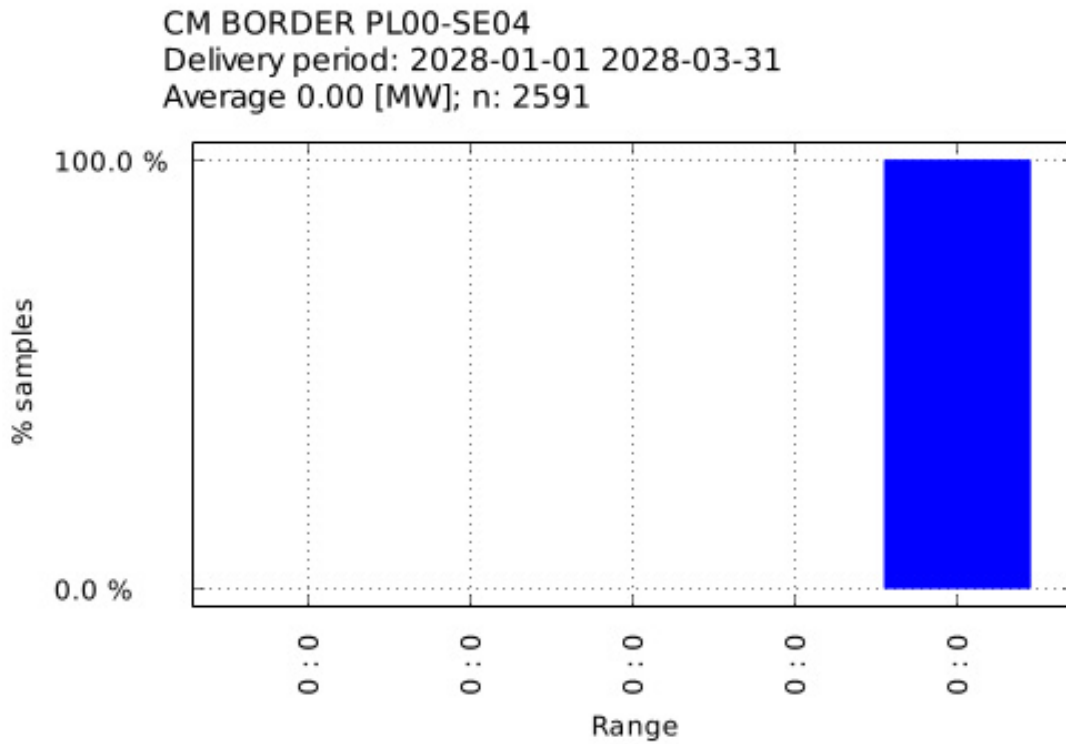


Figure 5 Contribution Chart for PL00-LT00, delivery period 01.01.2028-31.03.2028

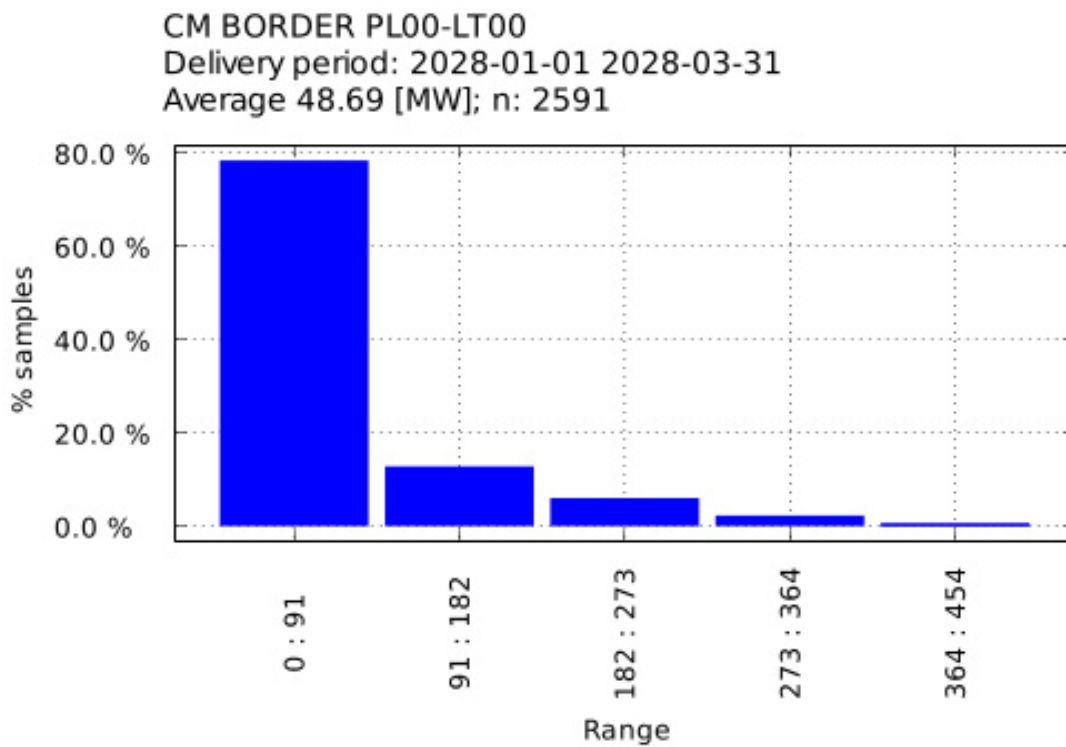


Figure 6 Contribution Chart for PL00-DE00, delivery period 01.01.2028-31.03.2028

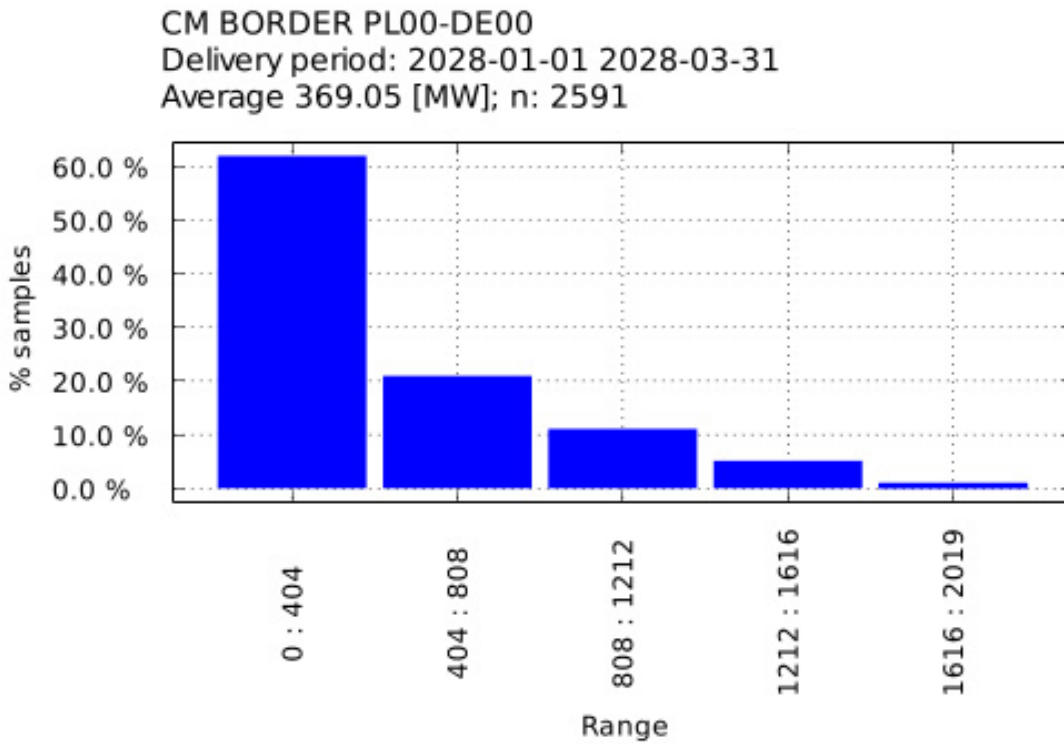


Figure 7 Contribution Chart for PL00-SE01, delivery period 01.01.2028-31.03.2028

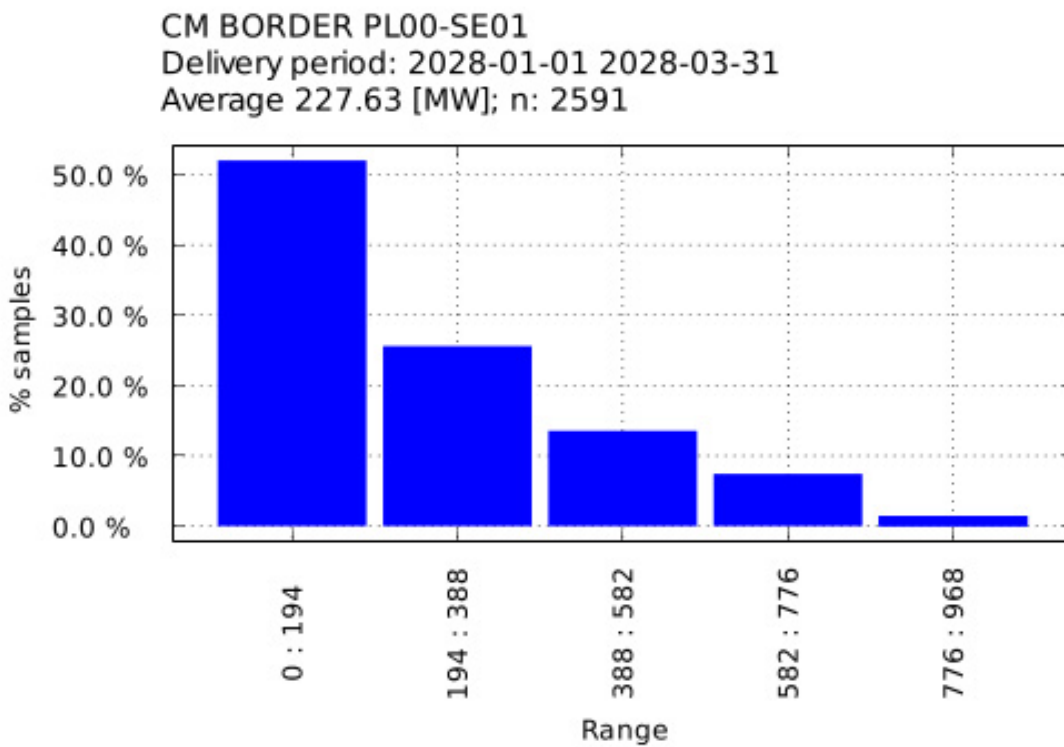
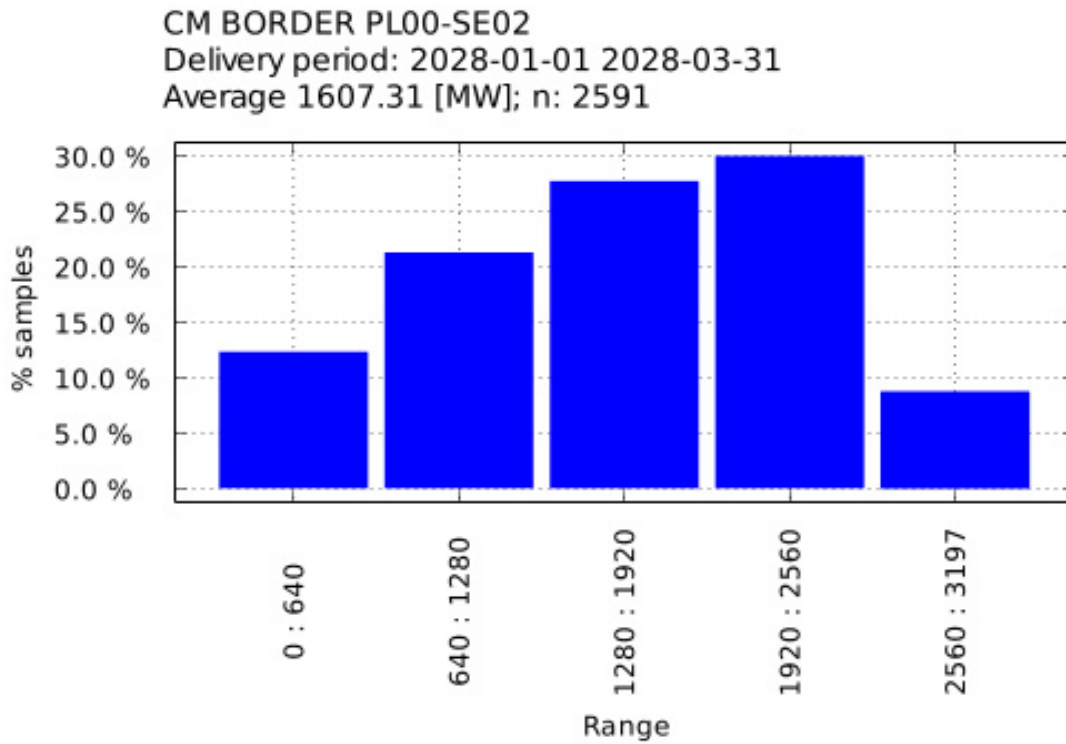


Figure 8 Contribution Chart for PL00-SE02, delivery period 01.01.2028-31.03.2028



3.1.2 Destination bidding zone(s)

Figure 9 ENS for PL00, delivery period 01.01.2028-31.03.2028

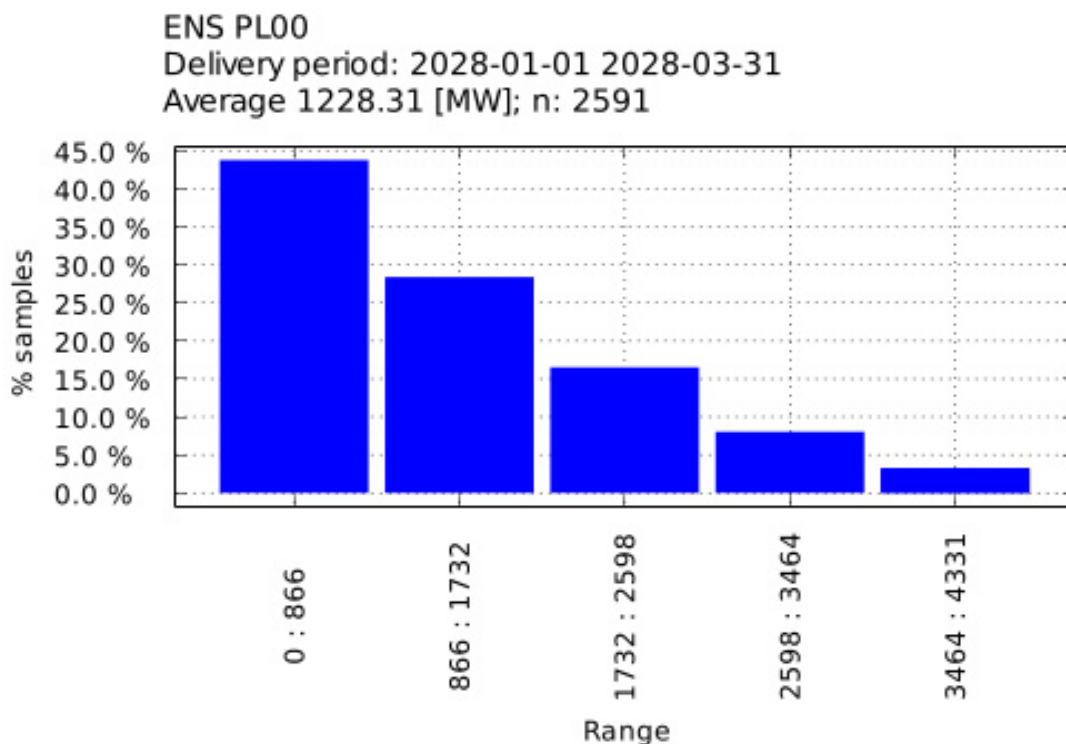


Figure 10 Margin With Import for PL00, delivery period 01.01.2028-31.03.2028

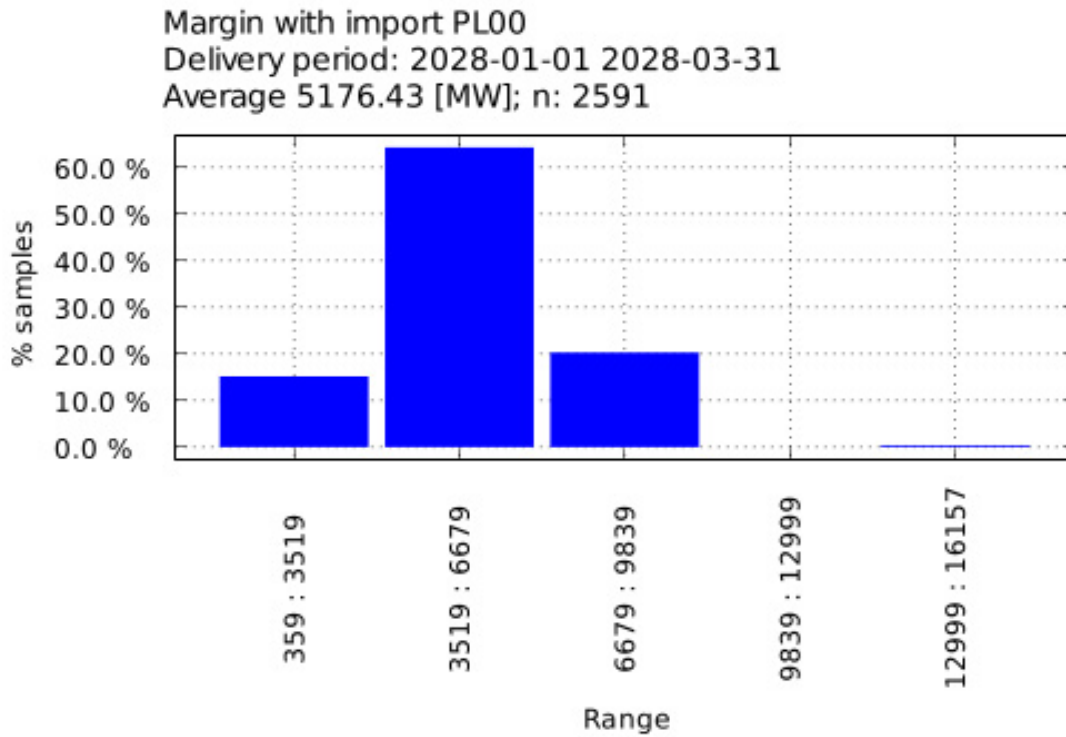


Figure 11 Margin Without Import for PL00, delivery period 01.01.2028-31.03.2028

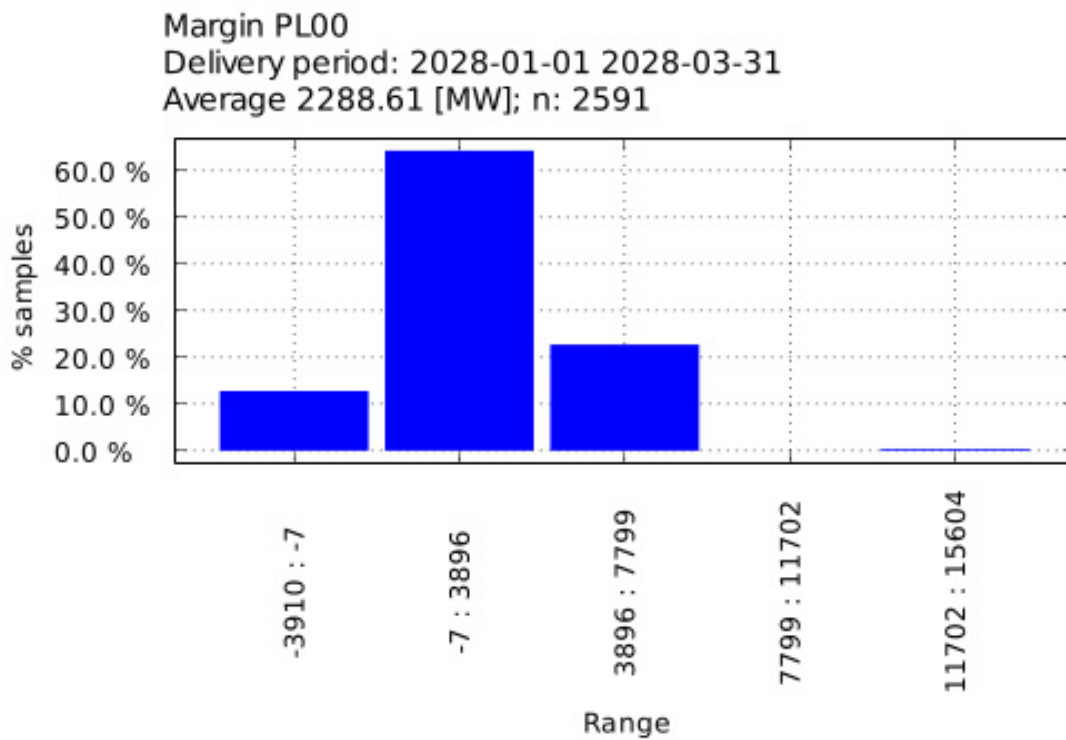
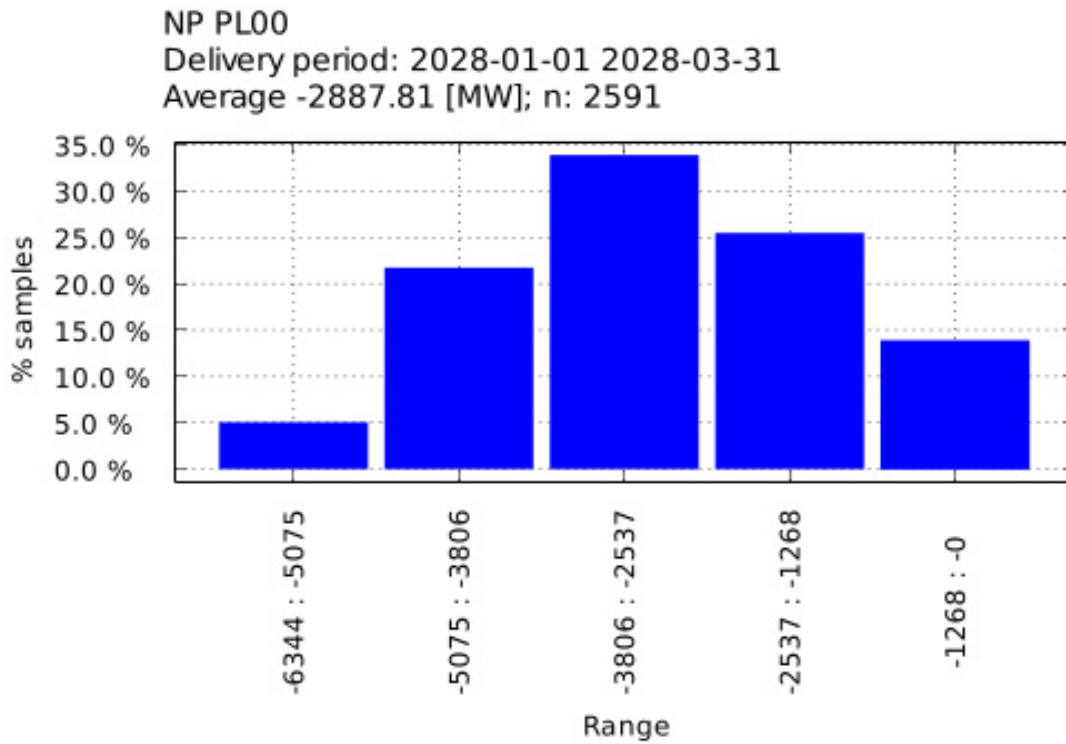


Figure 12 NP for PL00, delivery period 01.01.2028-31.03.2028



3.1.3 Origin bidding zone(s)

Figure 13 NP for CZ00, delivery period 01.01.2028-31.03.2028

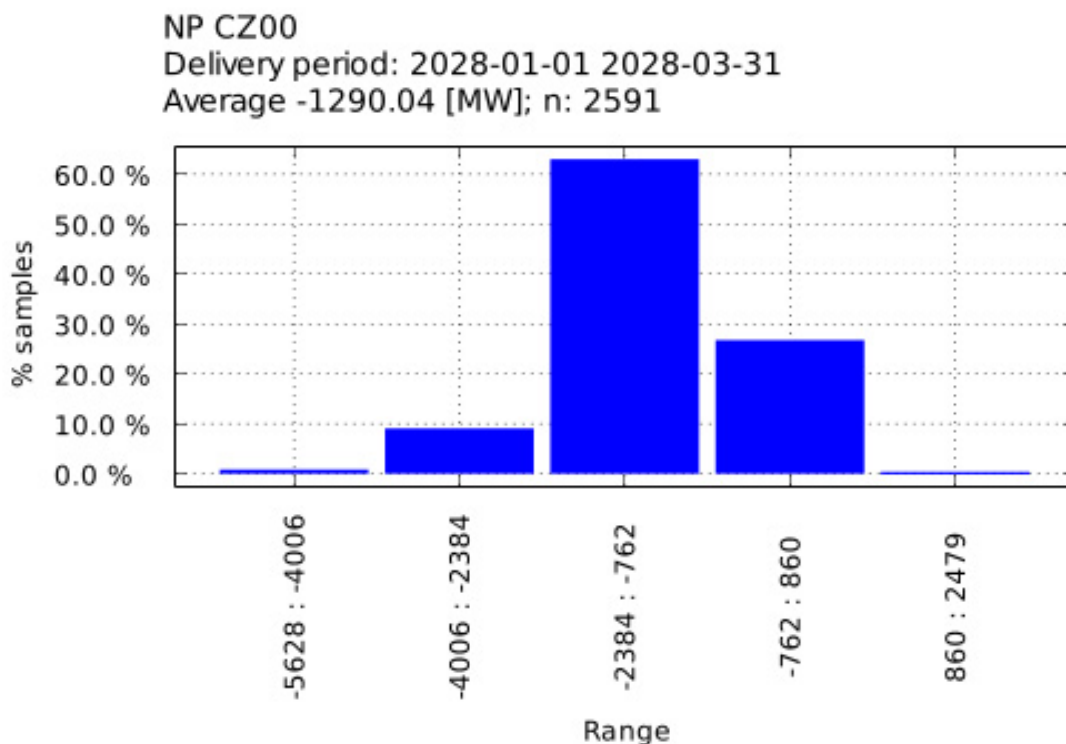


Figure 14 Margin Without Import for CZ00, delivery period 01.01.2028-31.03.2028

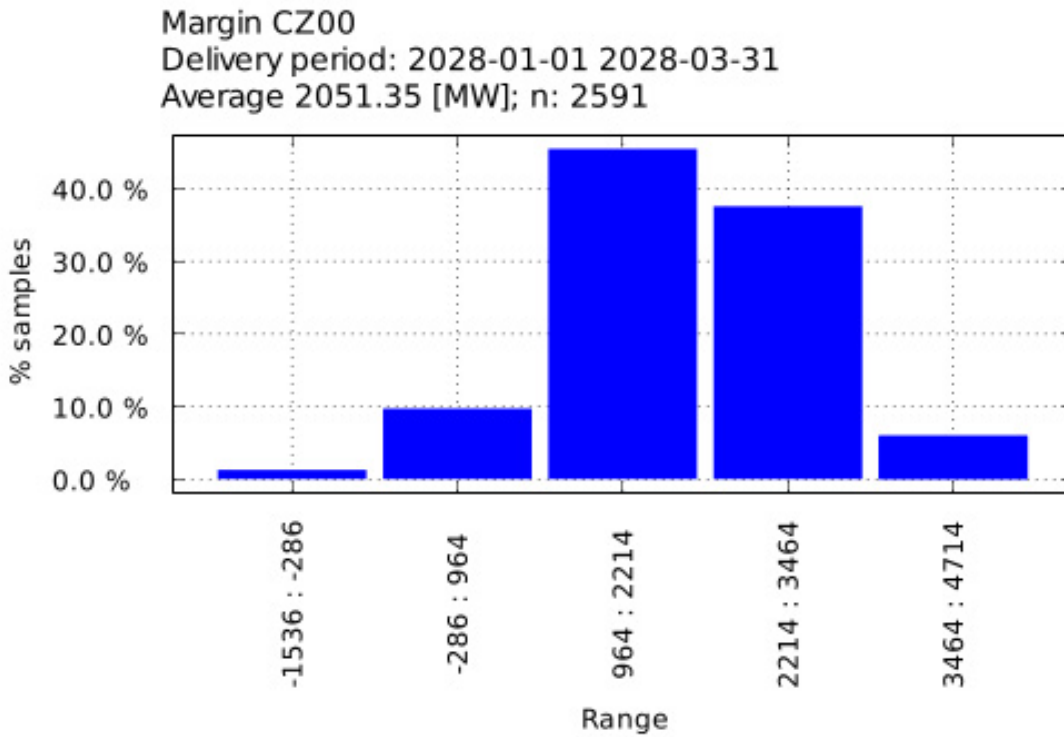


Figure 15 ENS for CZ00, delivery period 01.01.2028-31.03.2028

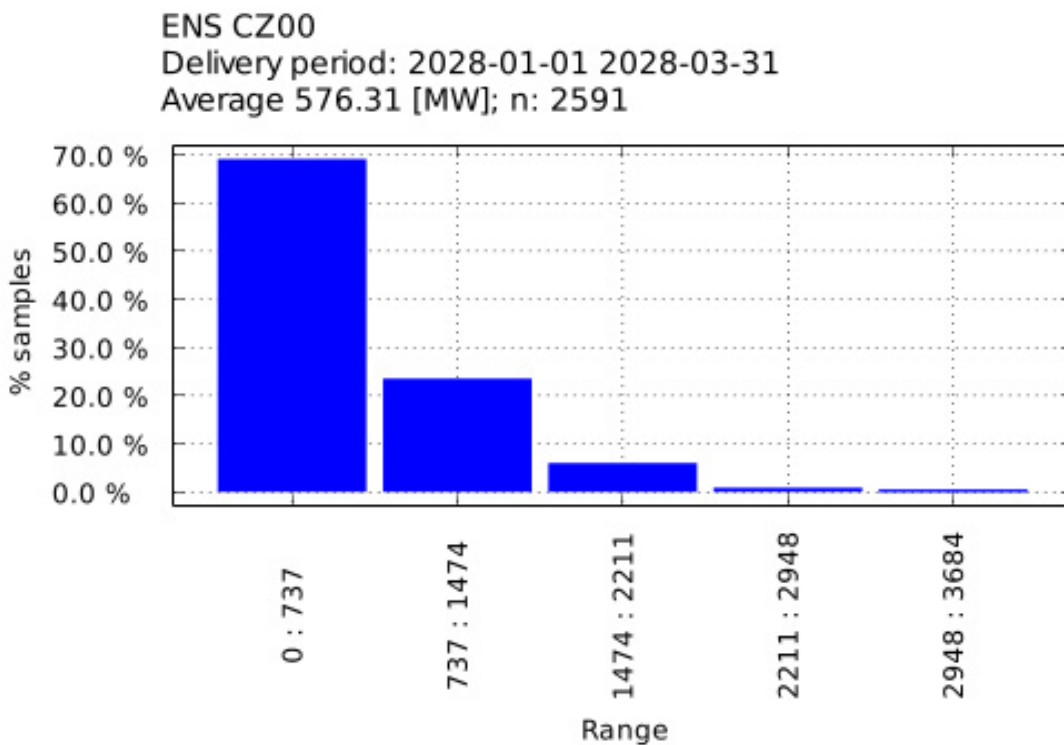


Figure 16 Margin With Import for CZ00, delivery period 01.01.2028-31.03.2028

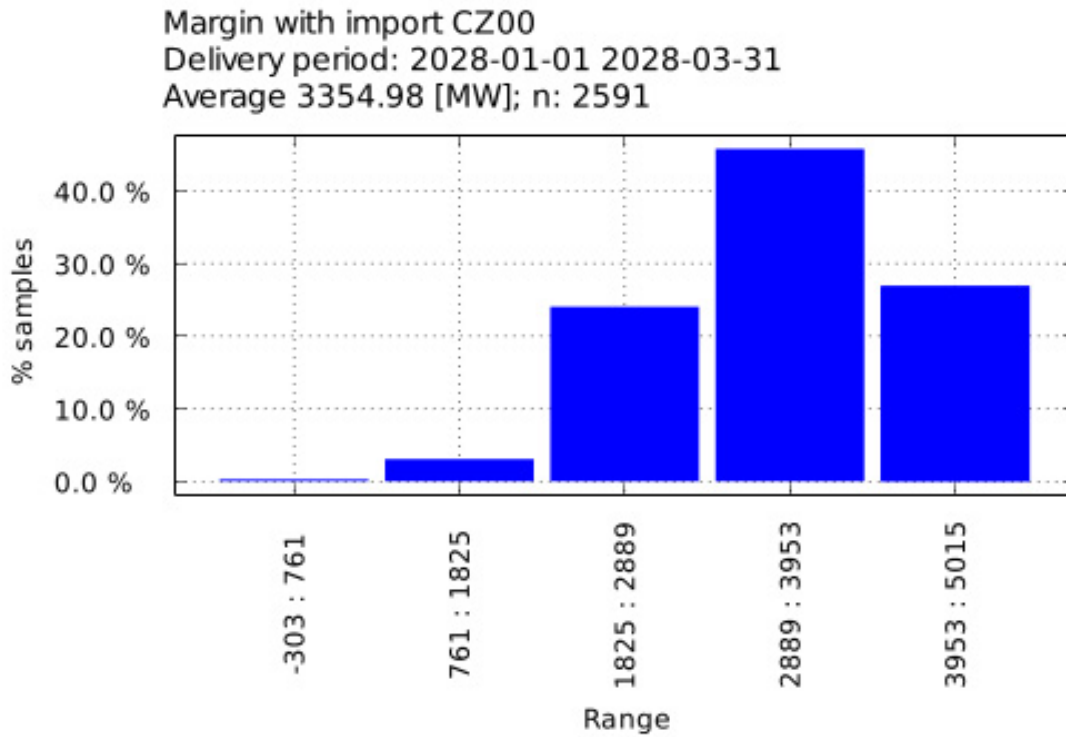


Figure 17 Margin Without Import for DE00, delivery period 01.01.2028-31.03.2028

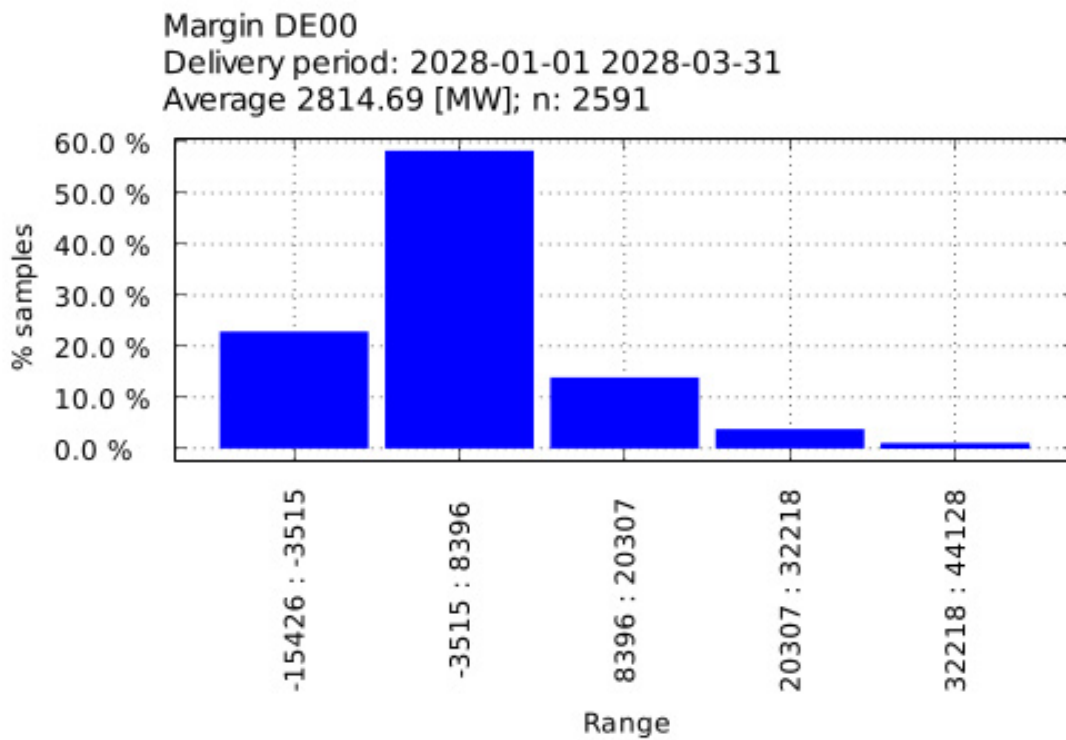


Figure 18 Margin With Import for DE00, delivery period 01.01.2028-31.03.2028

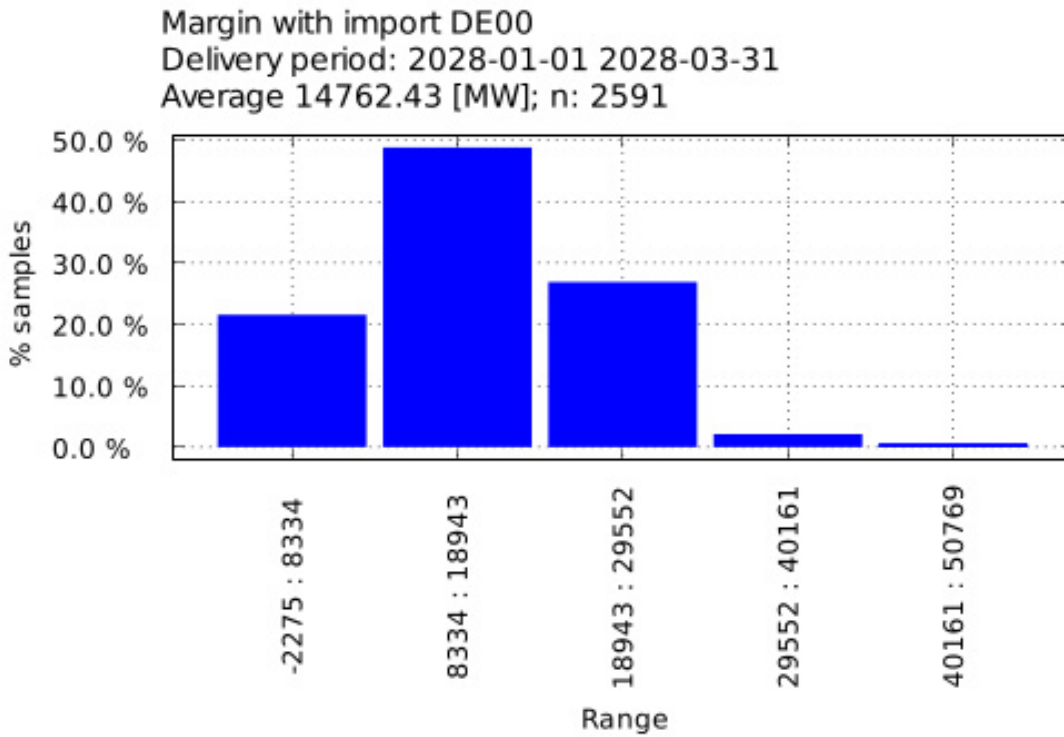


Figure 19 ENS for DE00, delivery period 01.01.2028-31.03.2028

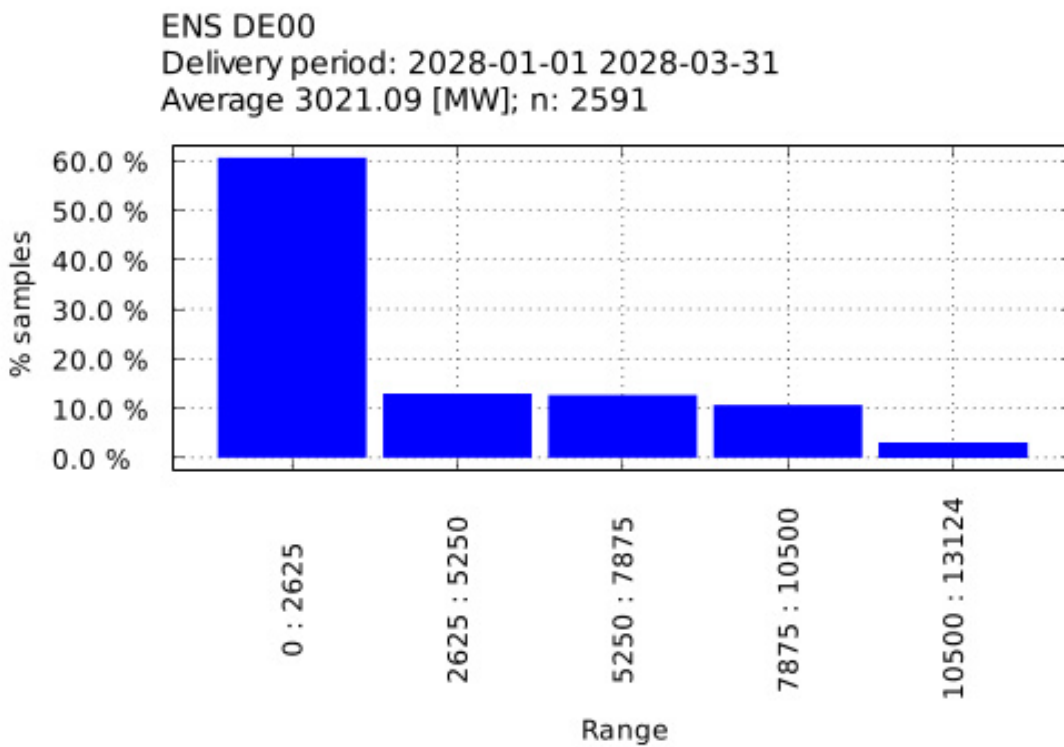


Figure 20 NP for DE00, delivery period 01.01.2028-31.03.2028

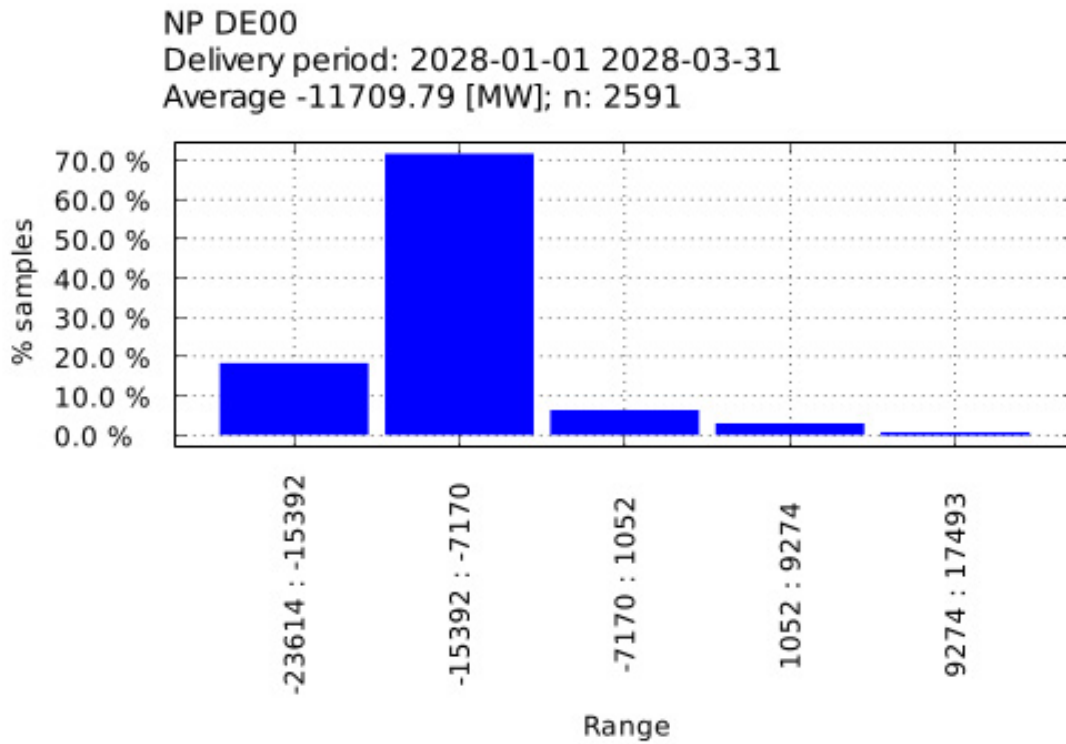


Figure 21 Margin With Import for LT00, delivery period 01.01.2028-31.03.2028

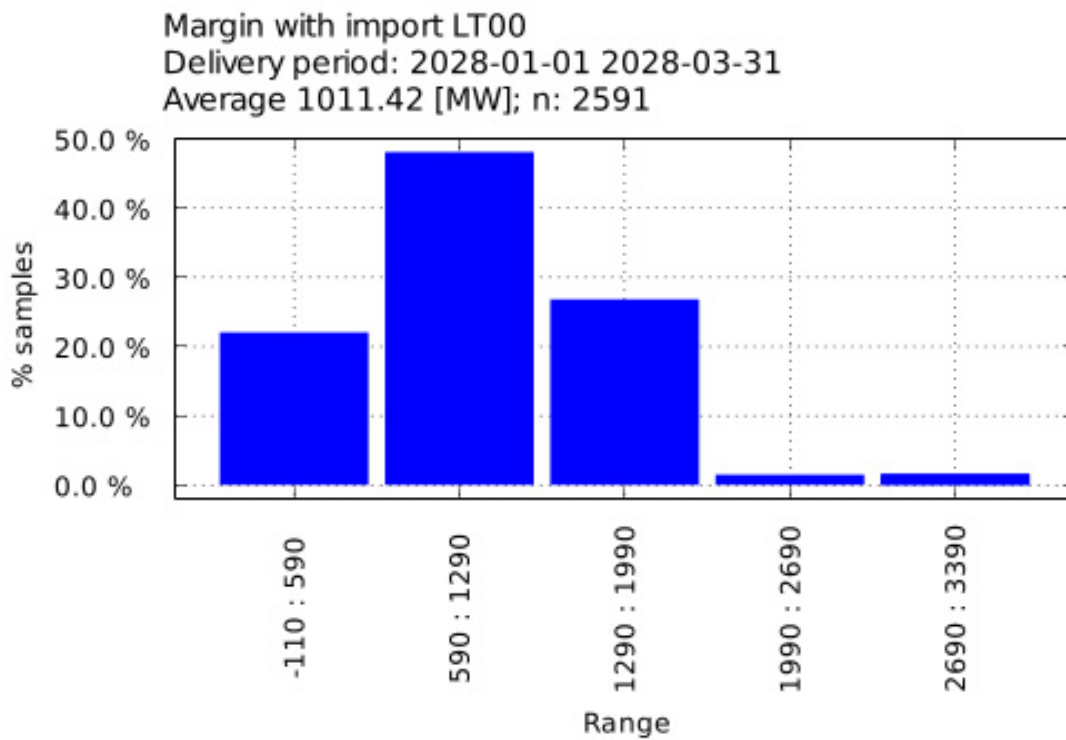


Figure 22 Margin Without Import for LT00, delivery period 01.01.2028-31.03.2028

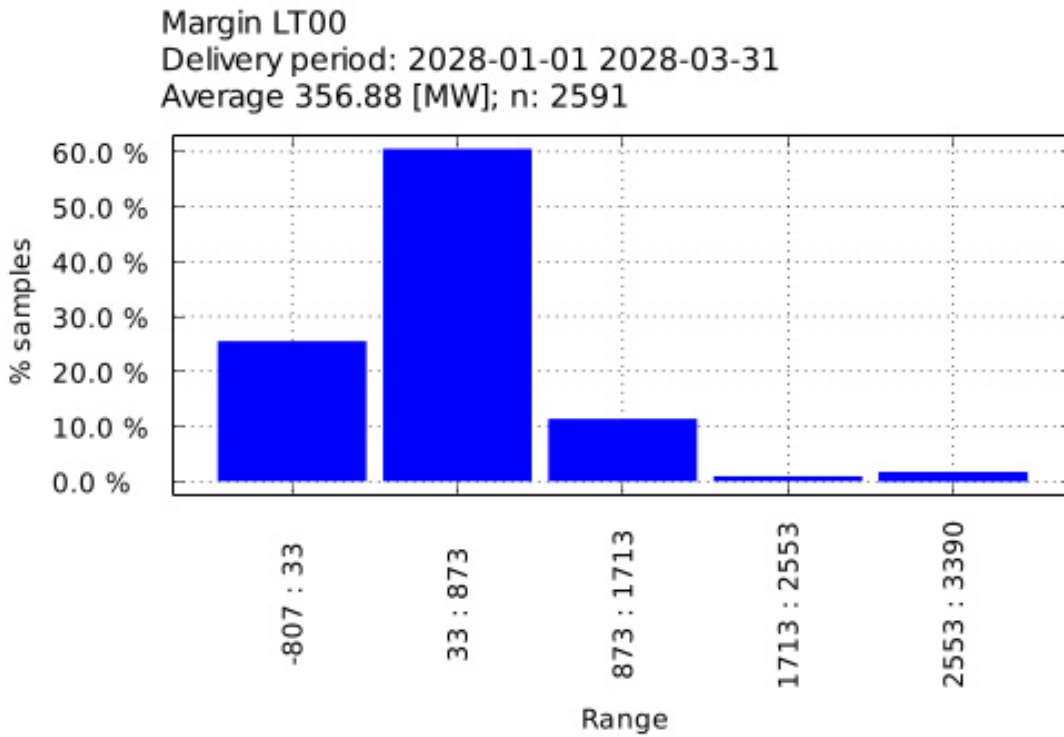


Figure 23 NP for LT00, delivery period 01.01.2028-31.03.2028

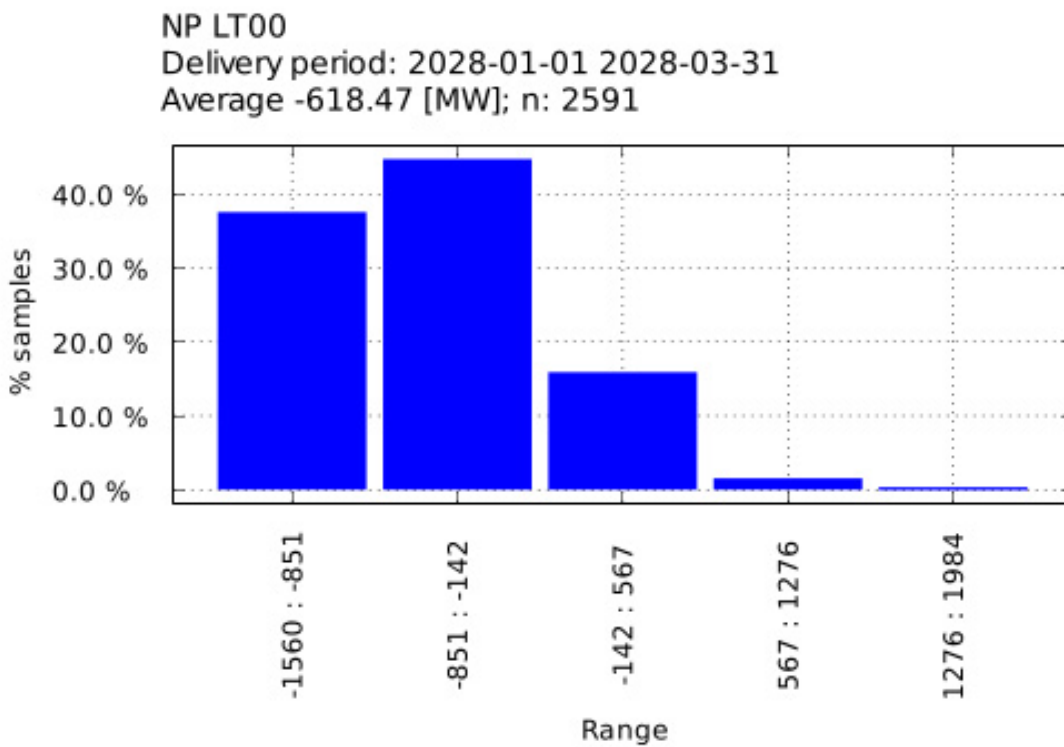


Figure 24 ENS for LT00, delivery period 01.01.2028-31.03.2028

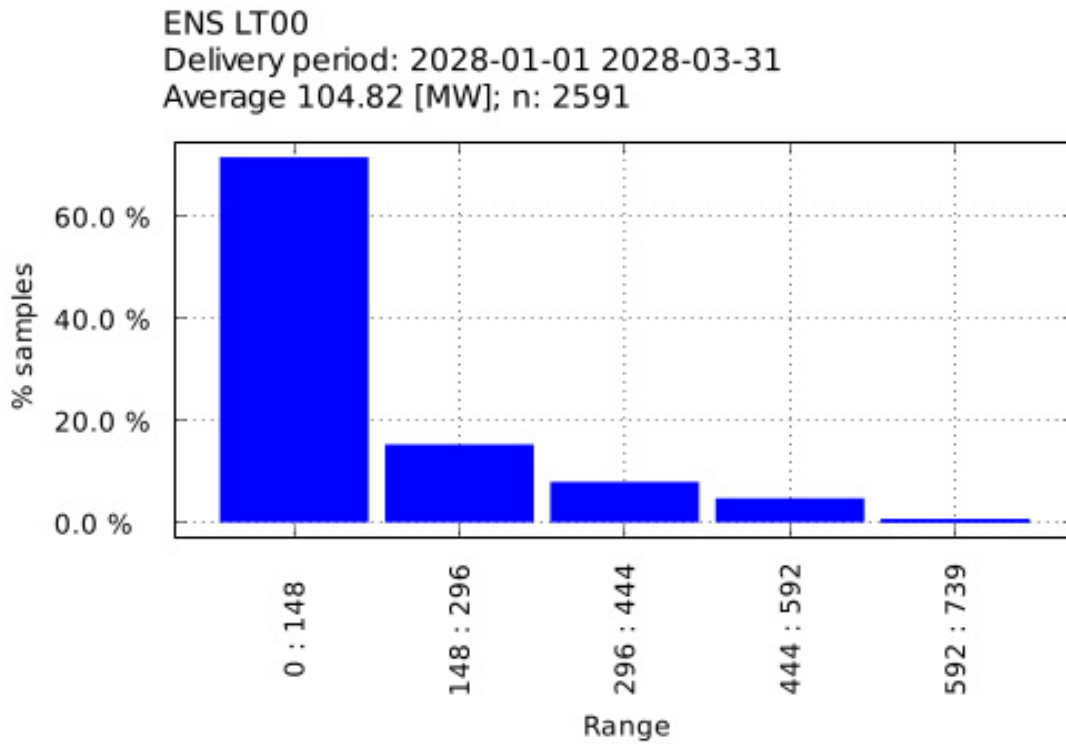


Figure 25 Margin Without Import for SE01, delivery period 01.01.2028-31.03.2028

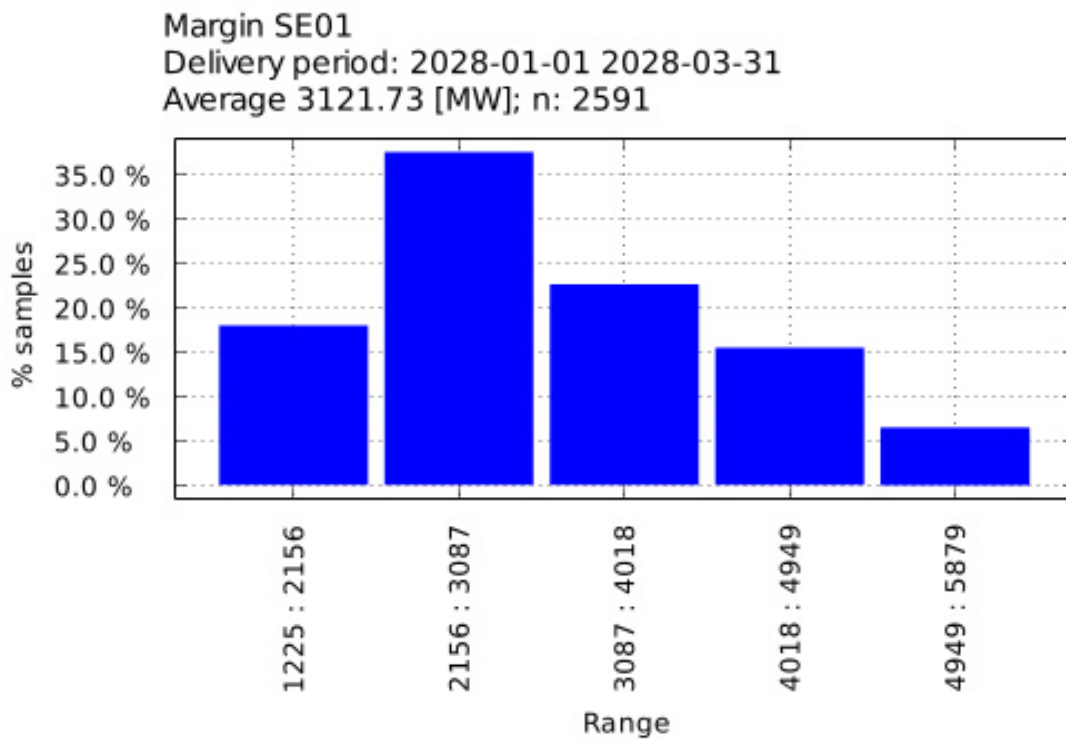


Figure 26 Margin With Import for SE01, delivery period 01.01.2028-31.03.2028

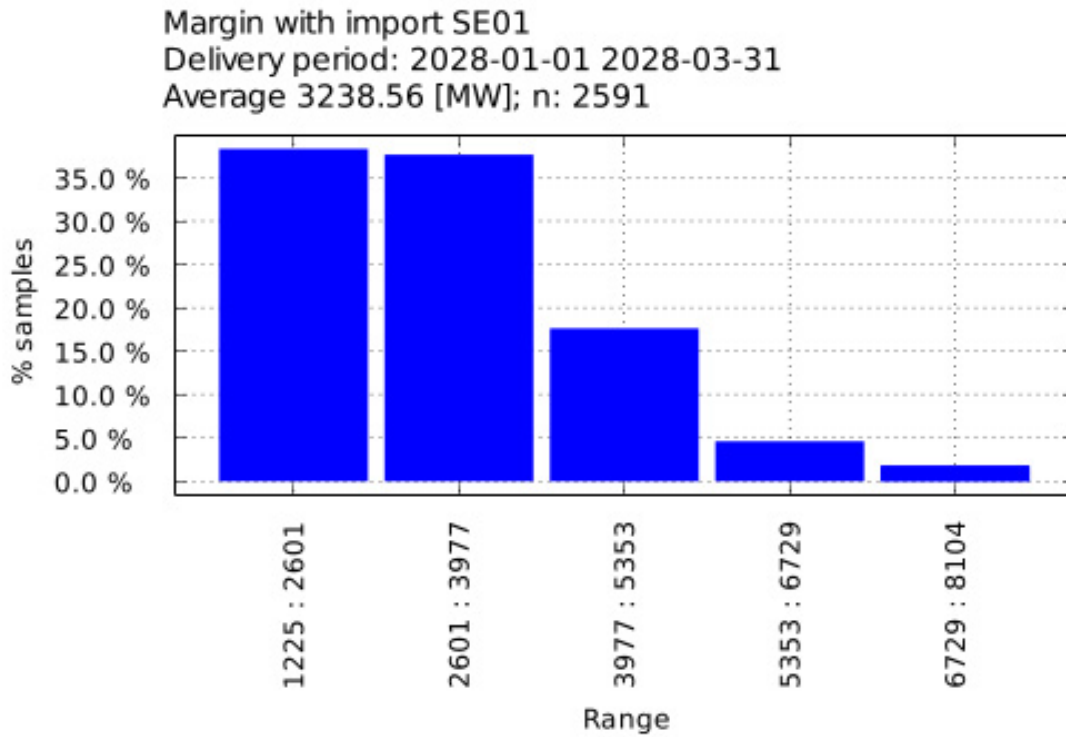


Figure 27 NP for SE01, delivery period 01.01.2028-31.03.2028

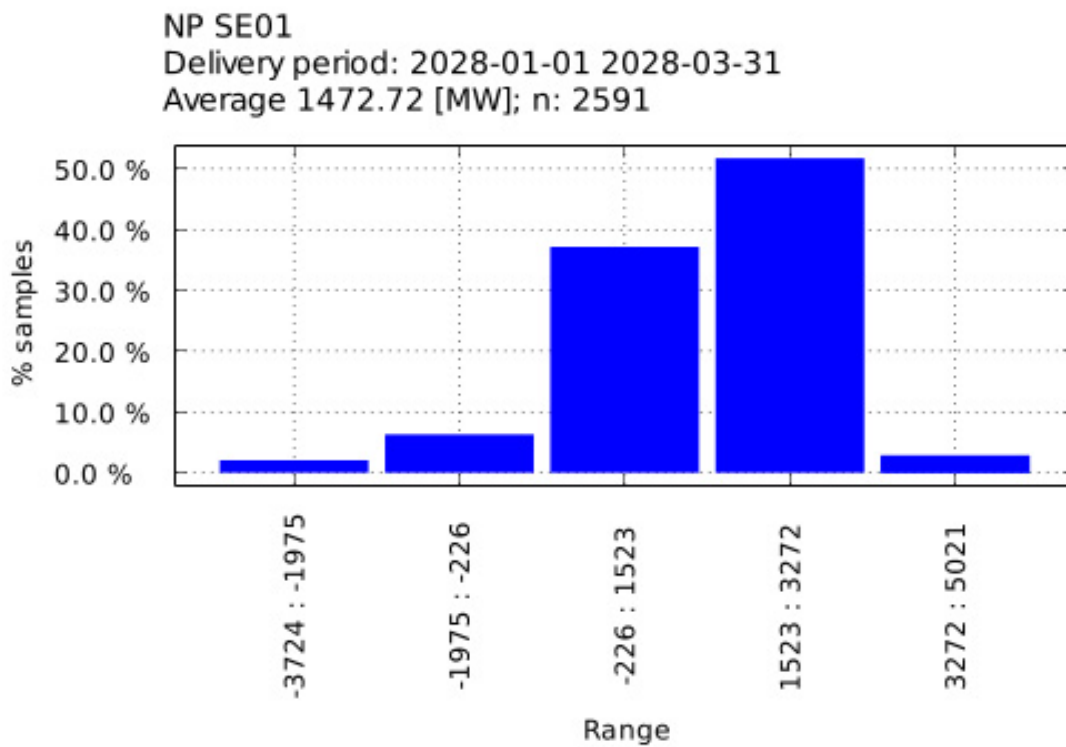


Figure 28 ENS for SE01, delivery period 01.01.2028-31.03.2028

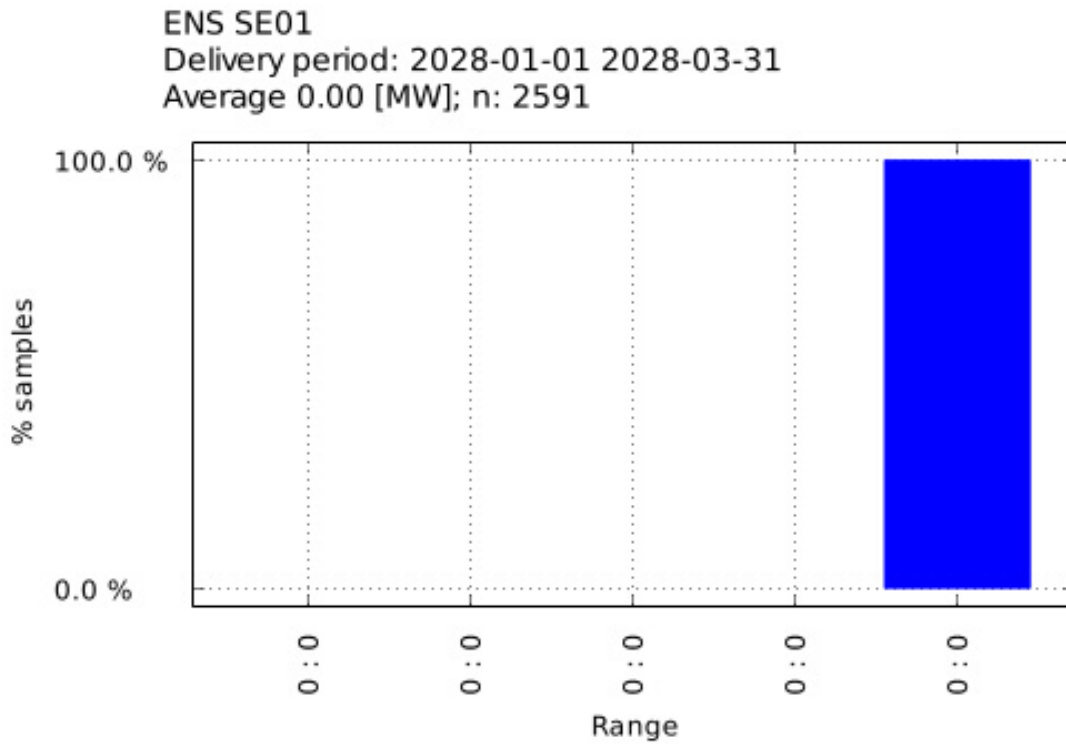


Figure 29 ENS for SE02, delivery period 01.01.2028-31.03.2028

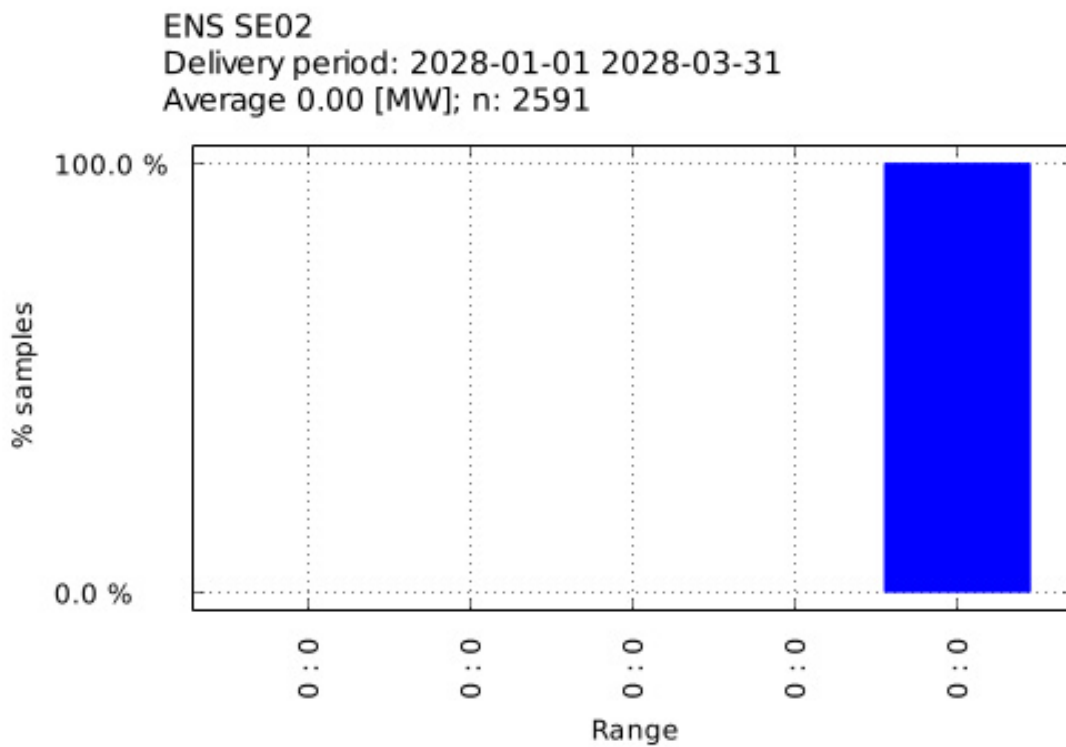


Figure 30 Margin Without Import for SE02, delivery period 01.01.2028-31.03.2028

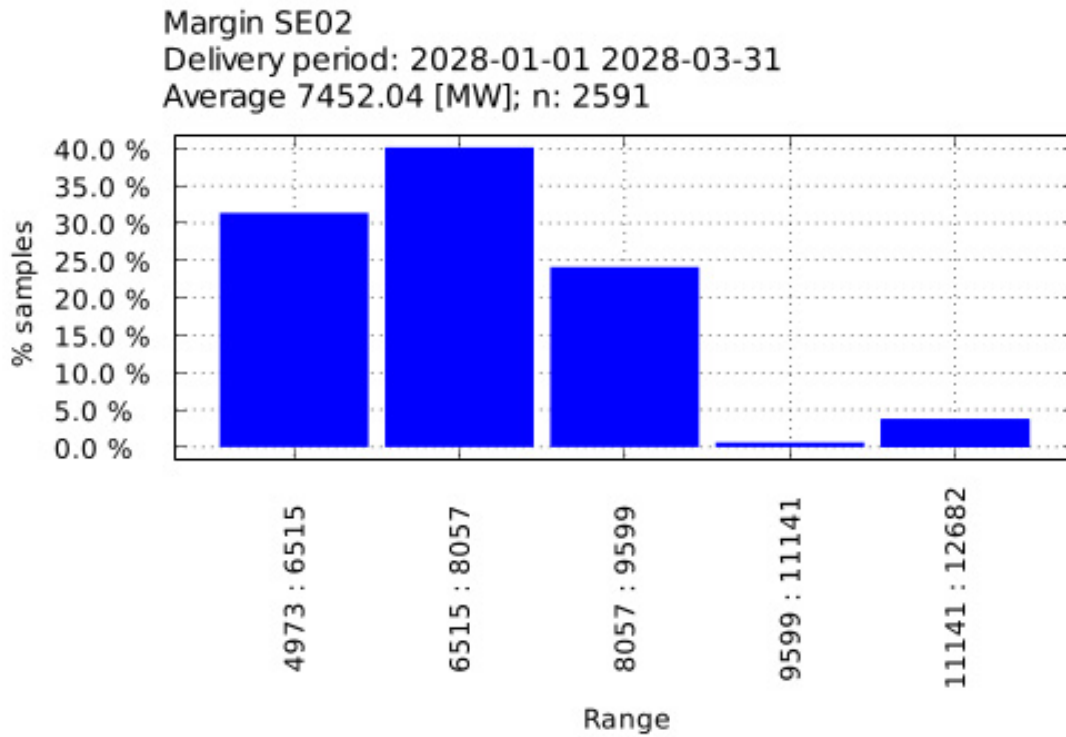


Figure 31 NP for SE02, delivery period 01.01.2028-31.03.2028

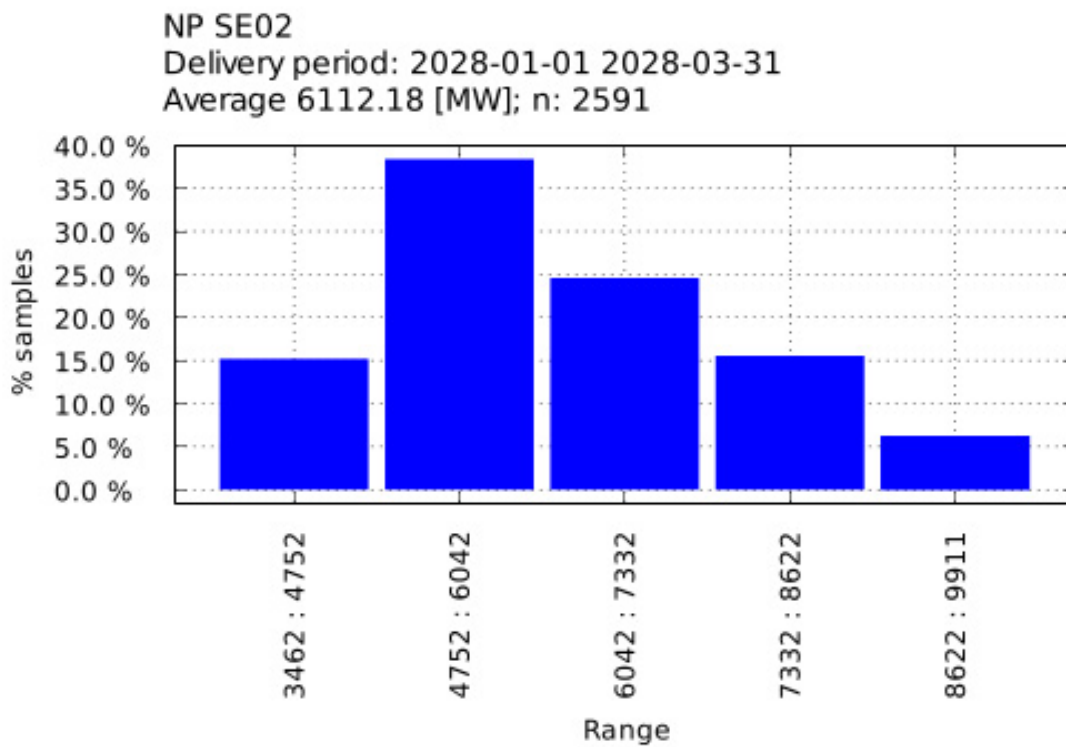


Figure 32 Margin With Import for SE02, delivery period 01.01.2028-31.03.2028

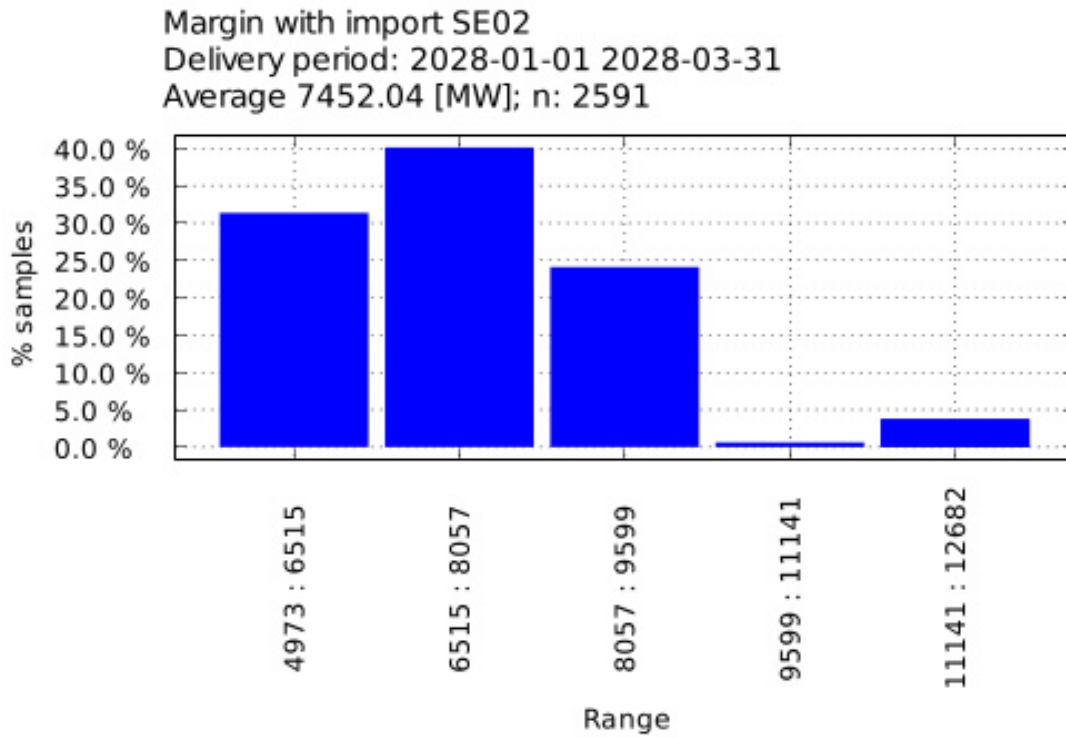


Figure 33 NP for SE03, delivery period 01.01.2028-31.03.2028

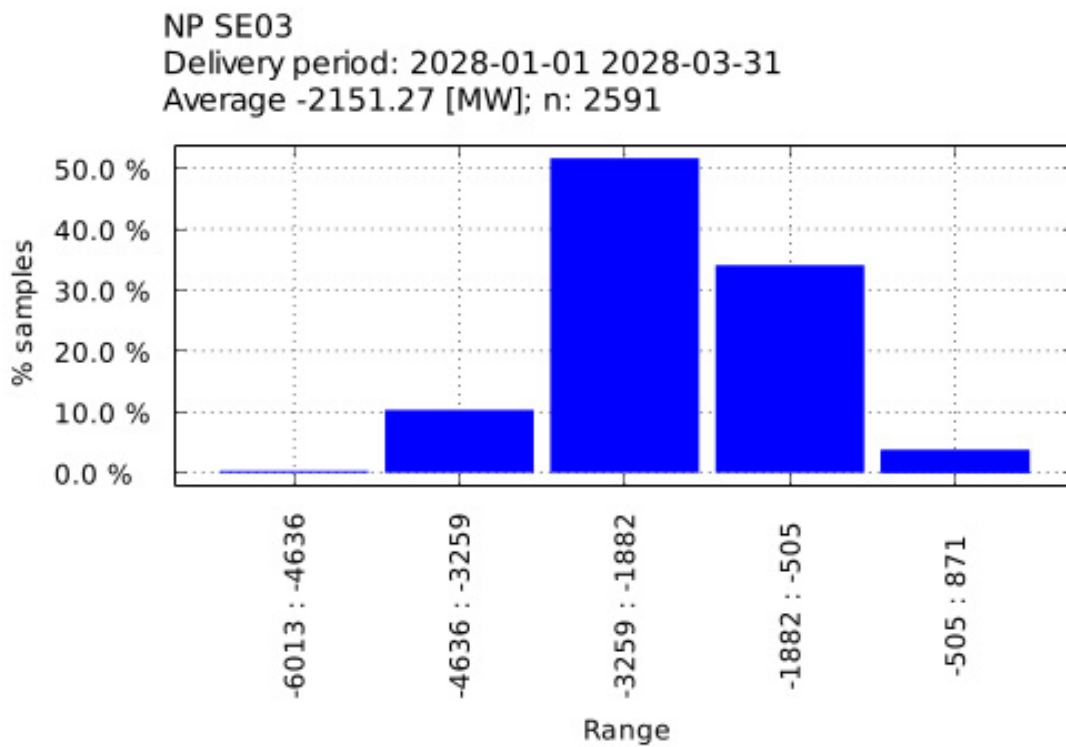


Figure 34 Margin Without Import for SE03, delivery period 01.01.2028-31.03.2028

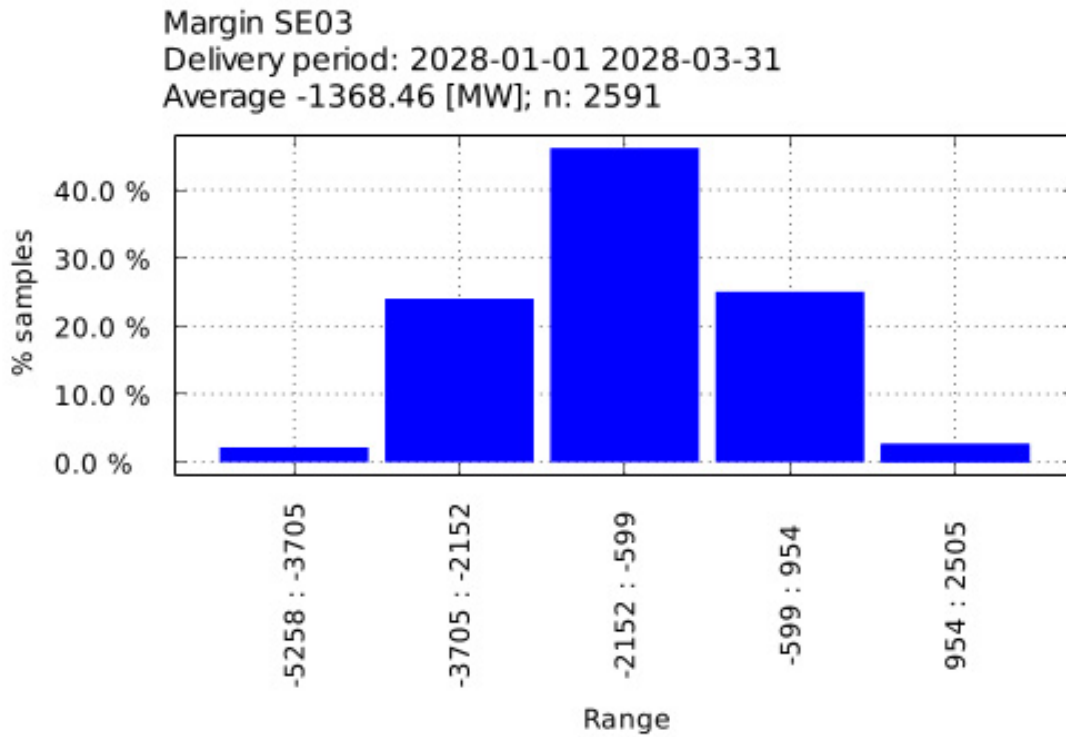


Figure 35 Margin With Import for SE03, delivery period 01.01.2028-31.03.2028

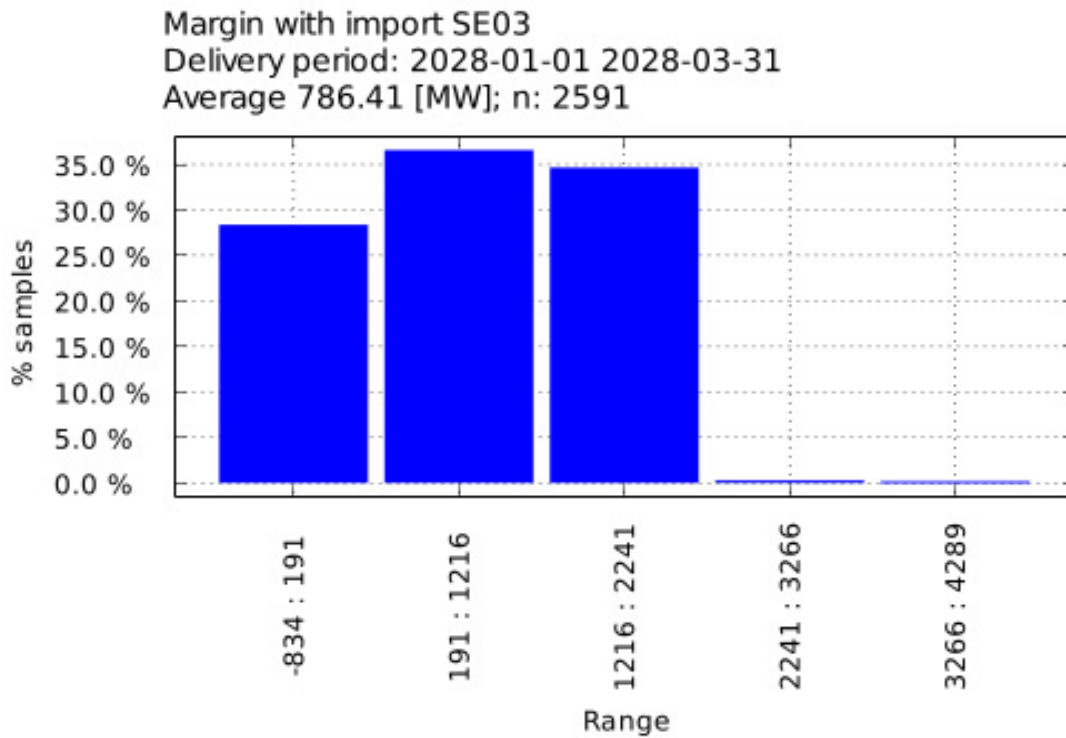


Figure 36 ENS for SE03, delivery period 01.01.2028-31.03.2028

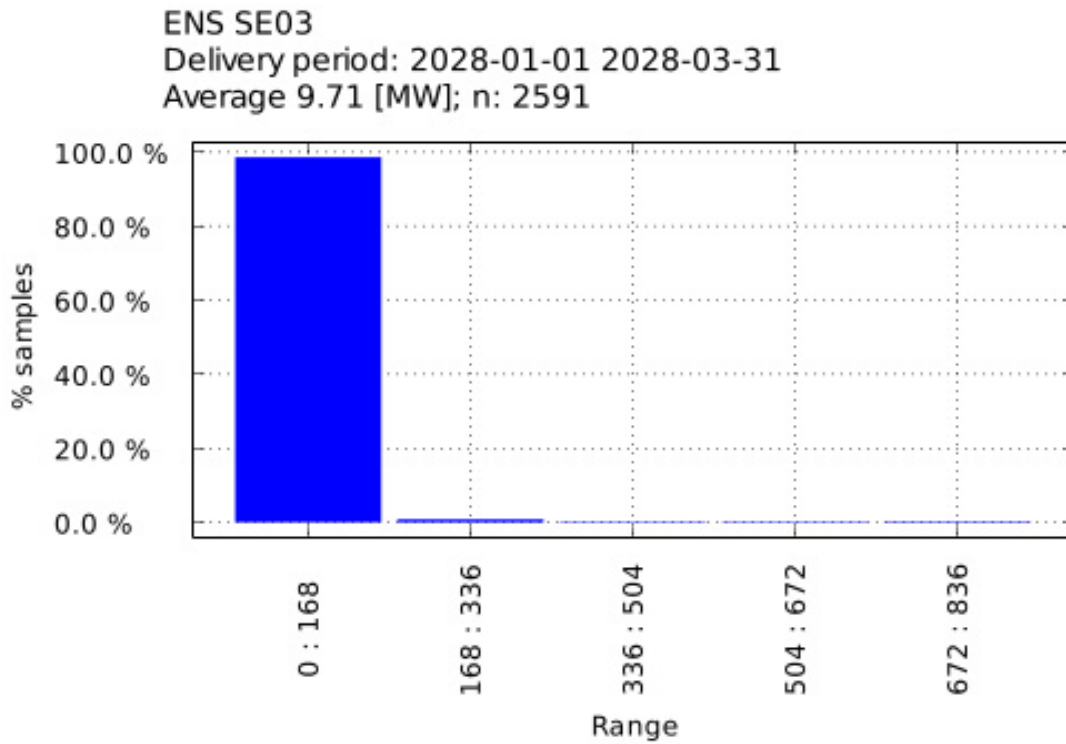


Figure 37 NP for SE04, delivery period 01.01.2028-31.03.2028

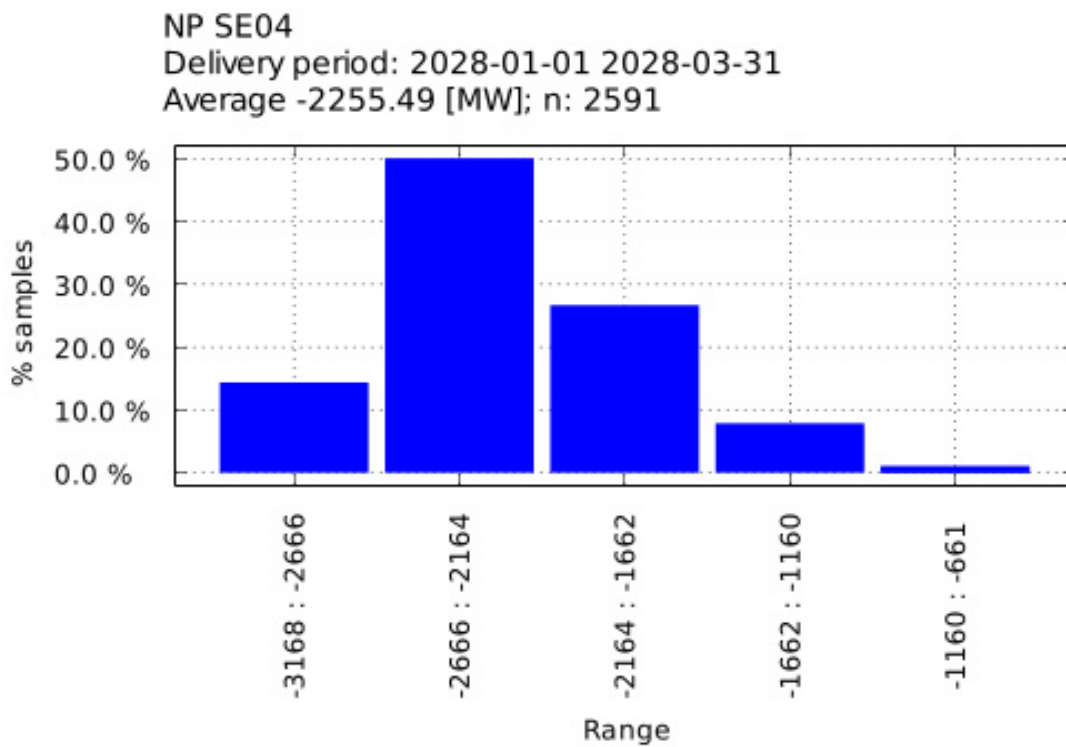


Figure 38 Margin Without Import for SE04, delivery period 01.01.2028-31.03.2028

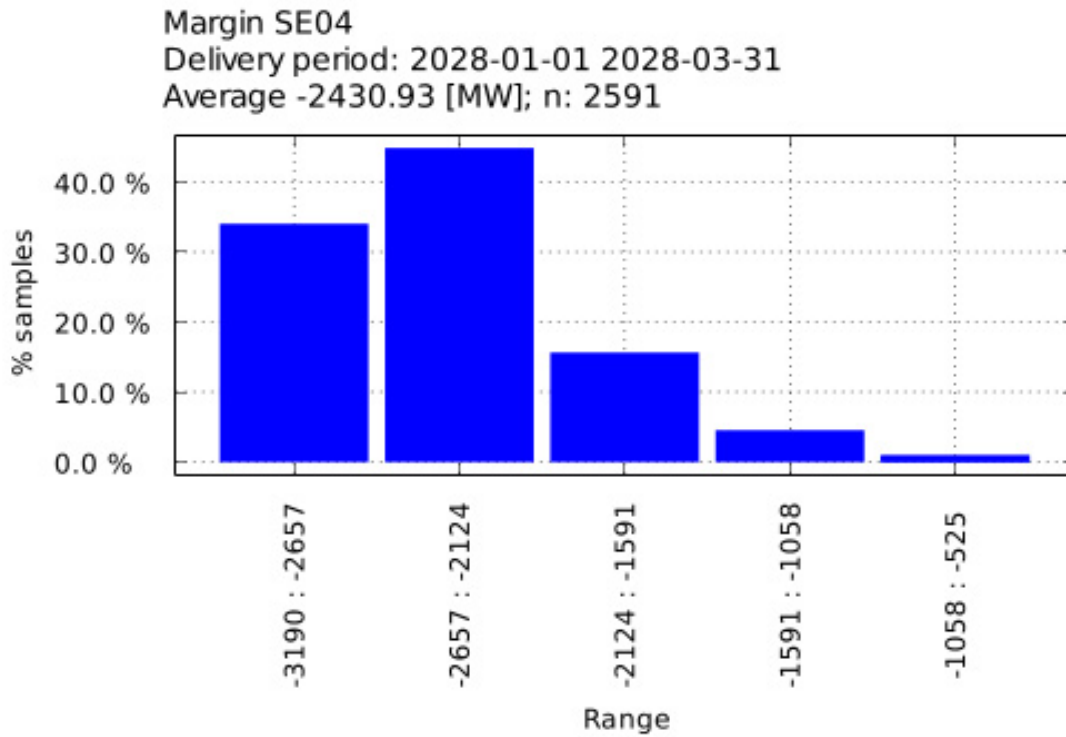


Figure 39 Margin With Import for SE04, delivery period 01.01.2028-31.03.2028

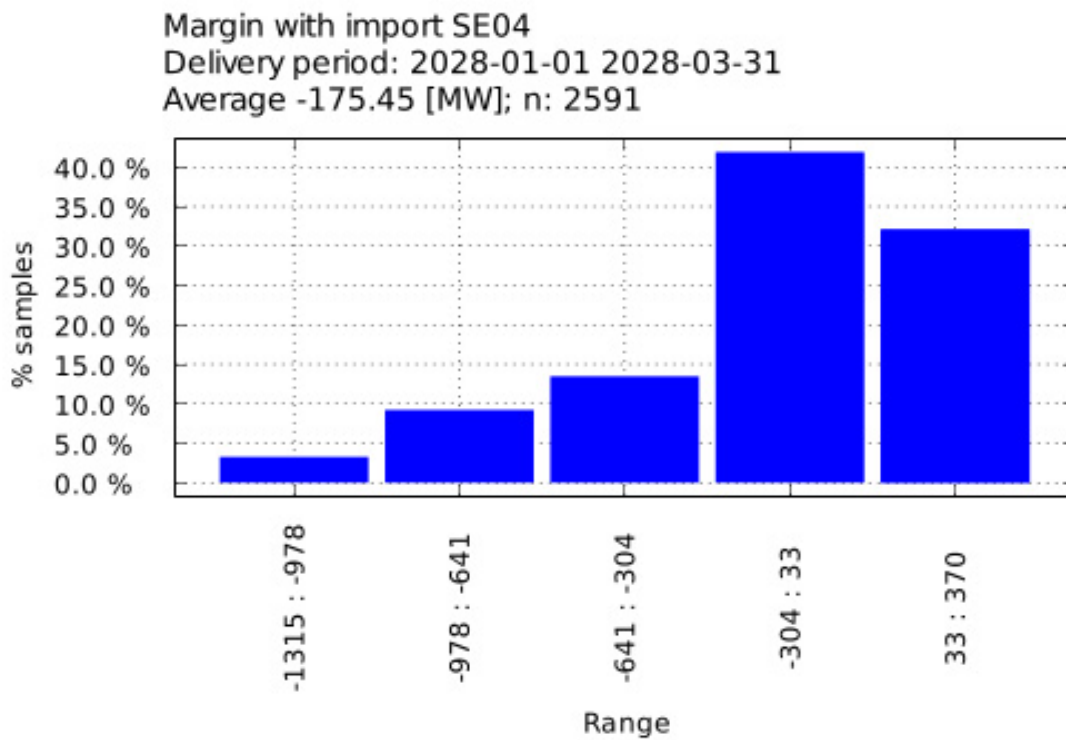


Figure 40 ENS for SE04, delivery period 01.01.2028-31.03.2028

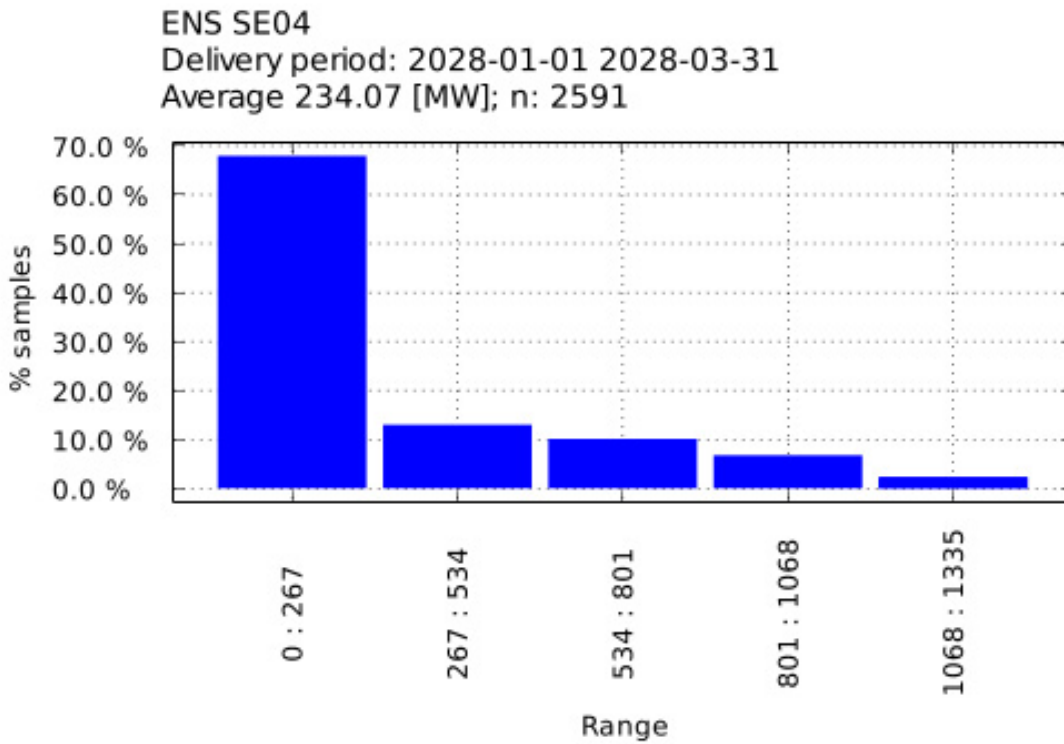


Figure 41 ENS for SK00, delivery period 01.01.2028-31.03.2028

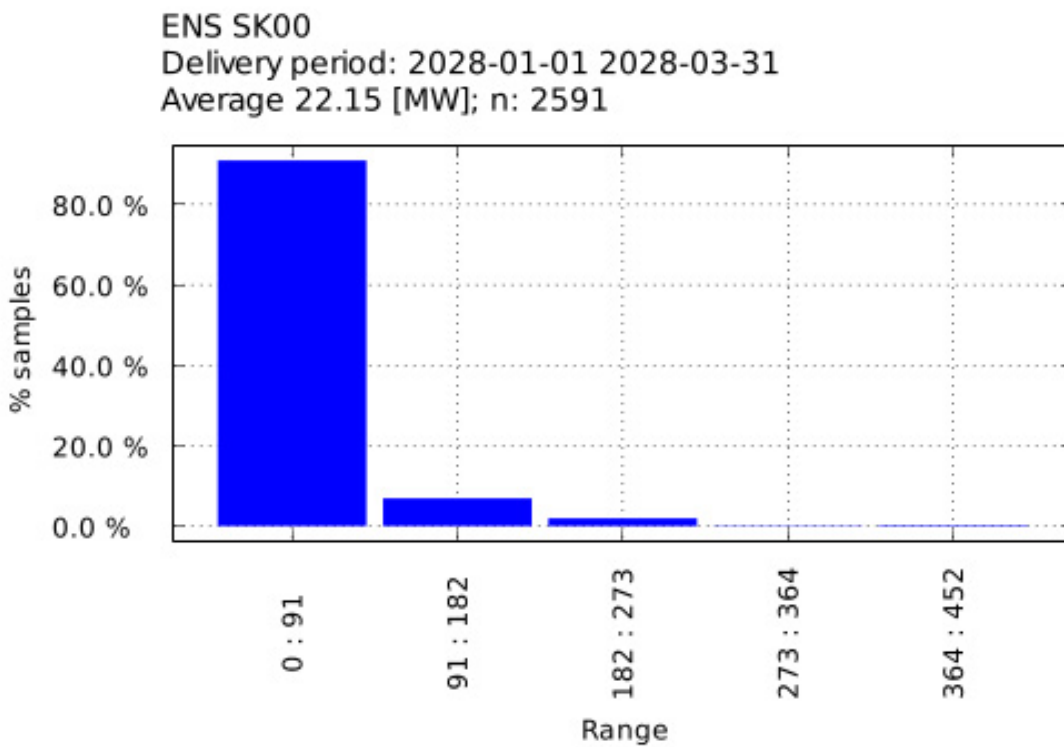


Figure 42 Margin Without Import for SK00, delivery period 01.01.2028-31.03.2028

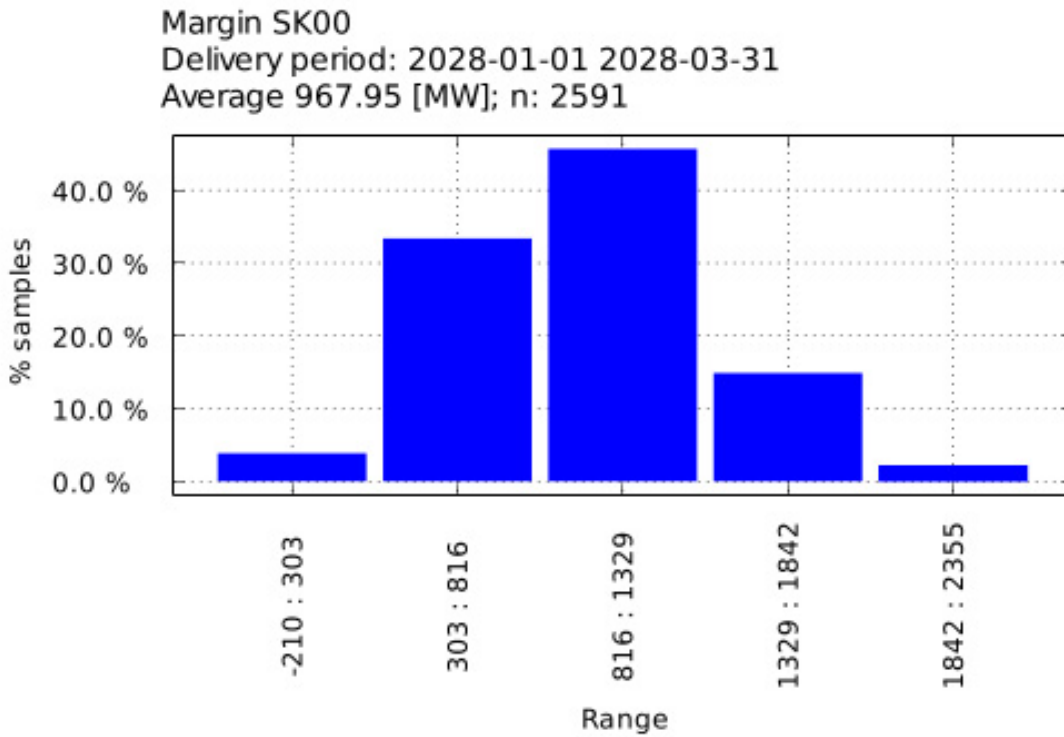


Figure 43 Margin With Import for SK00, delivery period 01.01.2028-31.03.2028

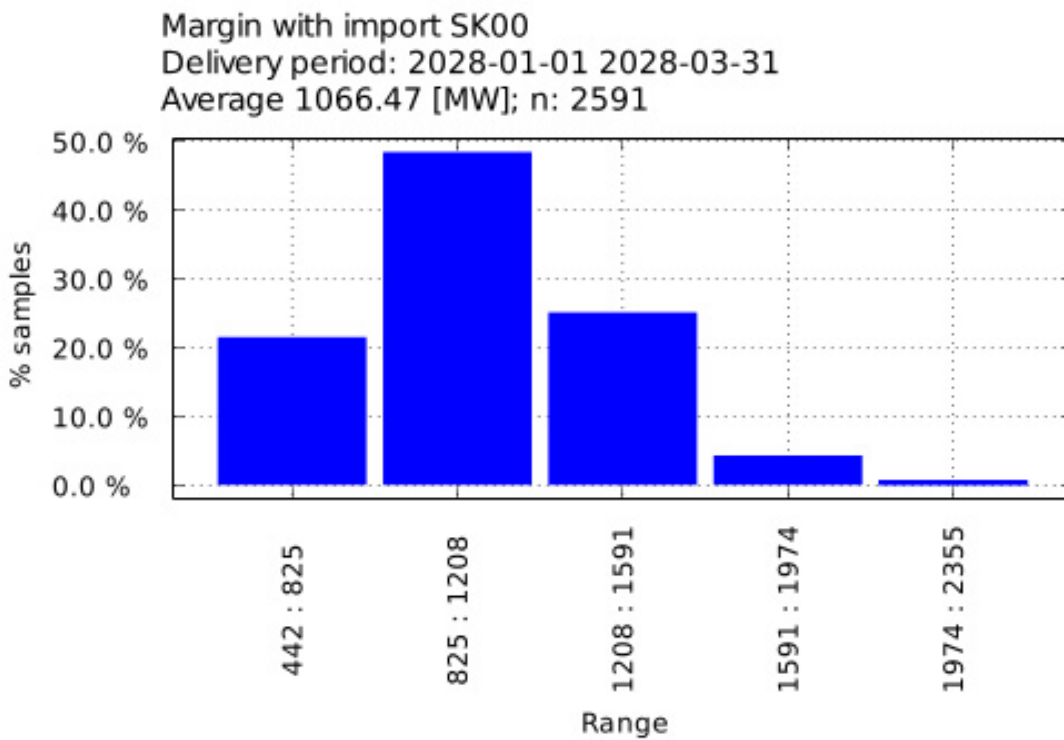
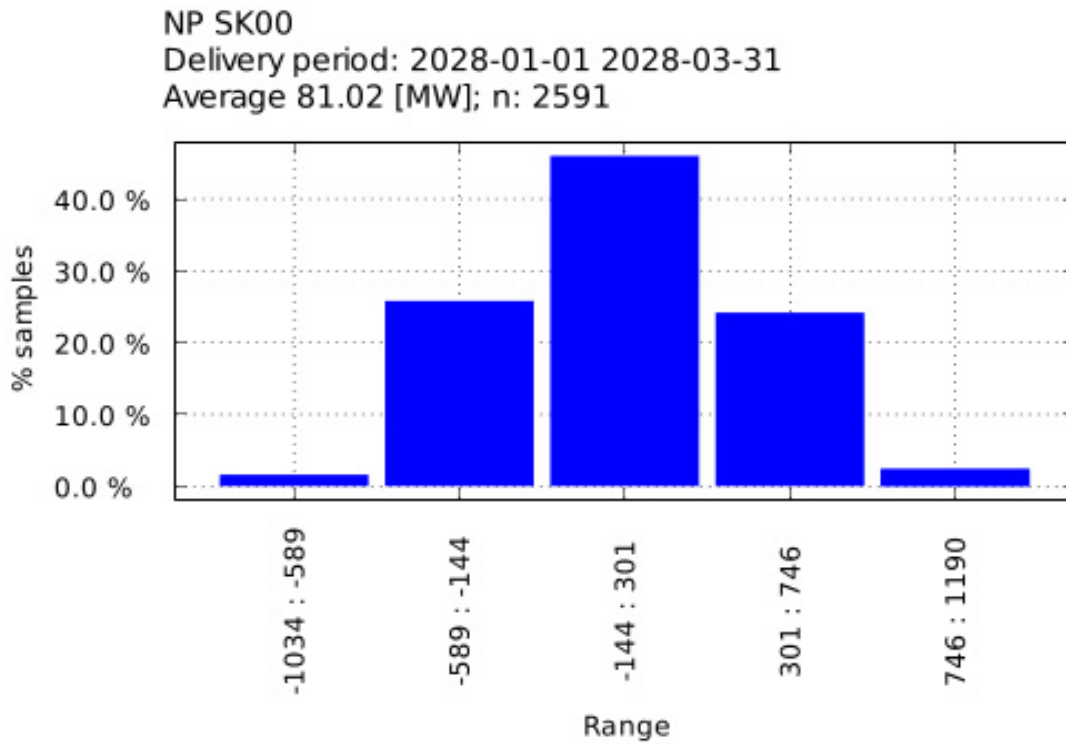


Figure 44 NP for SK00, delivery period 01.01.2028-31.03.2028



### 3.2 Delivery period 2028-04-01 - 2028-06-30

No MTUs found.

### 3.3 Delivery period 2028-07-01 - 2028-09-30

No MTUs found.

### 3.4 Delivery period 2028-10-01 - 2028-12-31

#### 3.4.1 Contributions to MEC

Figure 45 Contribution Chart for PL00-LT00, delivery period 01.10.2028-31.12.2028

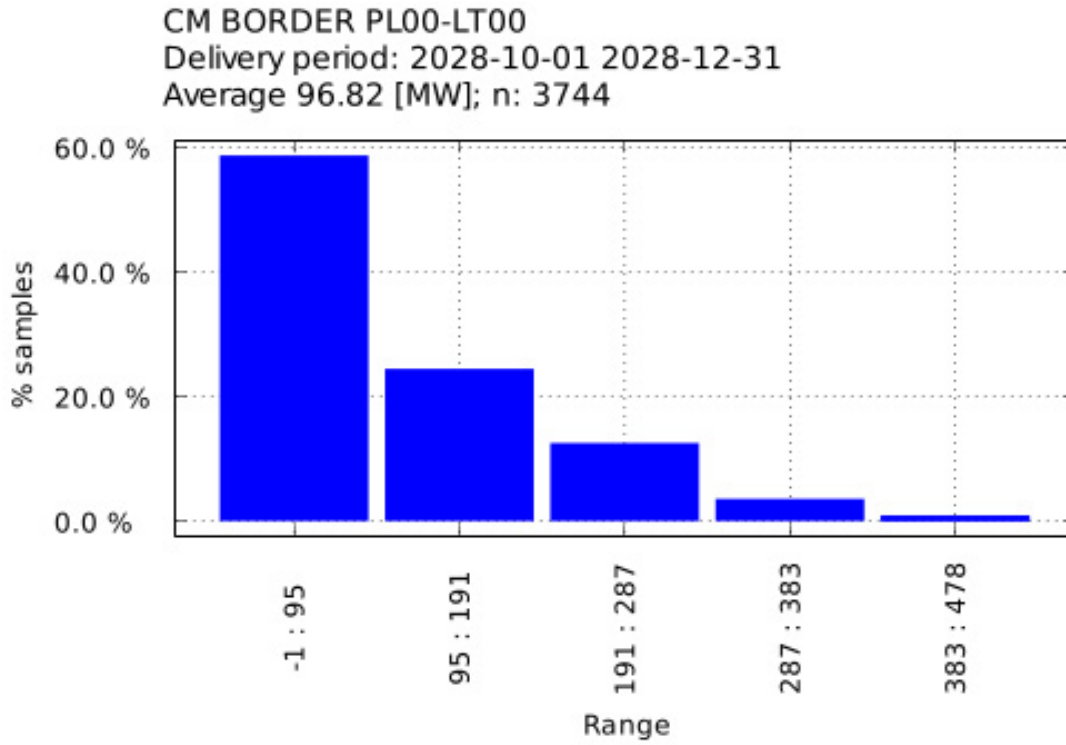


Figure 46 Contribution Chart for PL00-SE01, delivery period 01.10.2028-31.12.2028

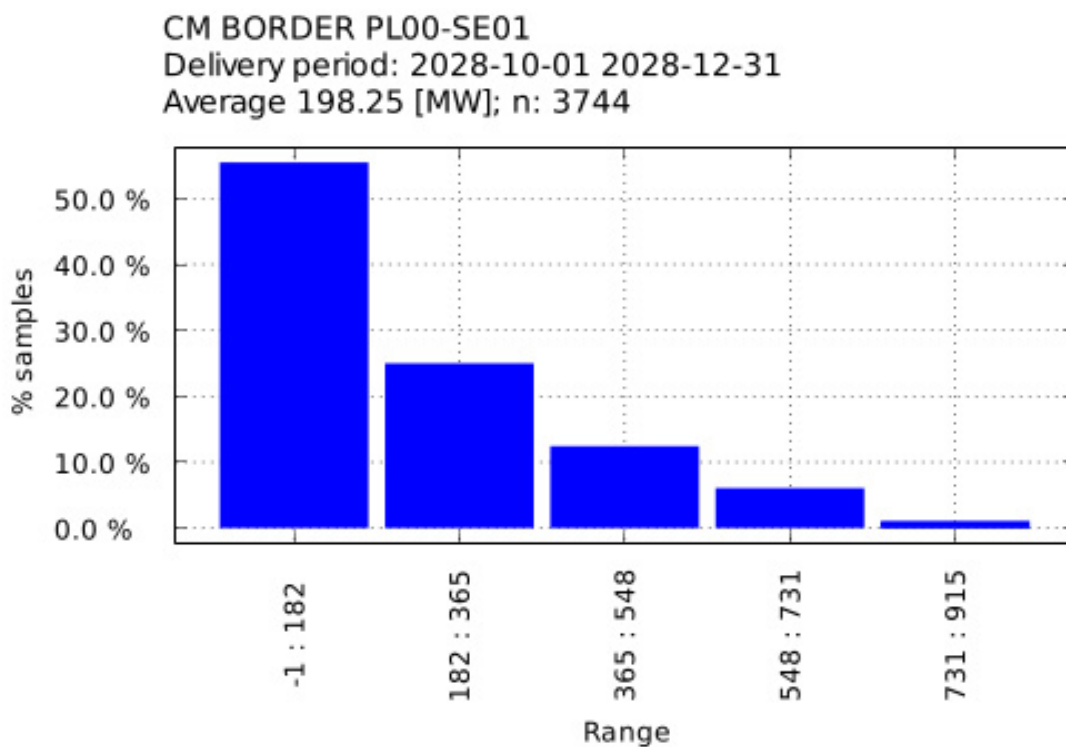


Figure 47 Contribution Chart for PL00-SE03, delivery period 01.10.2028-31.12.2028

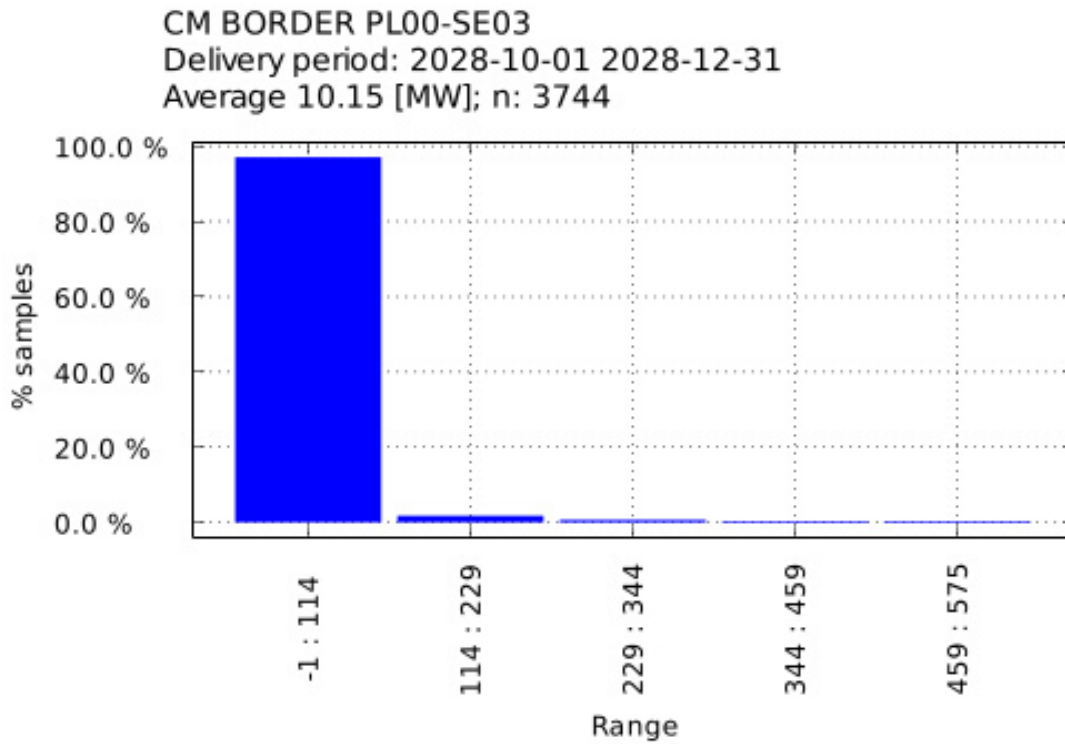


Figure 48 Contribution Chart for PL00-SE04, delivery period 01.10.2028-31.12.2028

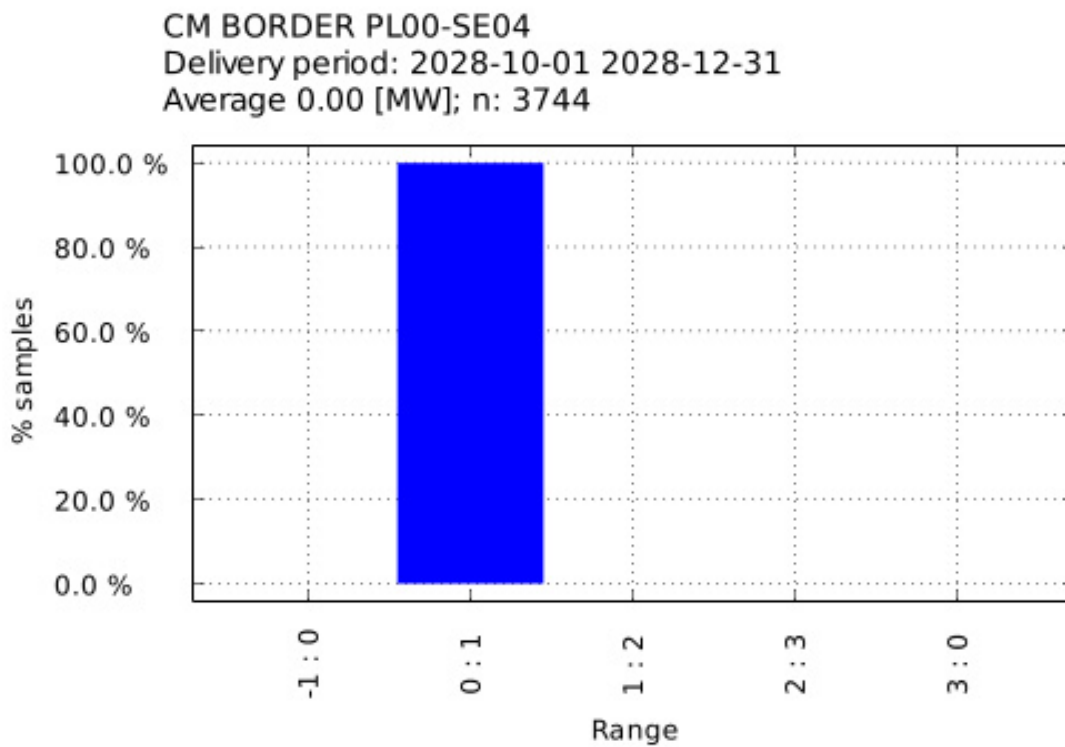


Figure 49 Contribution Chart for PL00-CZ00, delivery period 01.10.2028-31.12.2028

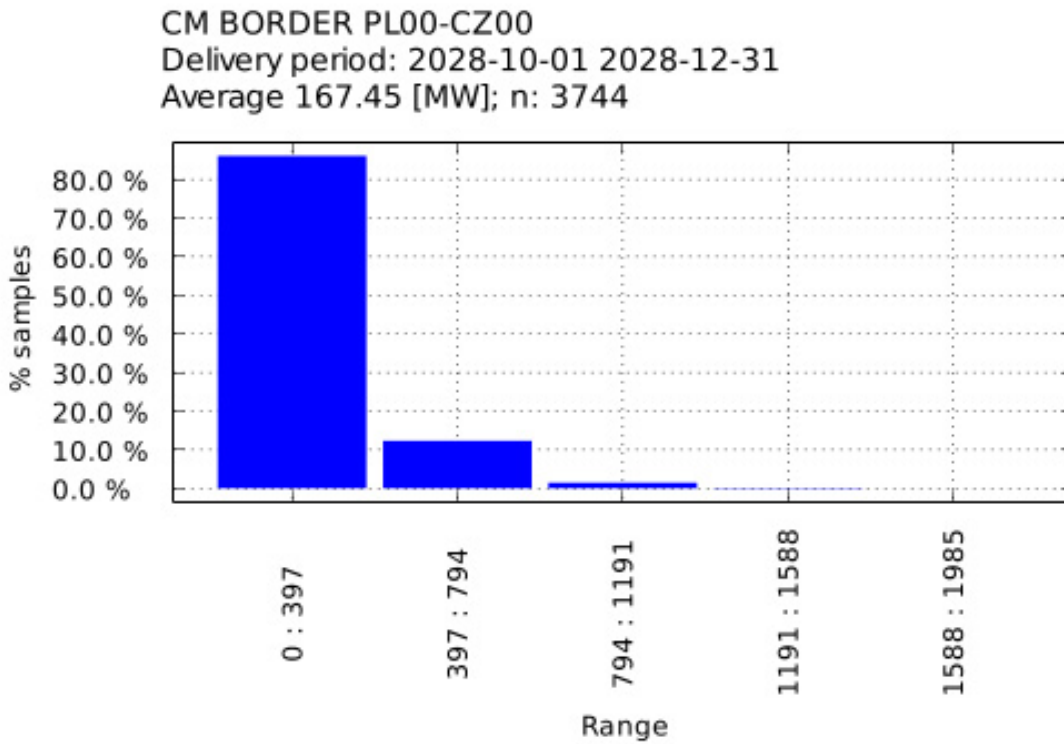


Figure 50 Contribution Chart for PL00-SK00, delivery period 01.10.2028-31.12.2028

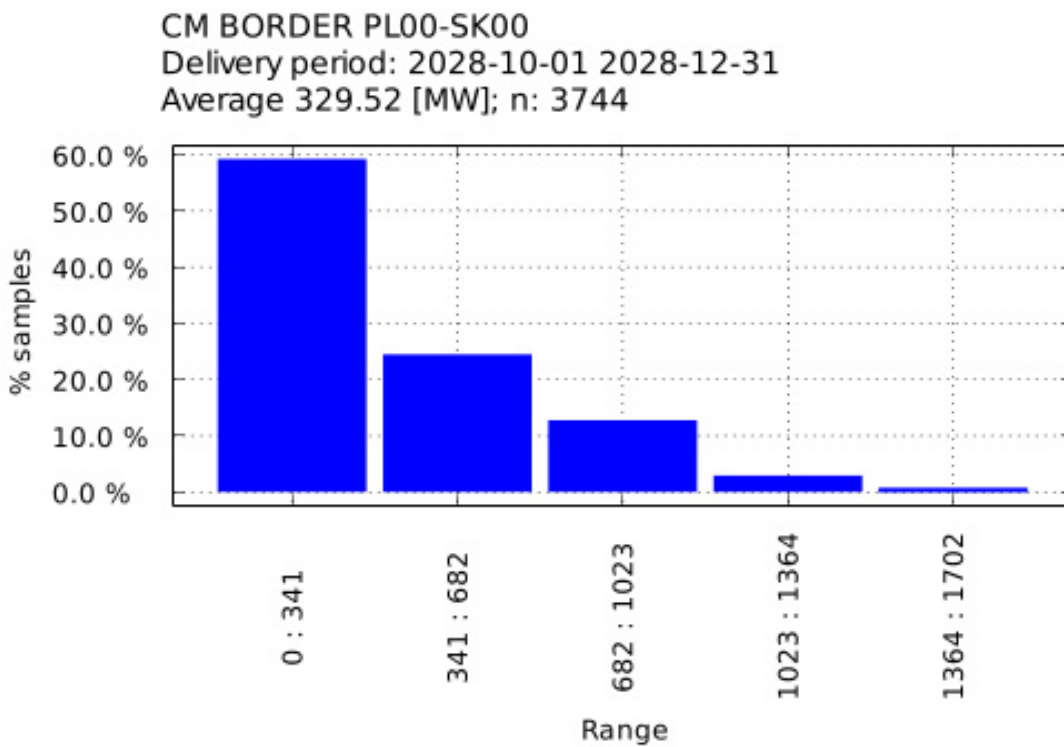


Figure 51 Contribution Chart for PLOO-SE02, delivery period 01.10.2028-31.12.2028

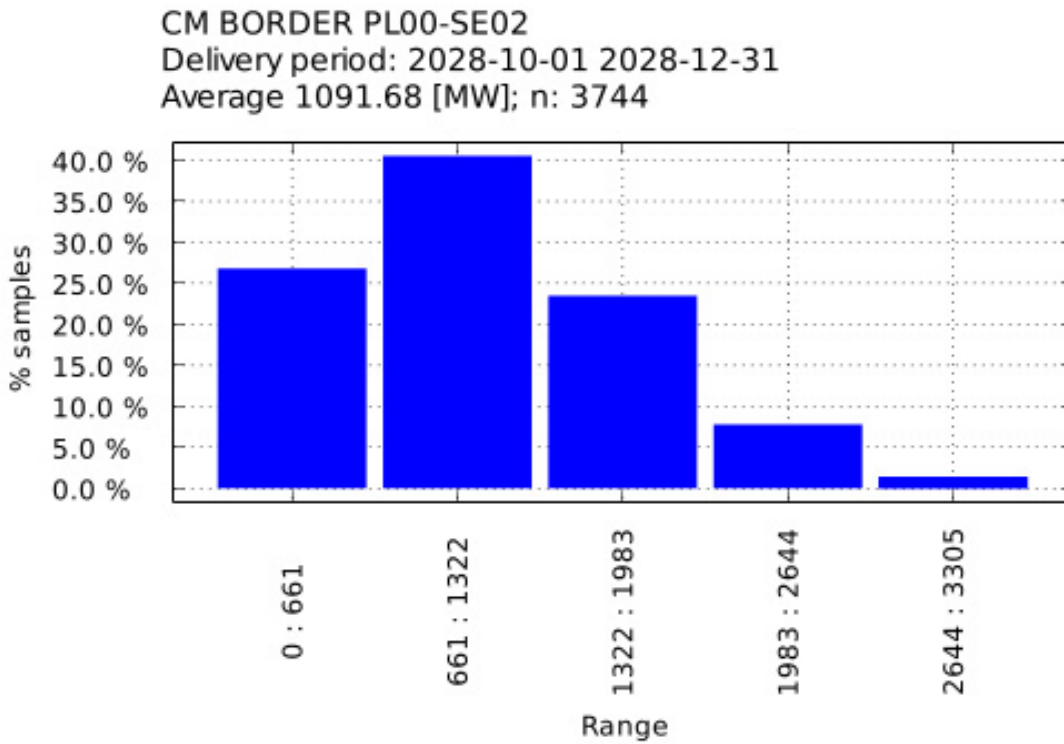
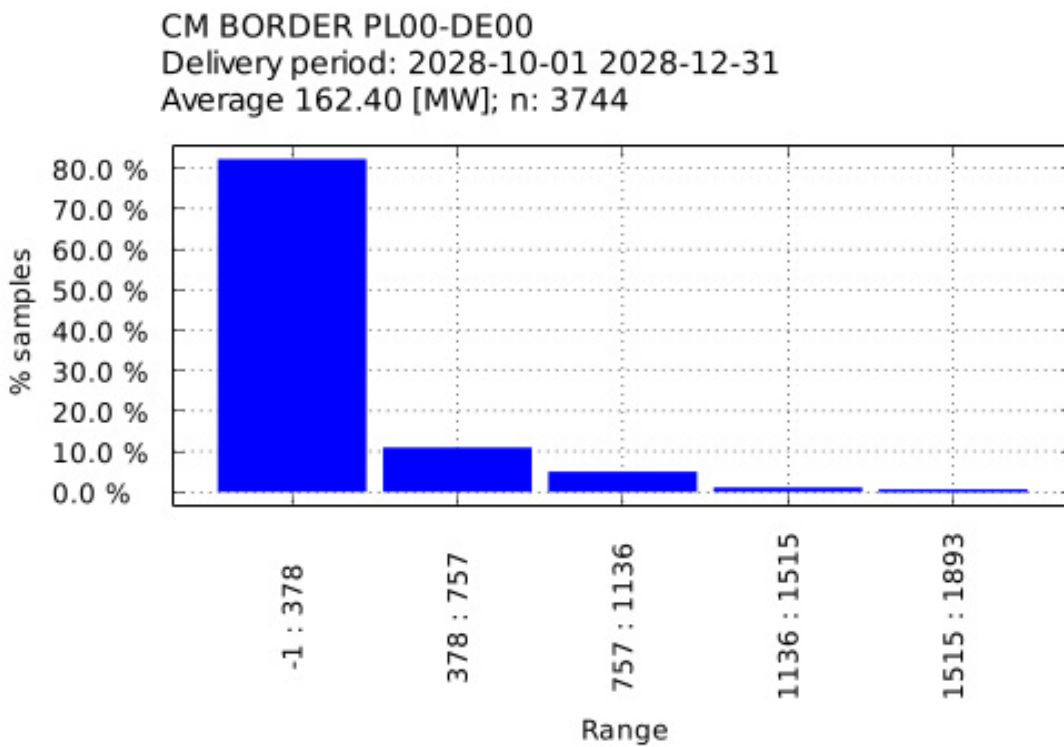


Figure 52 Contribution Chart for PLOO-DE00, delivery period 01.10.2028-31.12.2028



### 3.4.2 Destination bidding zone(s)

Figure 53 ENS for PL00, delivery period 01.10.2028-31.12.2028

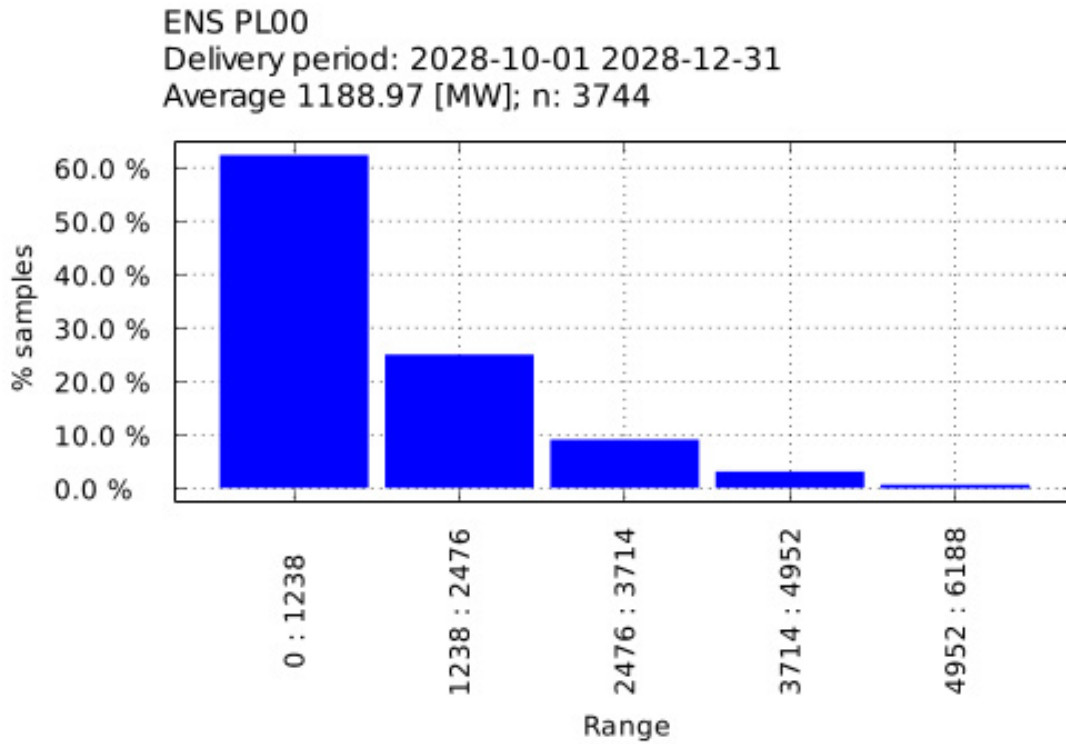


Figure 54 Margin With Import for PL00, delivery period 01.10.2028-31.12.2028

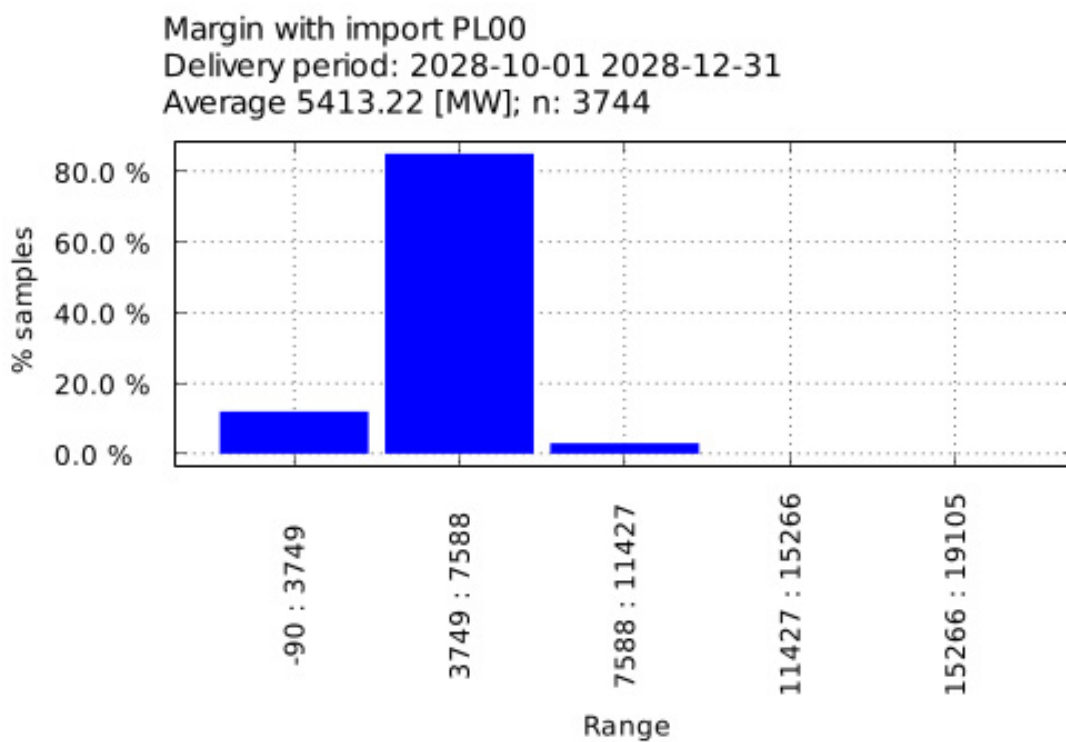


Figure 55 NP for PL00, delivery period 01.10.2028-31.12.2028

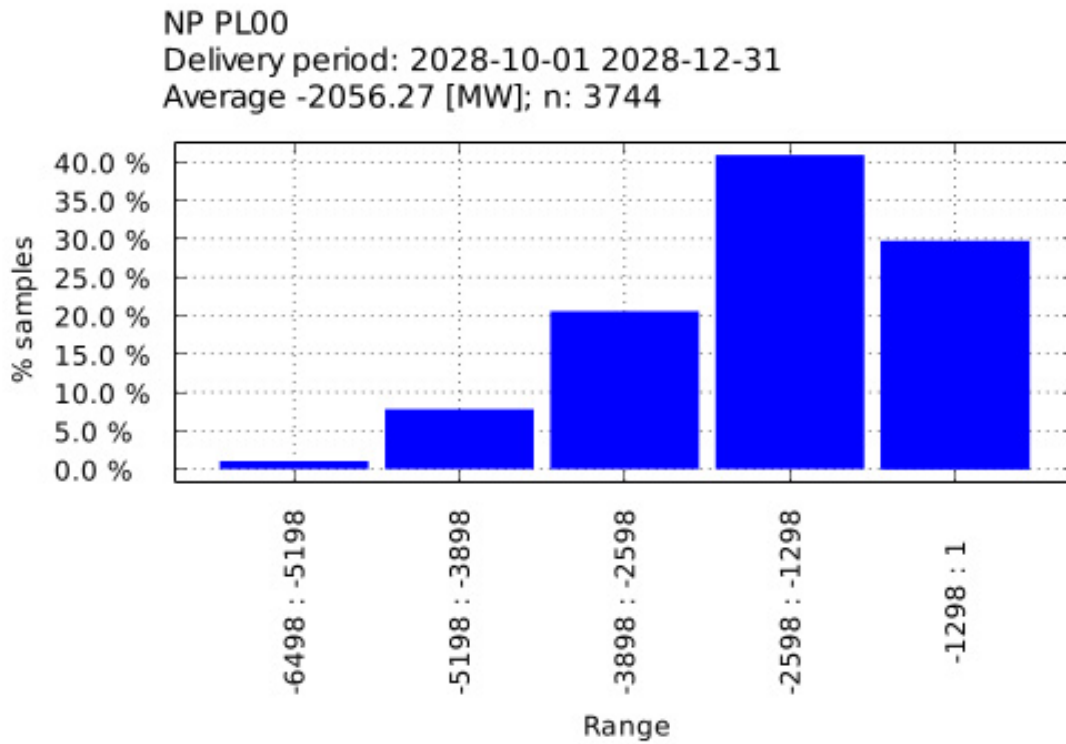
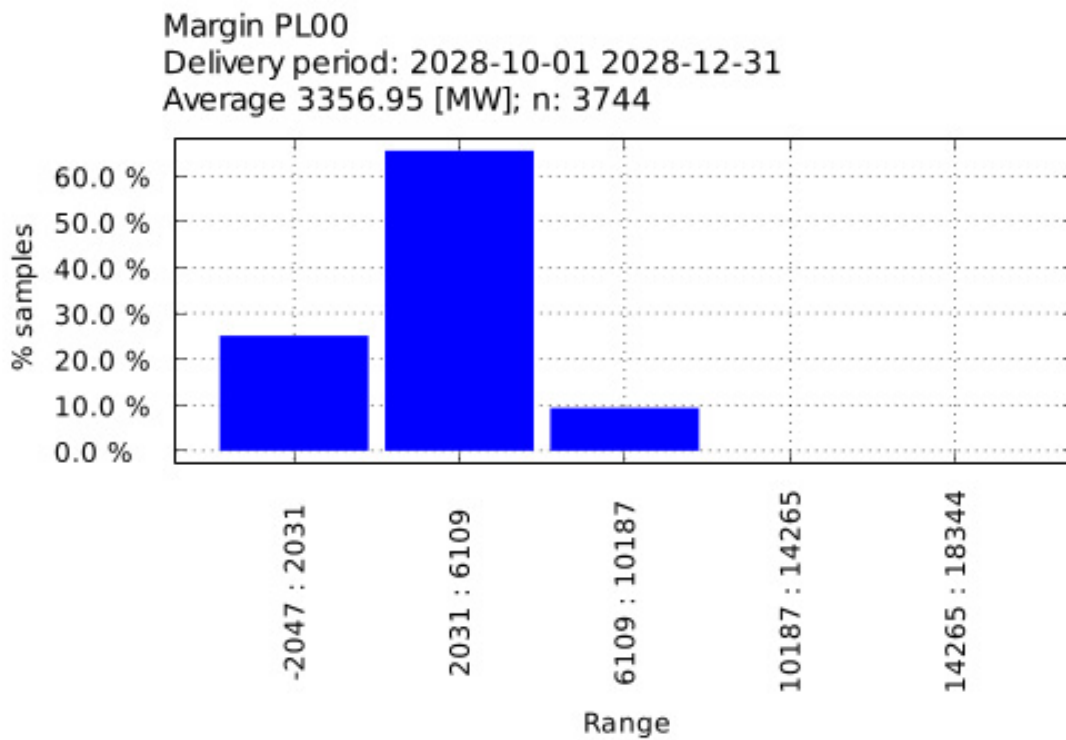


Figure 56 Margin Without Import for PL00, delivery period 01.10.2028-31.12.2028



### 3.4.3 Origin bidding zone(s)

Figure 57 ENS for CZ00, delivery period 01.10.2028-31.12.2028

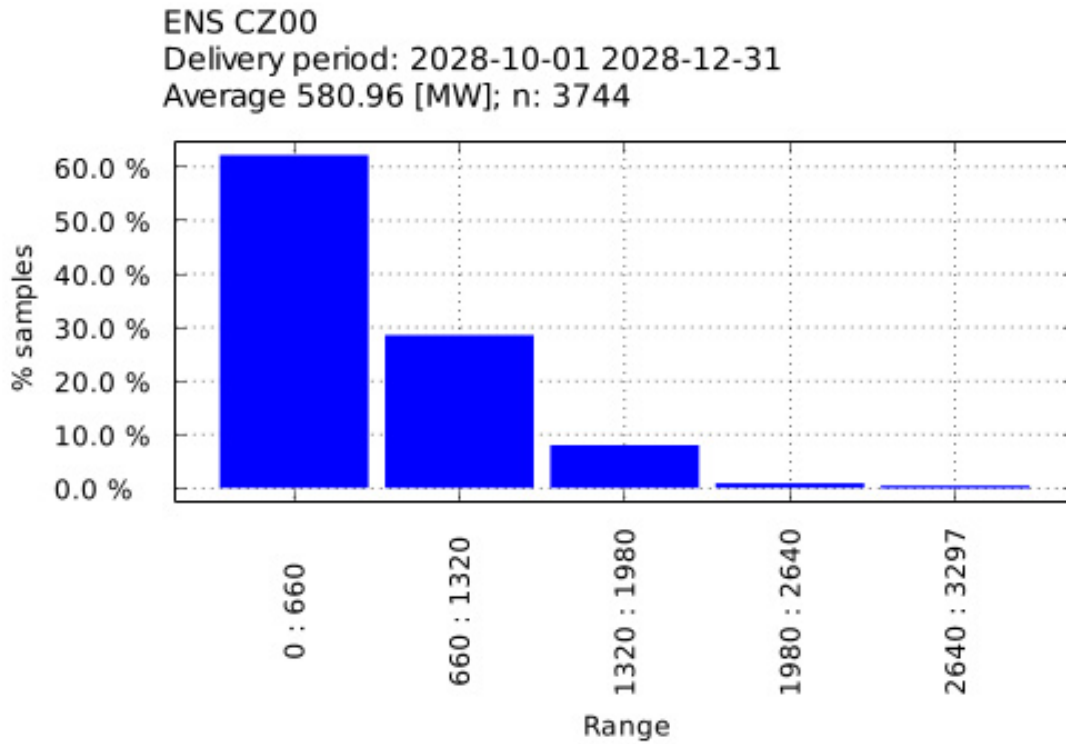


Figure 58 NP for CZ00, delivery period 01.10.2028-31.12.2028

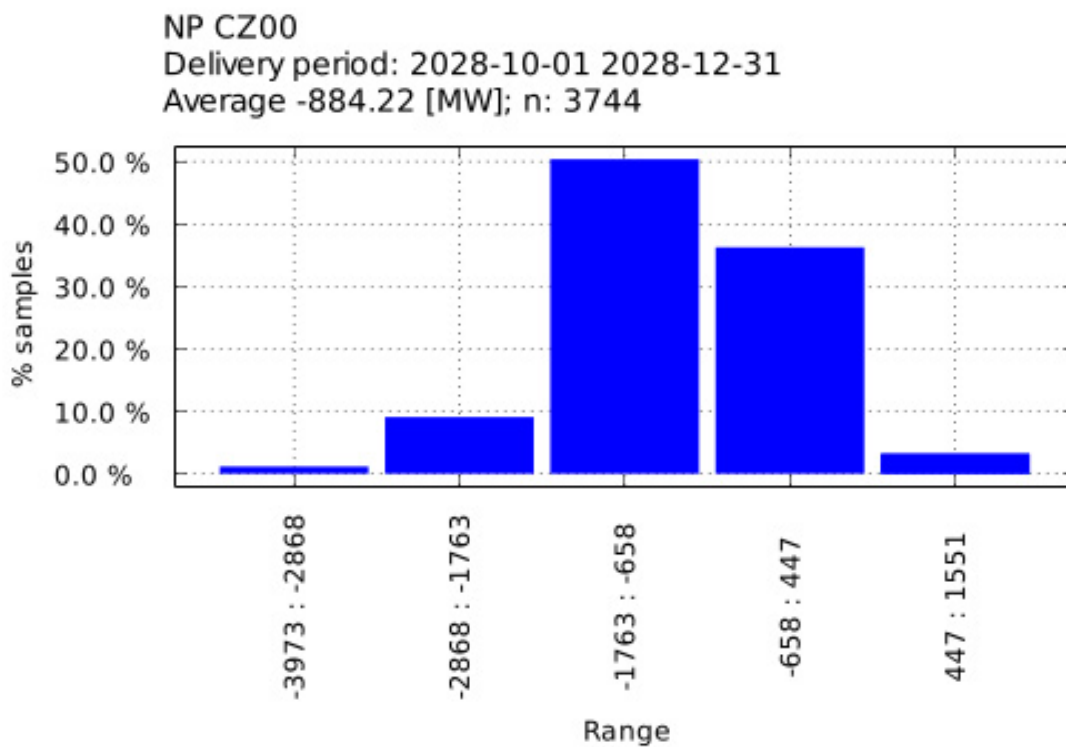


Figure 59 Margin Without Import for CZ00, delivery period 01.10.2028-31.12.2028

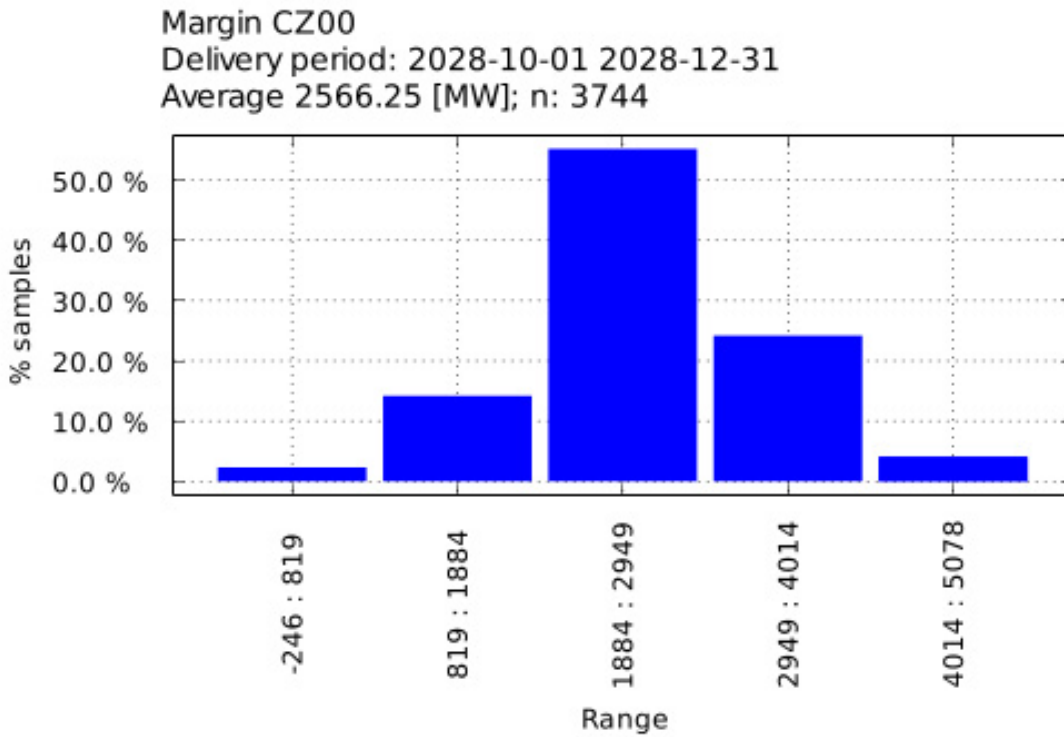


Figure 60 Margin With Import for CZ00, delivery period 01.10.2028-31.12.2028

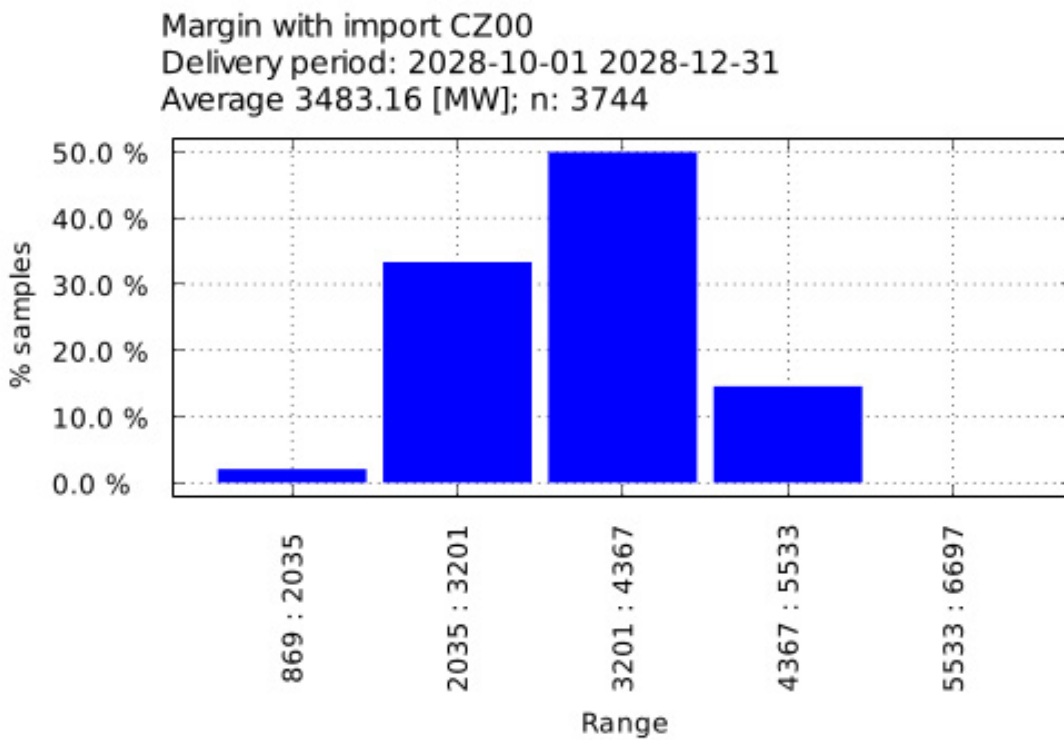


Figure 61 Margin With Import for DE00, delivery period 01.10.2028-31.12.2028

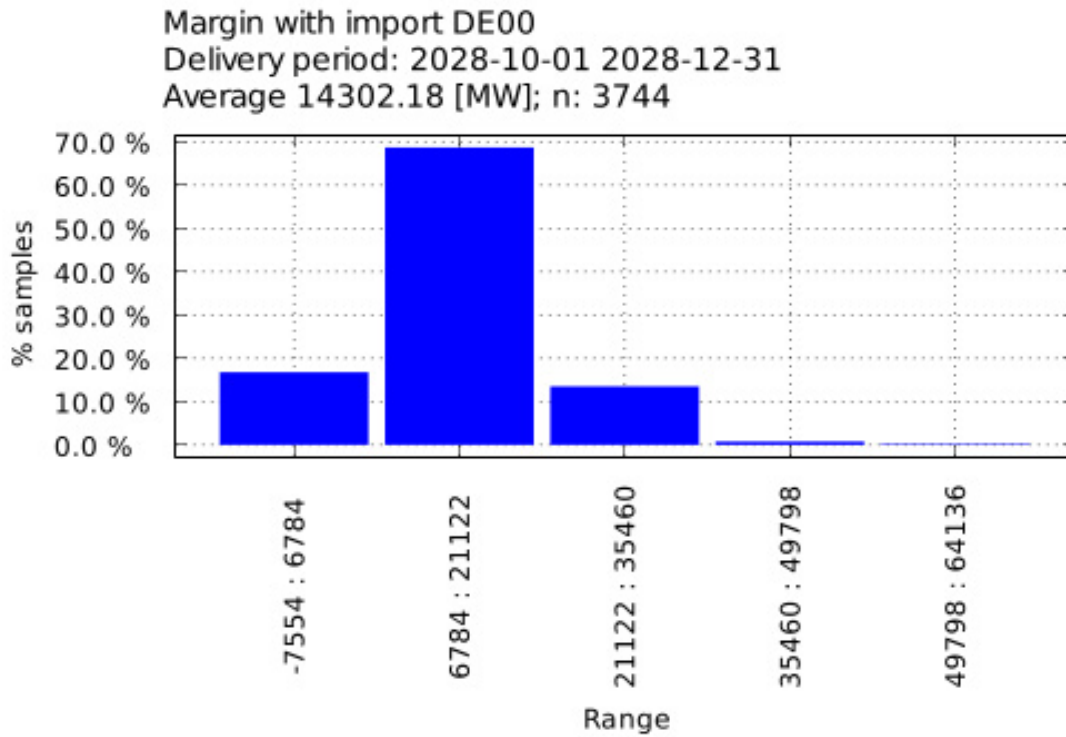


Figure 62 Margin Without Import for DE00, delivery period 01.10.2028-31.12.2028

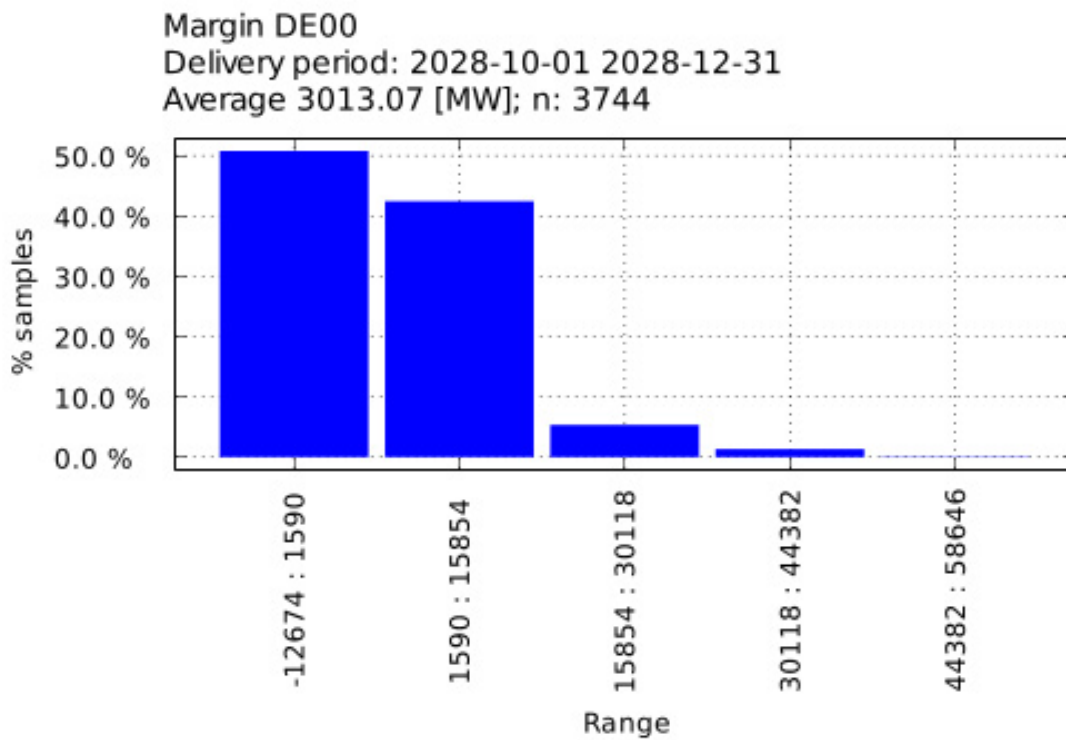


Figure 63 NP for DE00, delivery period 01.10.2028-31.12.2028

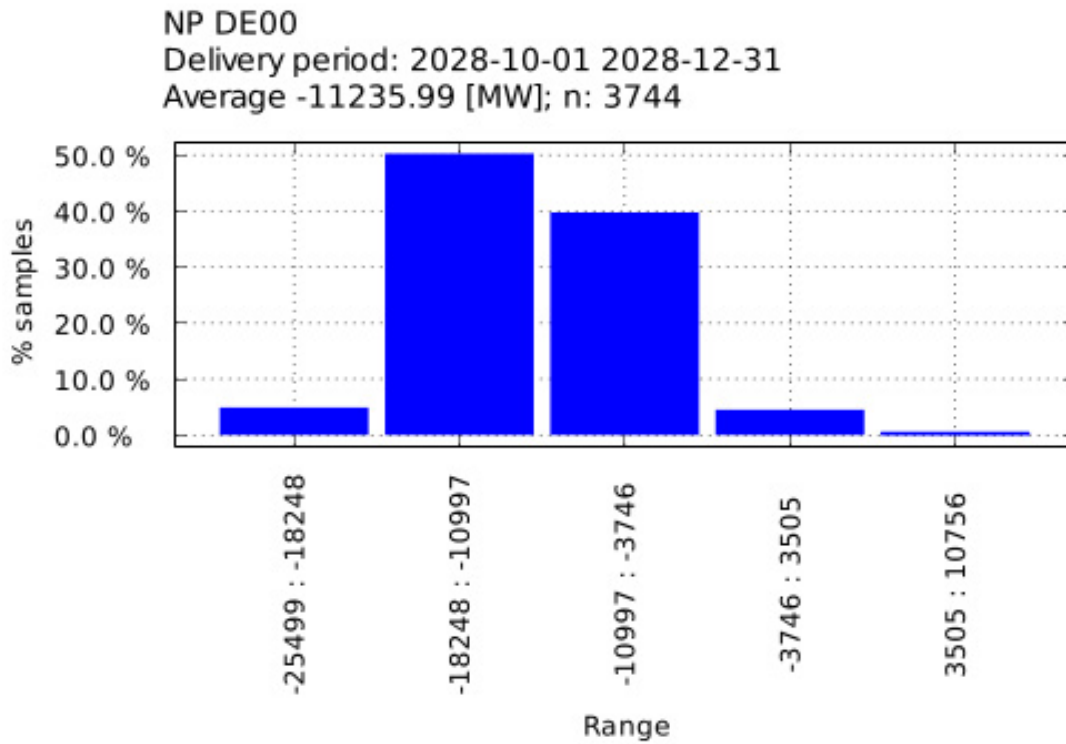


Figure 64 ENS for DE00, delivery period 01.10.2028-31.12.2028

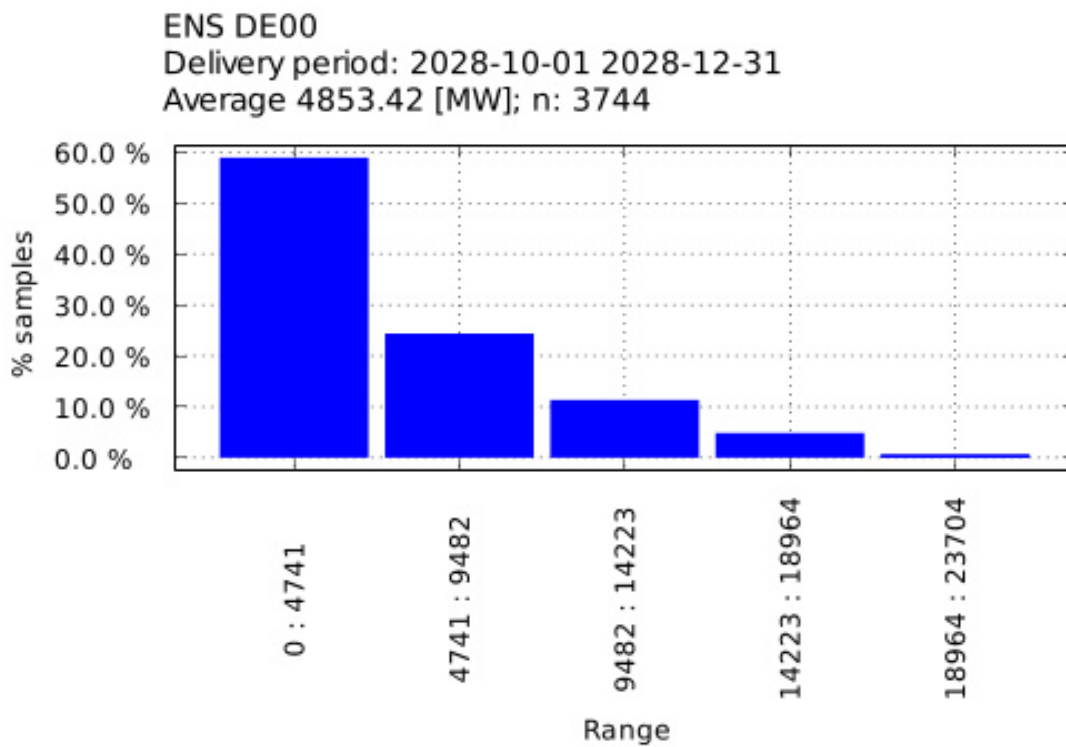


Figure 65 Margin Without Import for LT00, delivery period 01.10.2028-31.12.2028

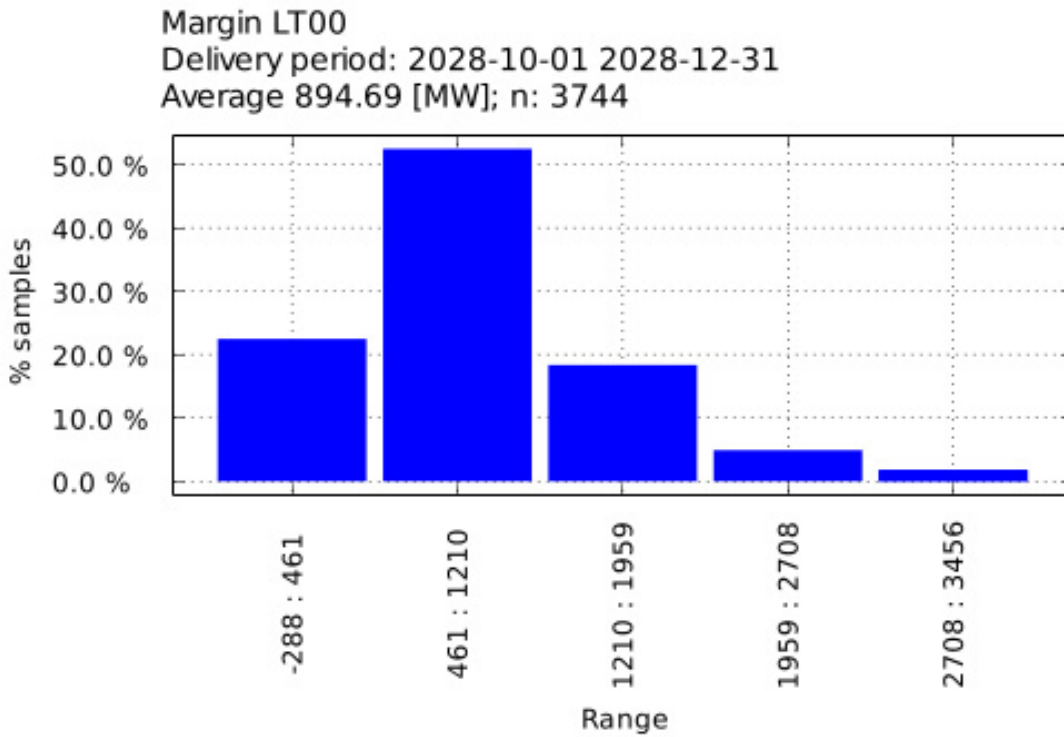


Figure 66 NP for LT00, delivery period 01.10.2028-31.12.2028

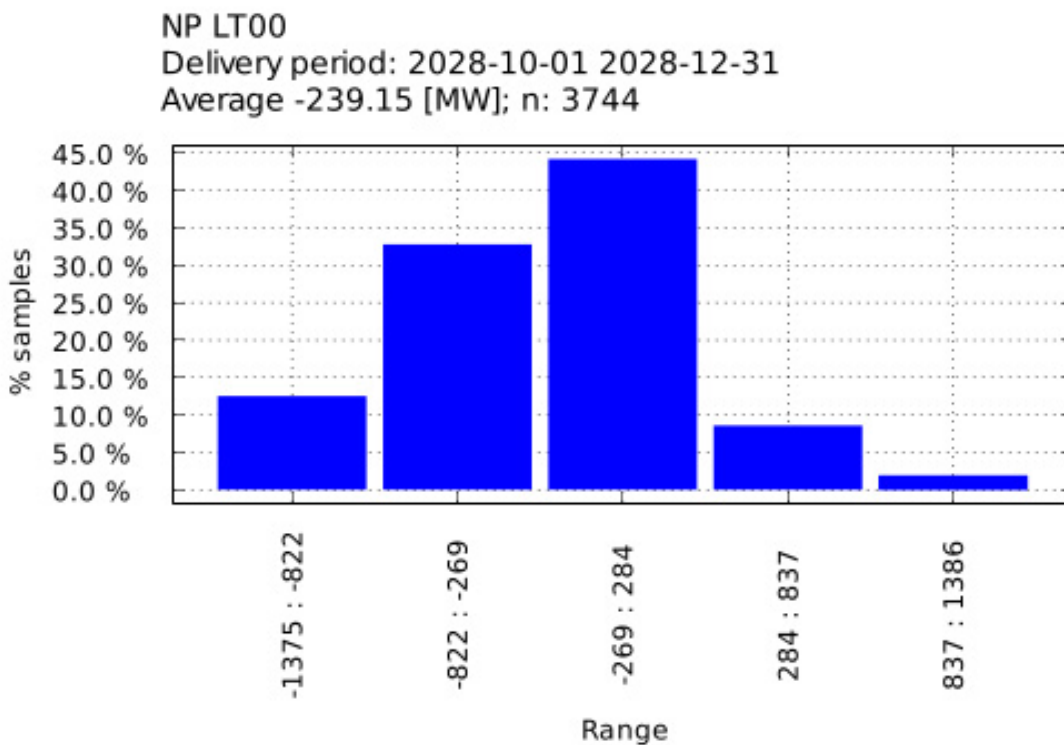


Figure 67 ENS for LT00, delivery period 01.10.2028-31.12.2028

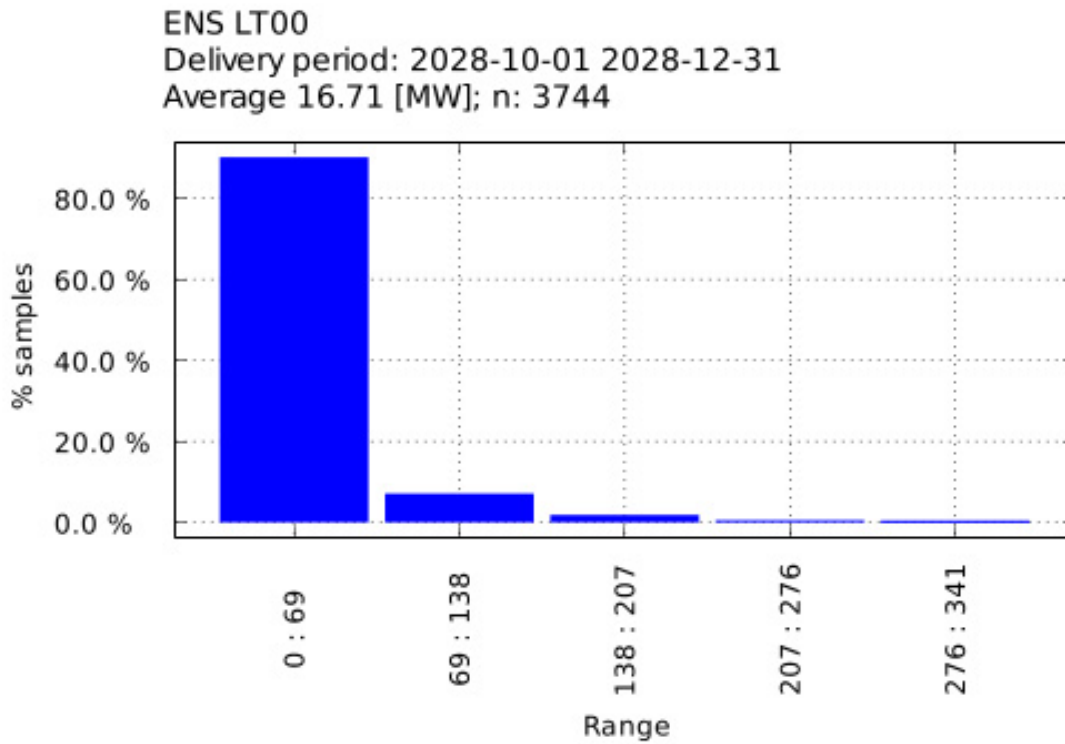


Figure 68 Margin With Import for LT00, delivery period 01.10.2028-31.12.2028

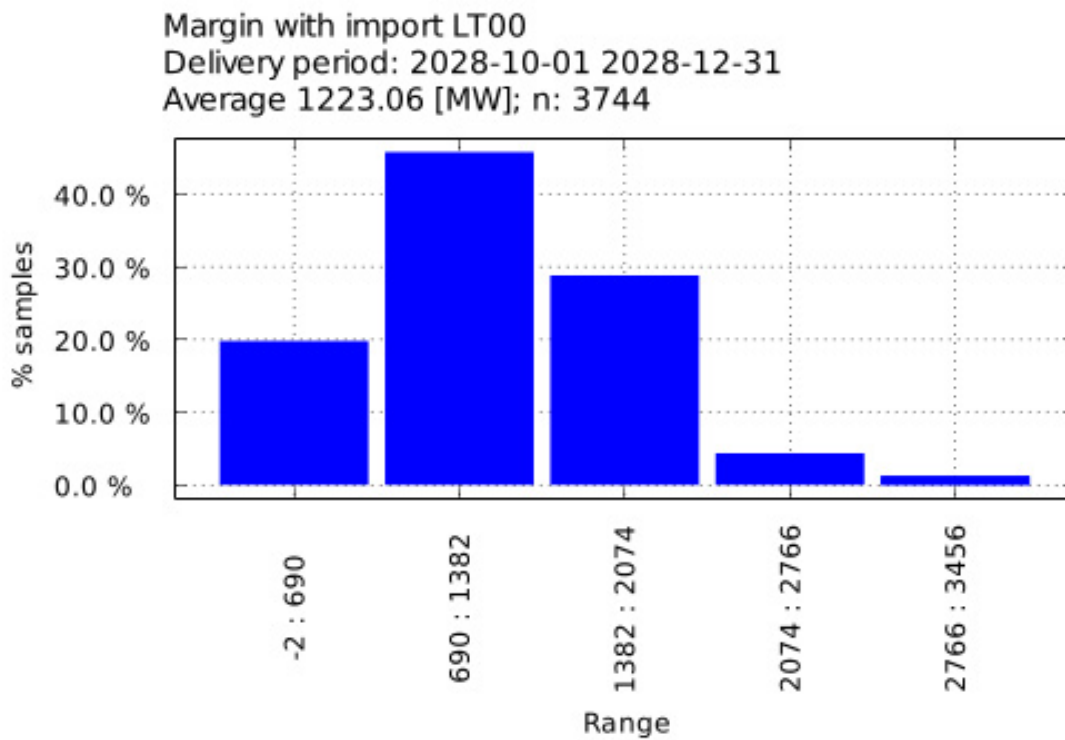


Figure 69 NP for SE01, delivery period 01.10.2028-31.12.2028

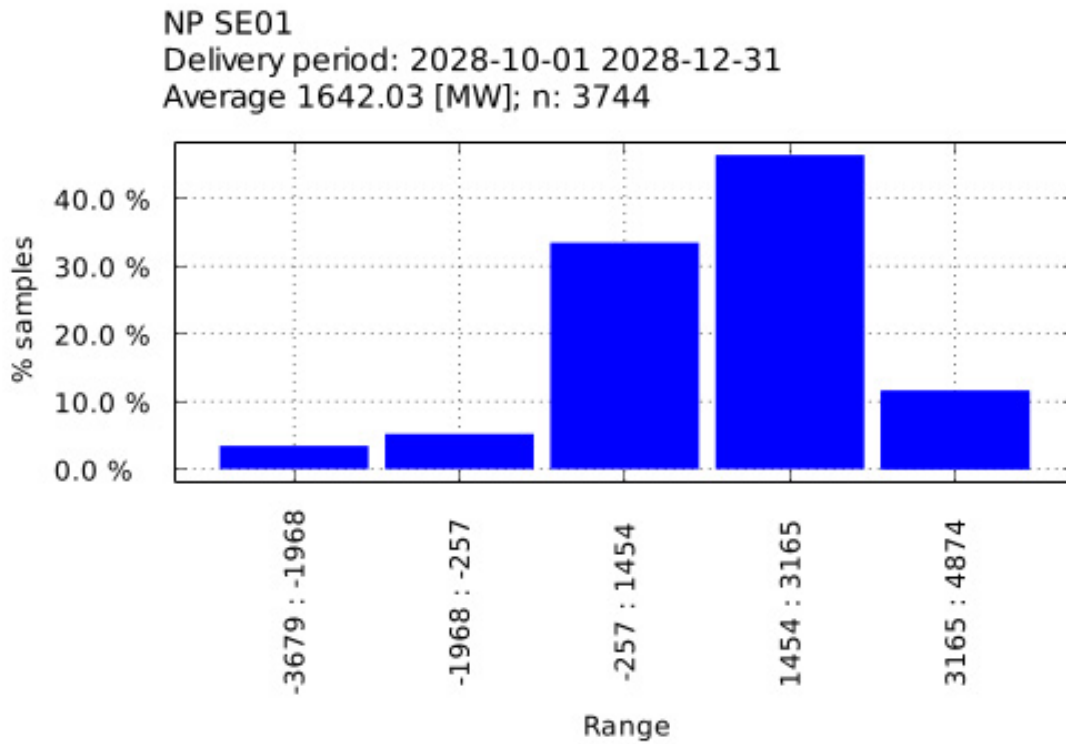


Figure 70 Margin With Import for SE01, delivery period 01.10.2028-31.12.2028

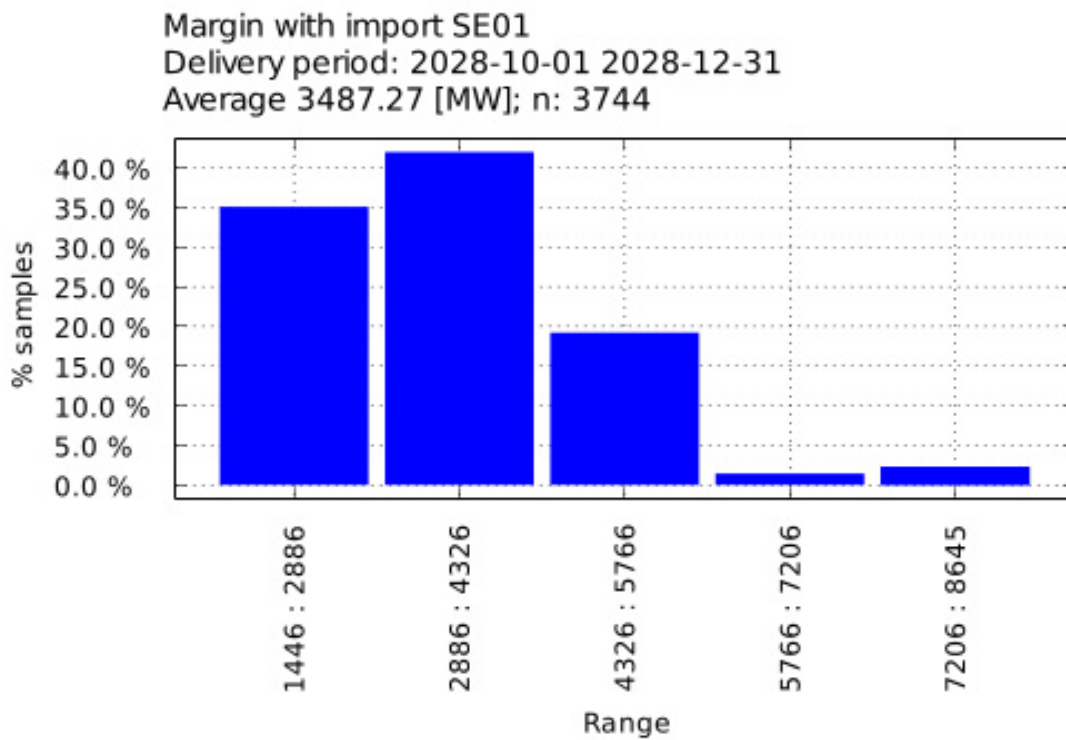


Figure 71 Margin Without Import for SE01, delivery period 01.10.2028-31.12.2028

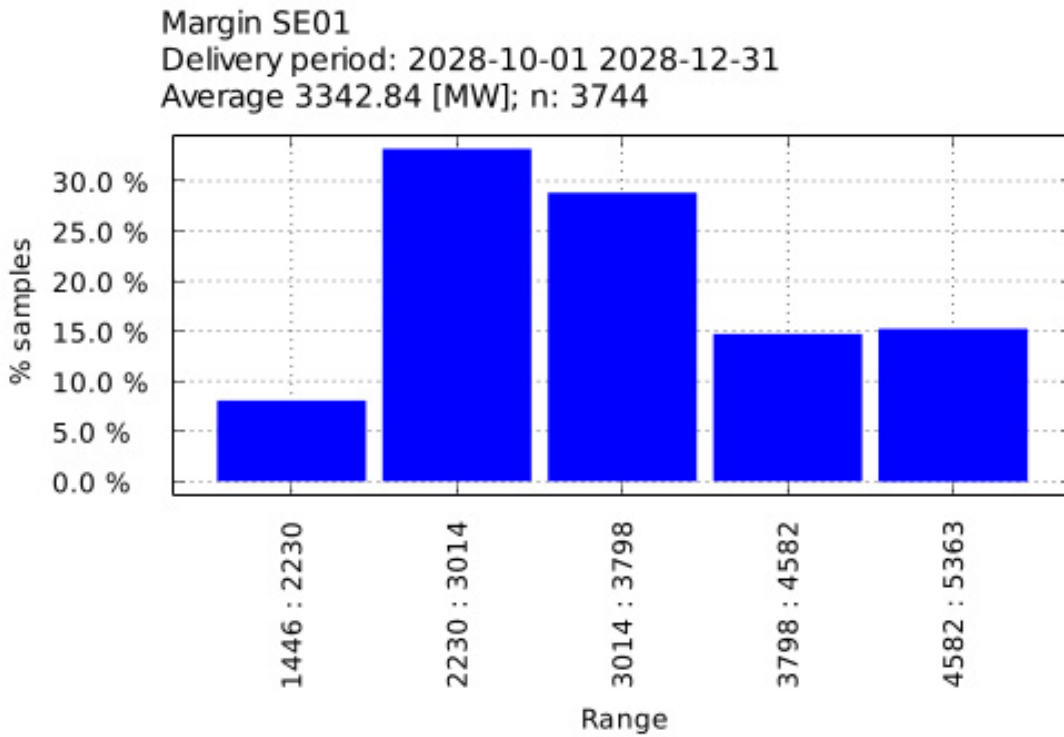


Figure 72 ENS for SE01, delivery period 01.10.2028-31.12.2028

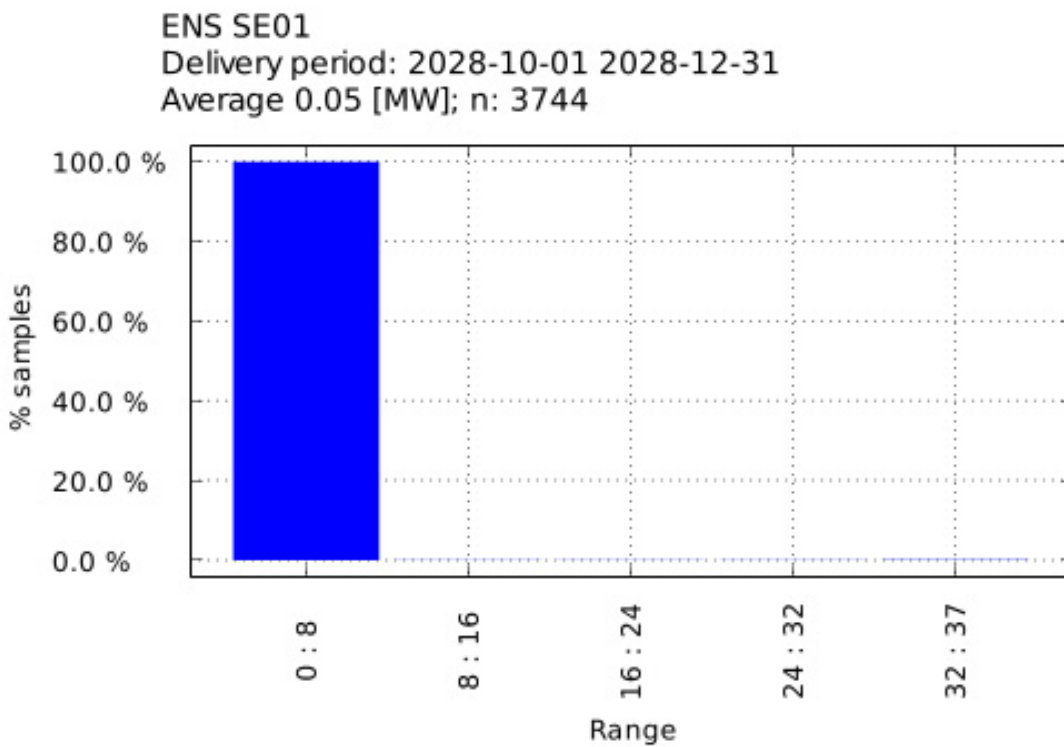


Figure 73 ENS for SE02, delivery period 01.10.2028-31.12.2028

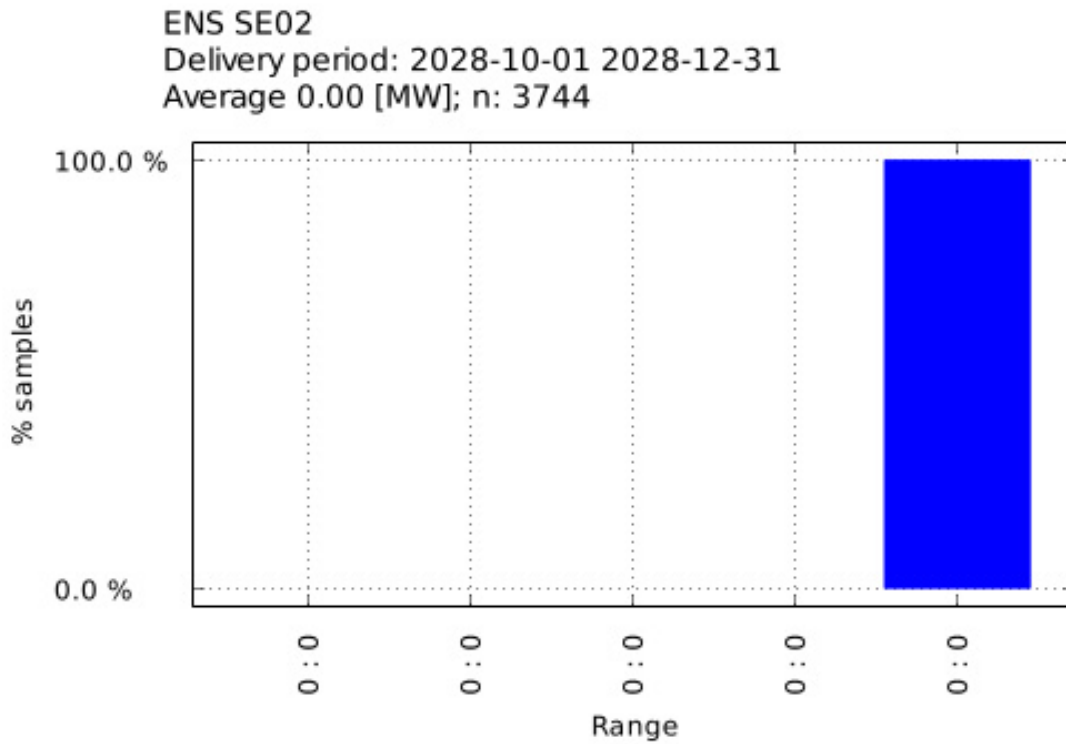


Figure 74 Margin Without Import for SE02, delivery period 01.10.2028-31.12.2028

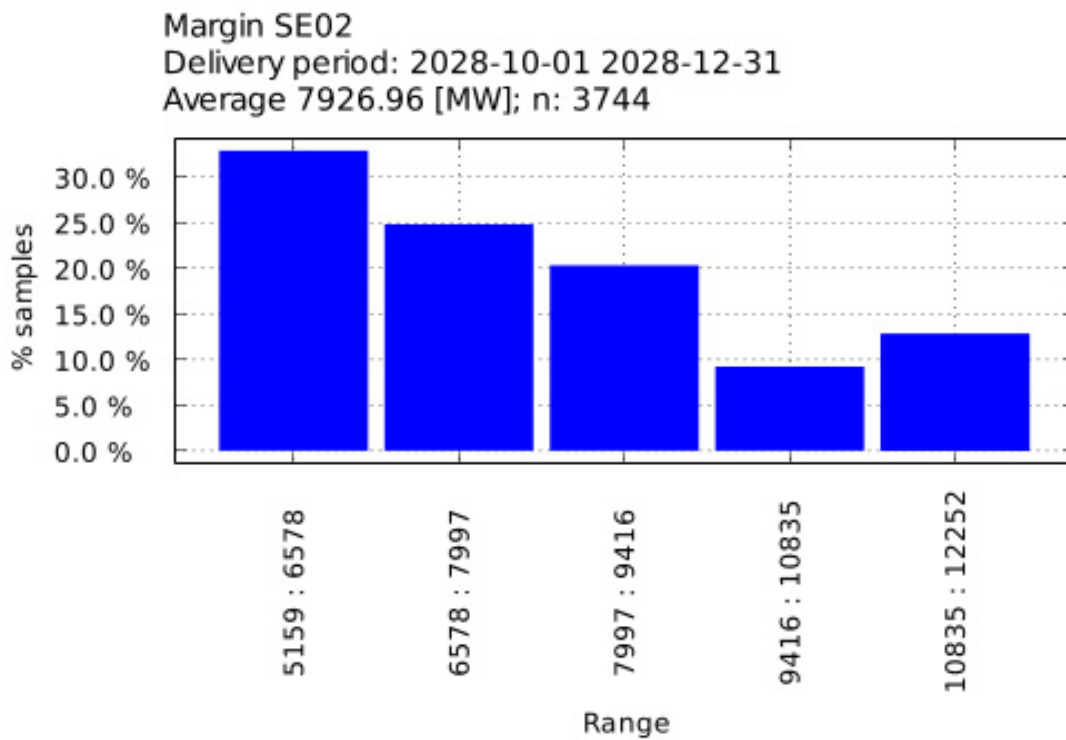


Figure 75 NP for SE02, delivery period 01.10.2028-31.12.2028

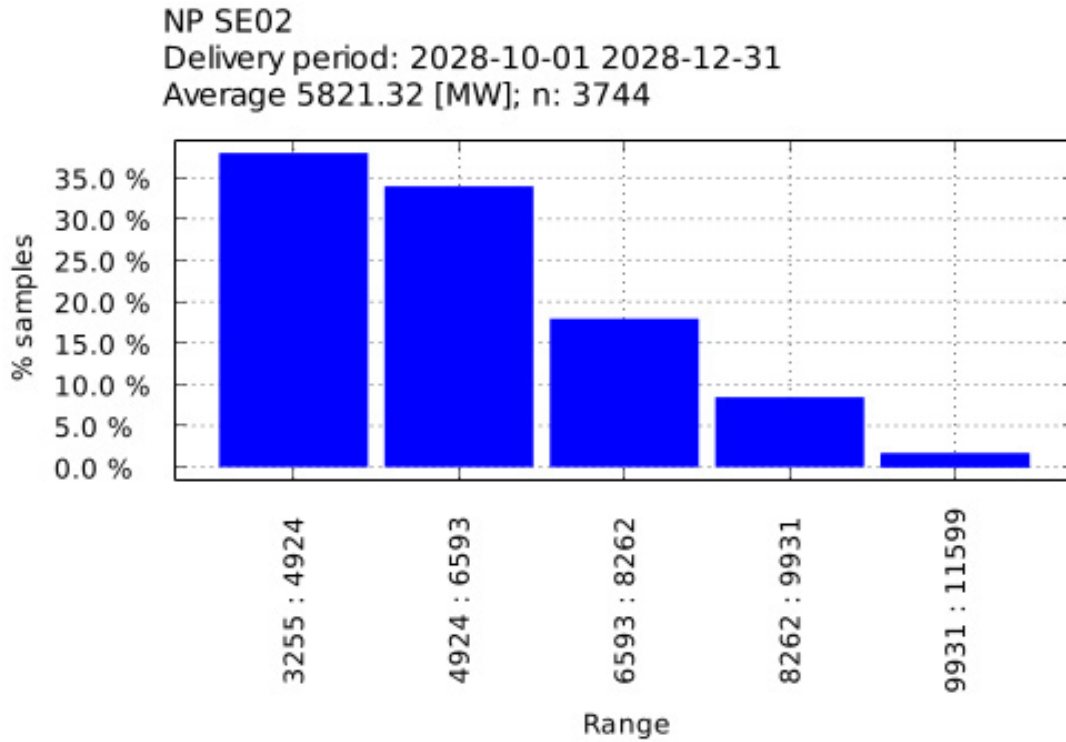


Figure 76 Margin With Import for SE02, delivery period 01.10.2028-31.12.2028

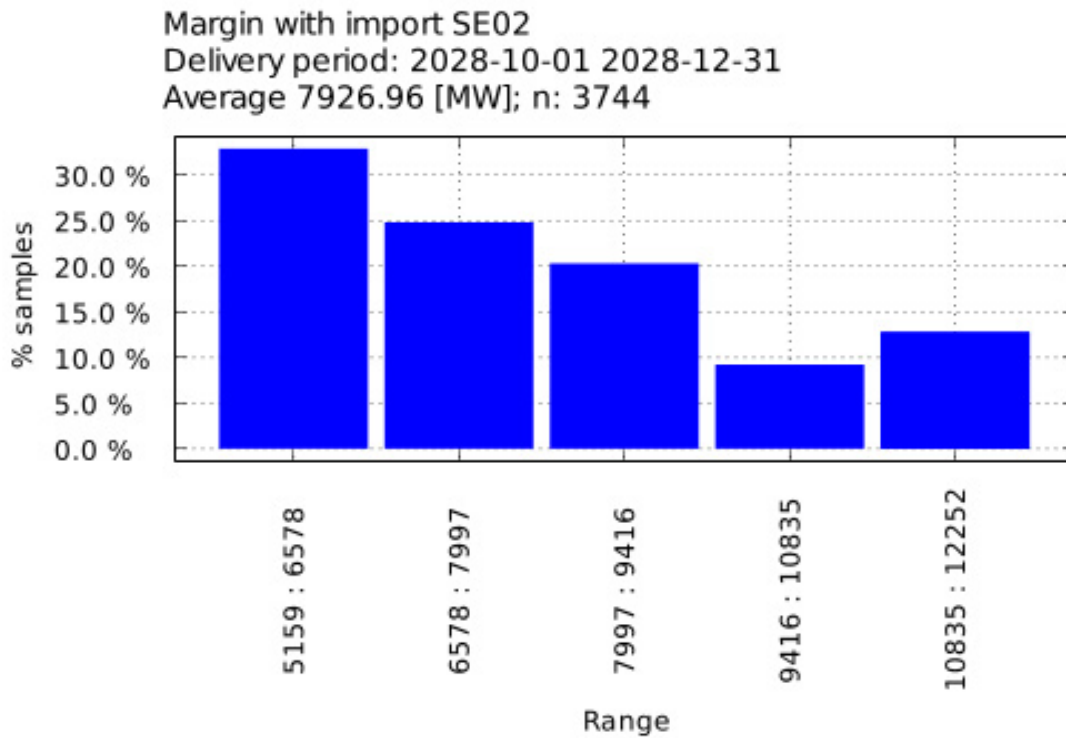


Figure 77 ENS for SE03, delivery period 01.10.2028-31.12.2028

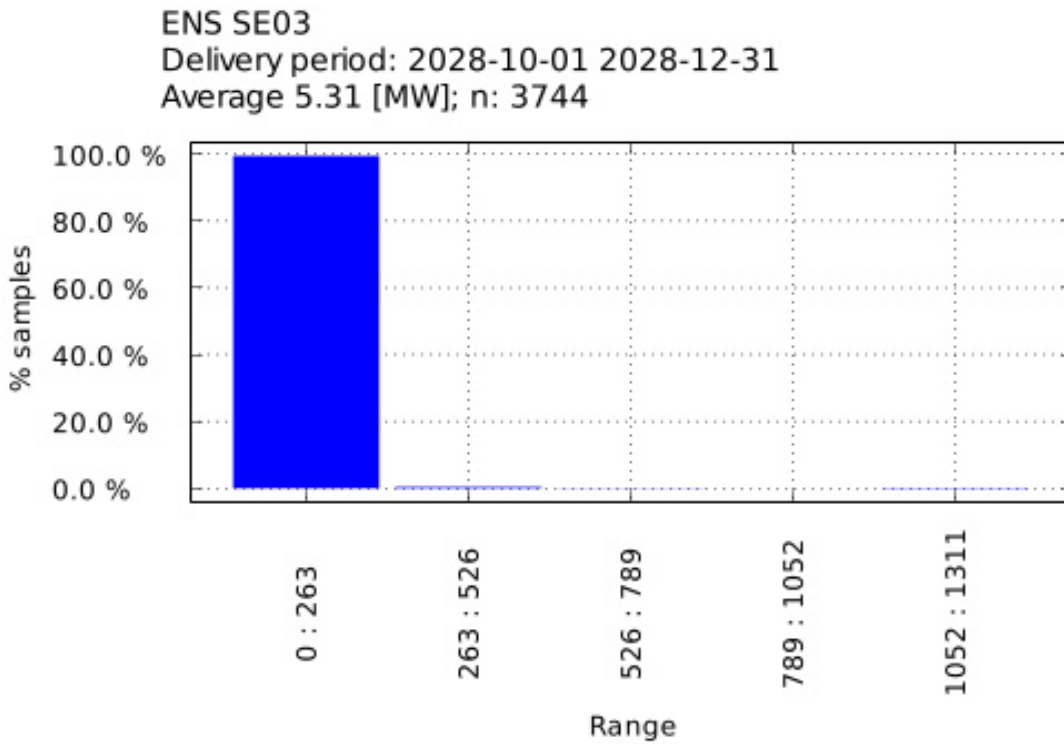


Figure 78 Margin Without Import for SE03, delivery period 01.10.2028-31.12.2028

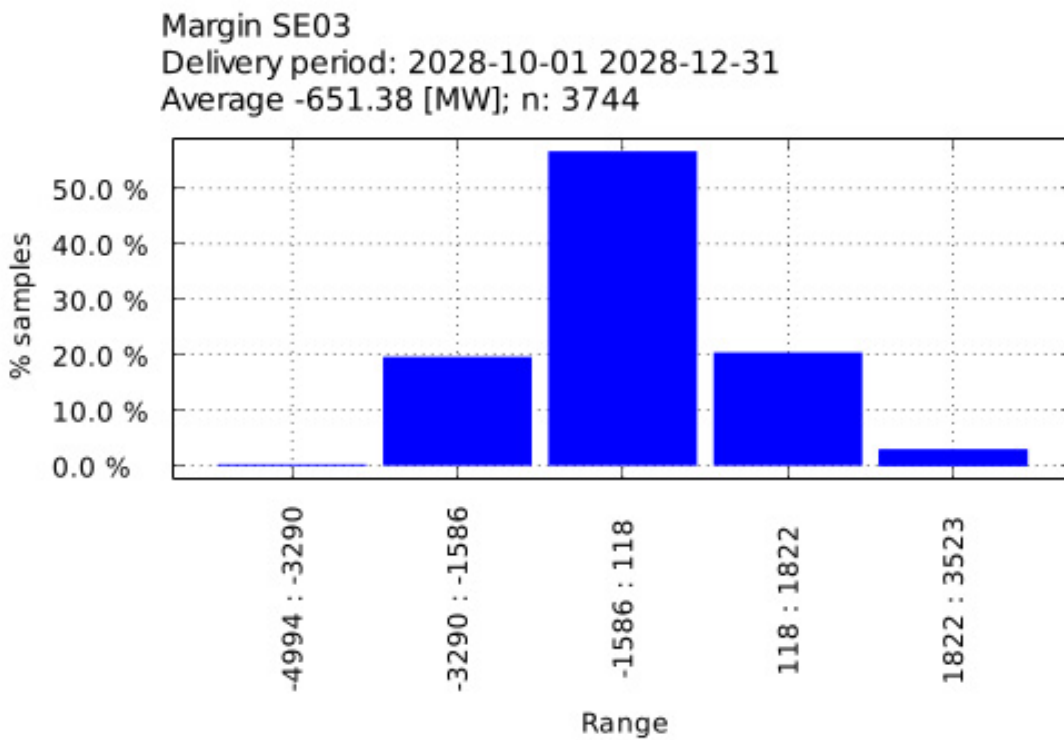


Figure 79 Margin With Import for SE03, delivery period 01.10.2028-31.12.2028

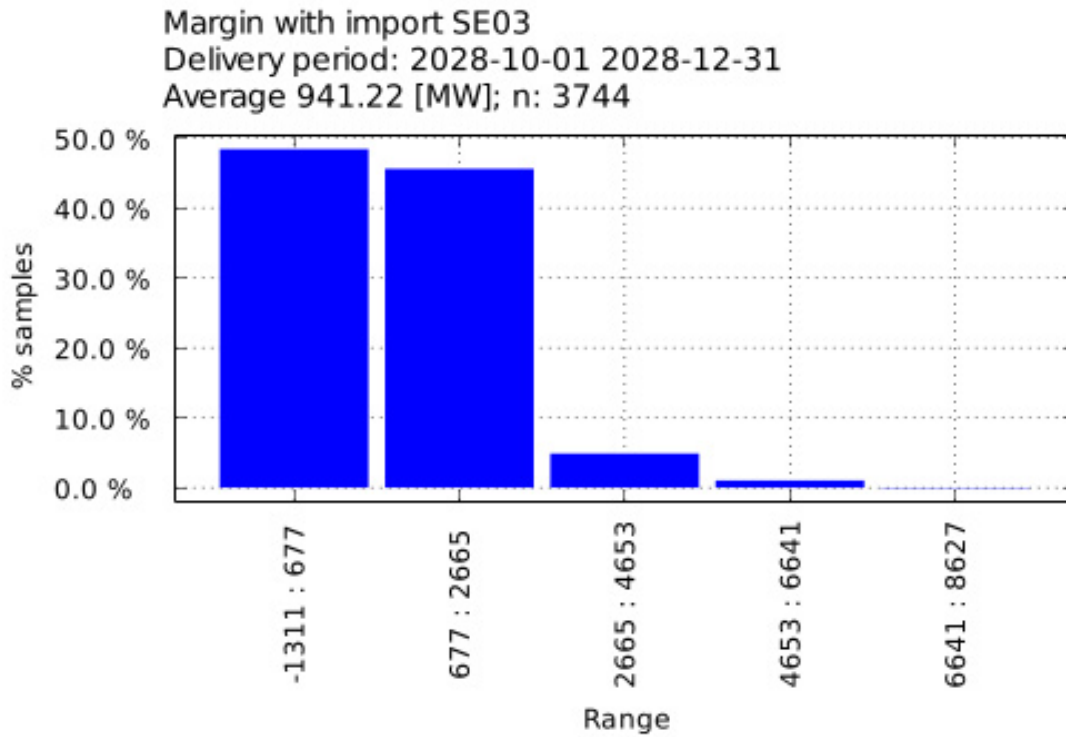


Figure 80 NP for SE03, delivery period 01.10.2028-31.12.2028

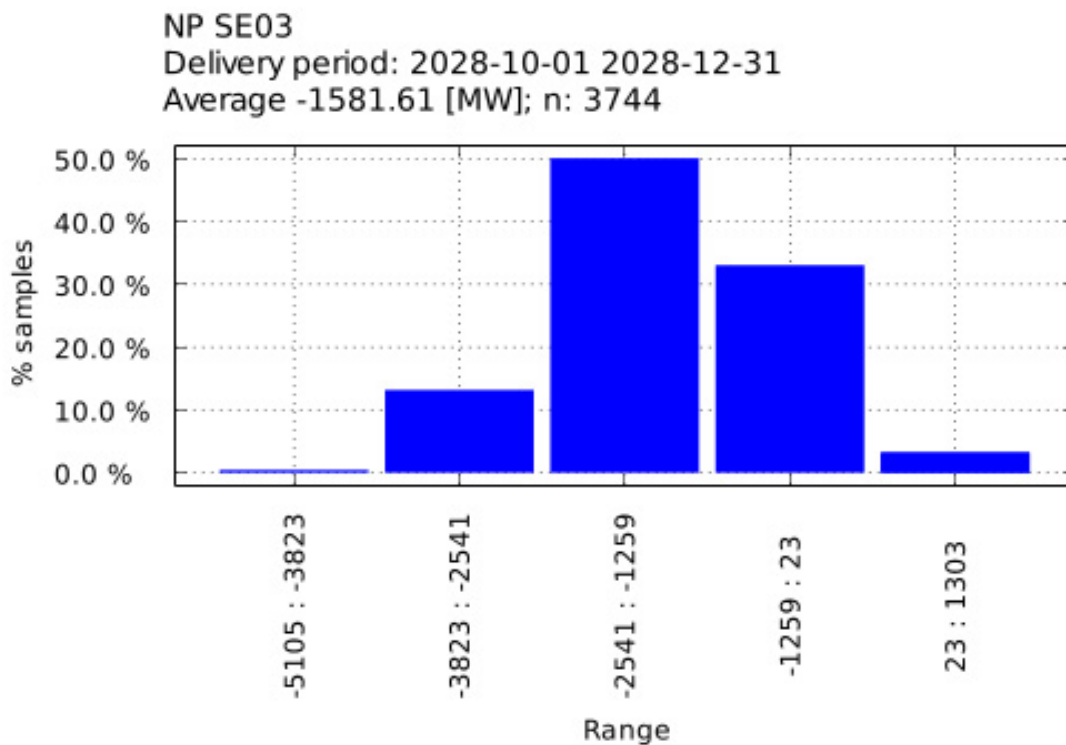


Figure 81 Margin Without Import for SE04, delivery period 01.10.2028-31.12.2028

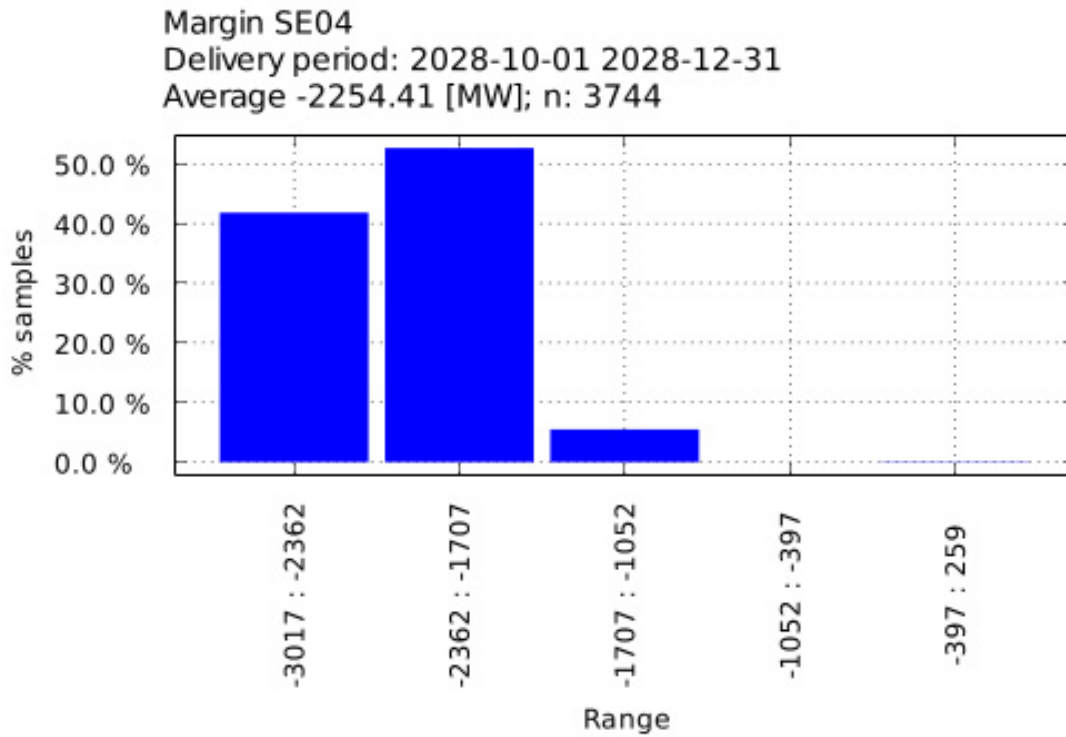


Figure 82 Margin With Import for SE04, delivery period 01.10.2028-31.12.2028

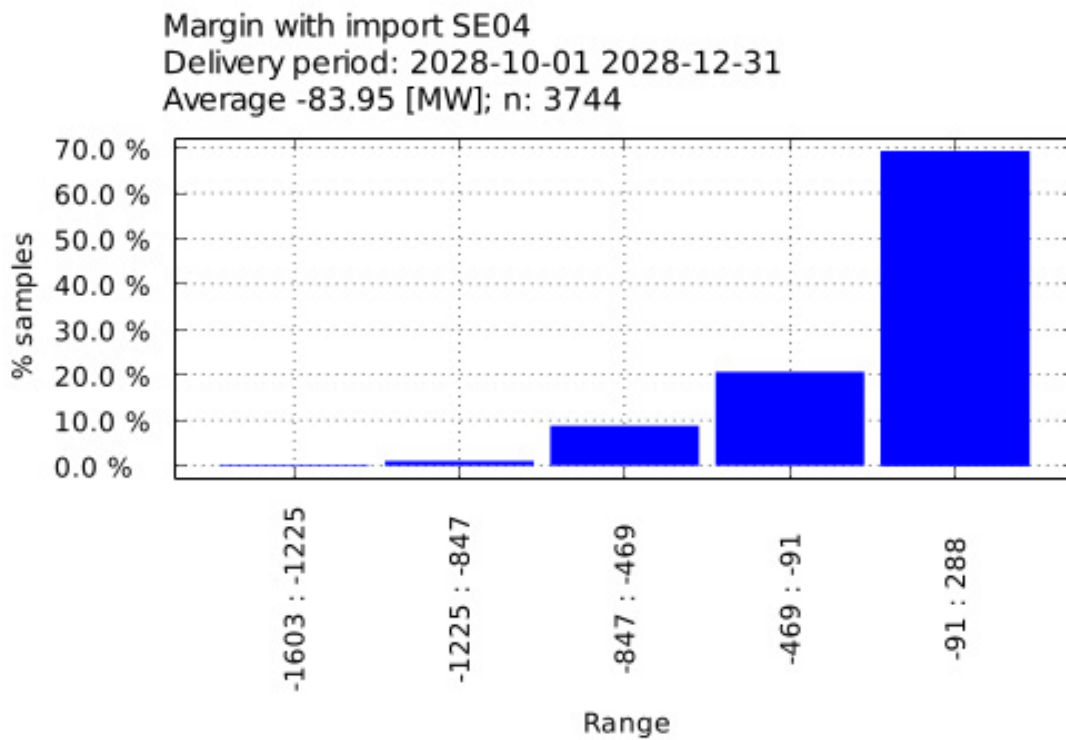


Figure 83 NP for SE04, delivery period 01.10.2028-31.12.2028

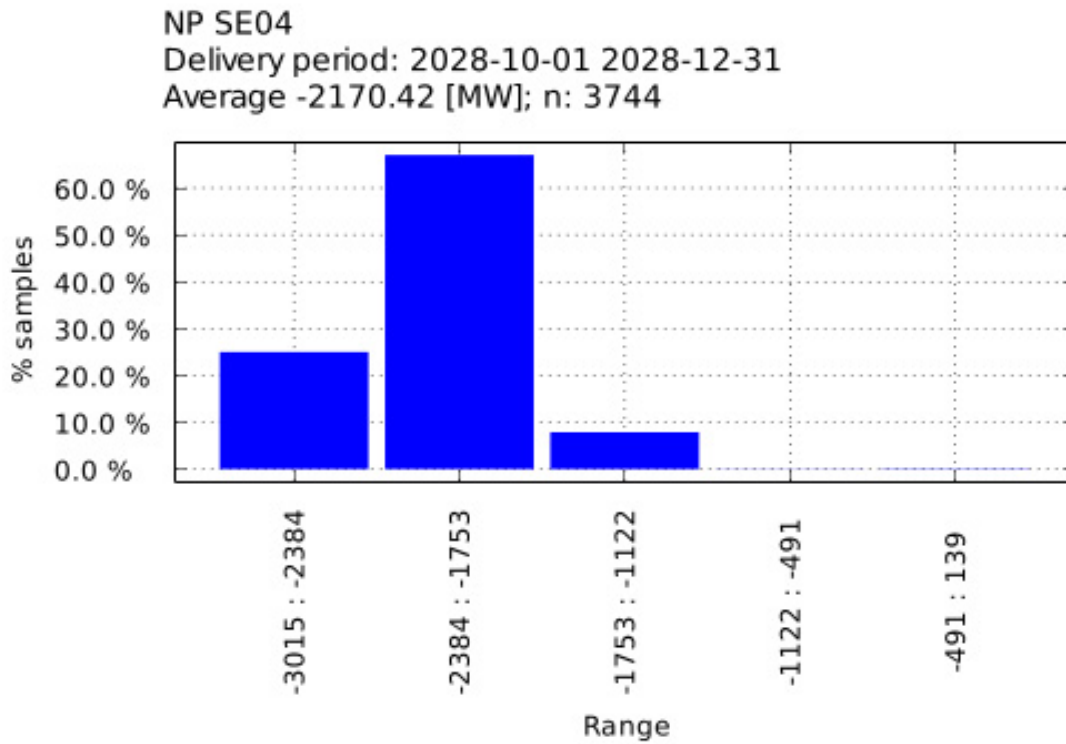


Figure 84 ENS for SE04, delivery period 01.10.2028-31.12.2028

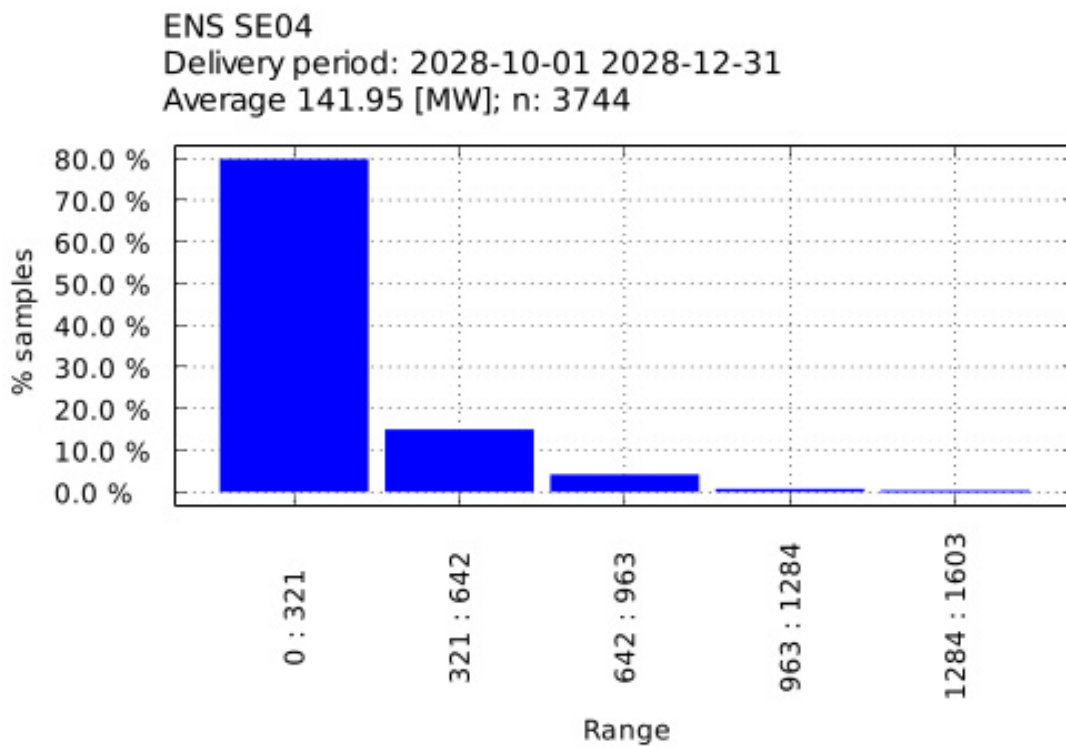


Figure 85 ENS for SK00, delivery period 01.10.2028-31.12.2028

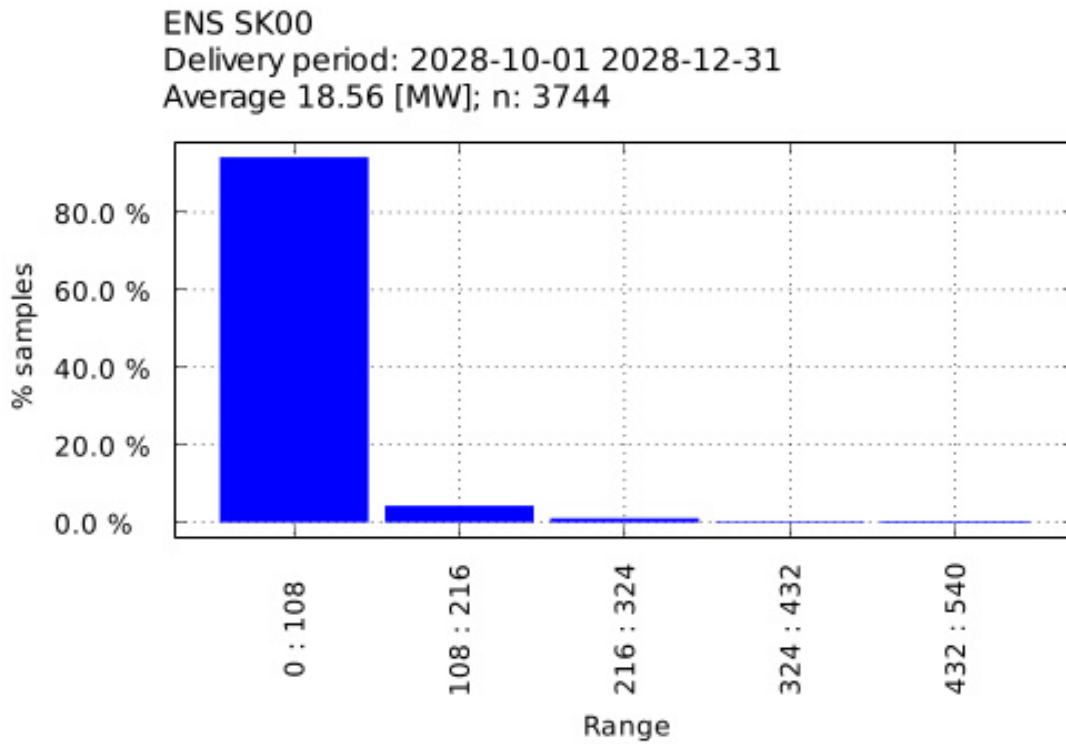


Figure 86 Margin With Import for SK00, delivery period 01.10.2028-31.12.2028

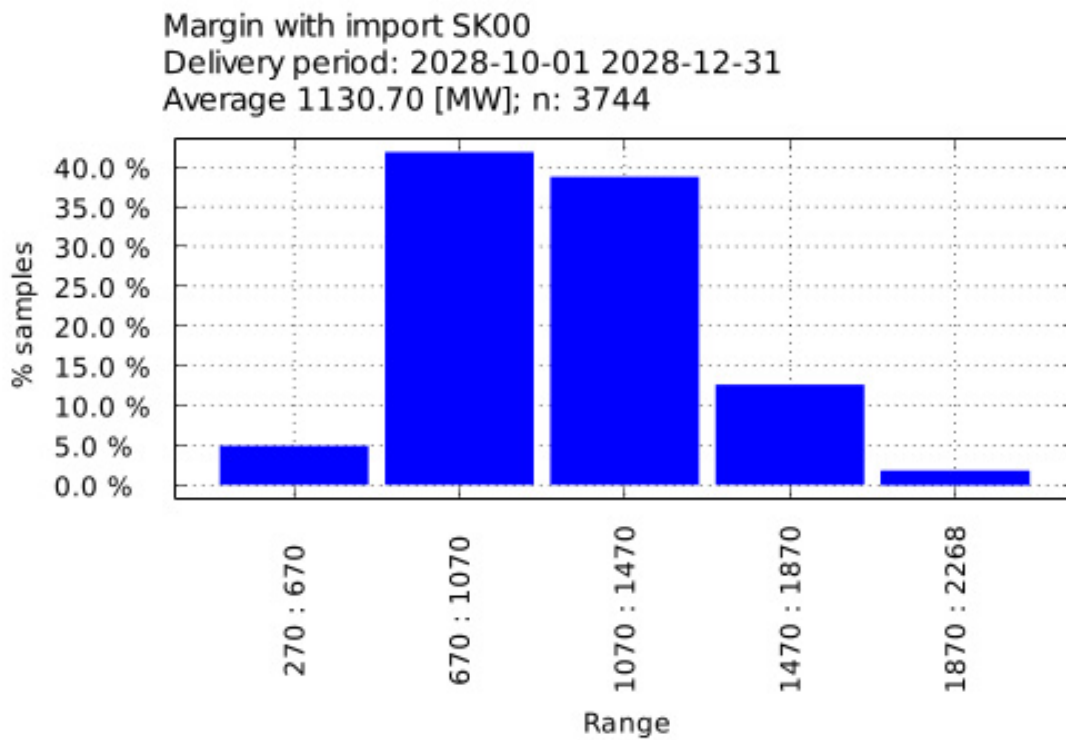


Figure 87 Margin Without Import for SK00, delivery period 01.10.2028-31.12.2028

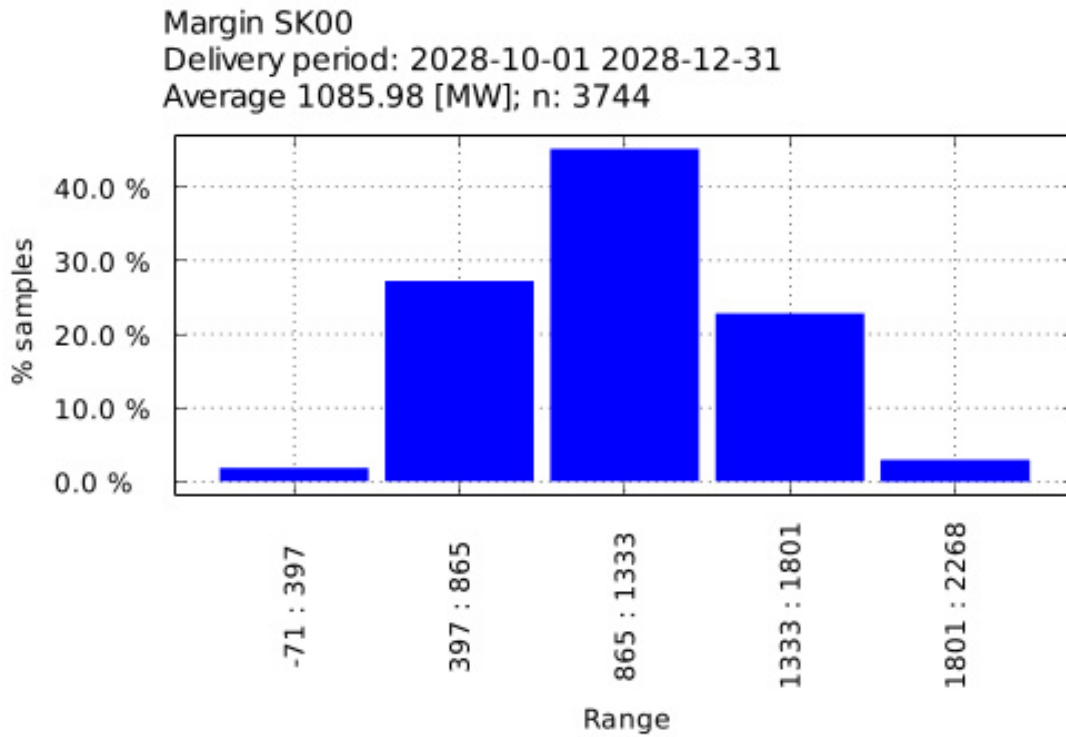
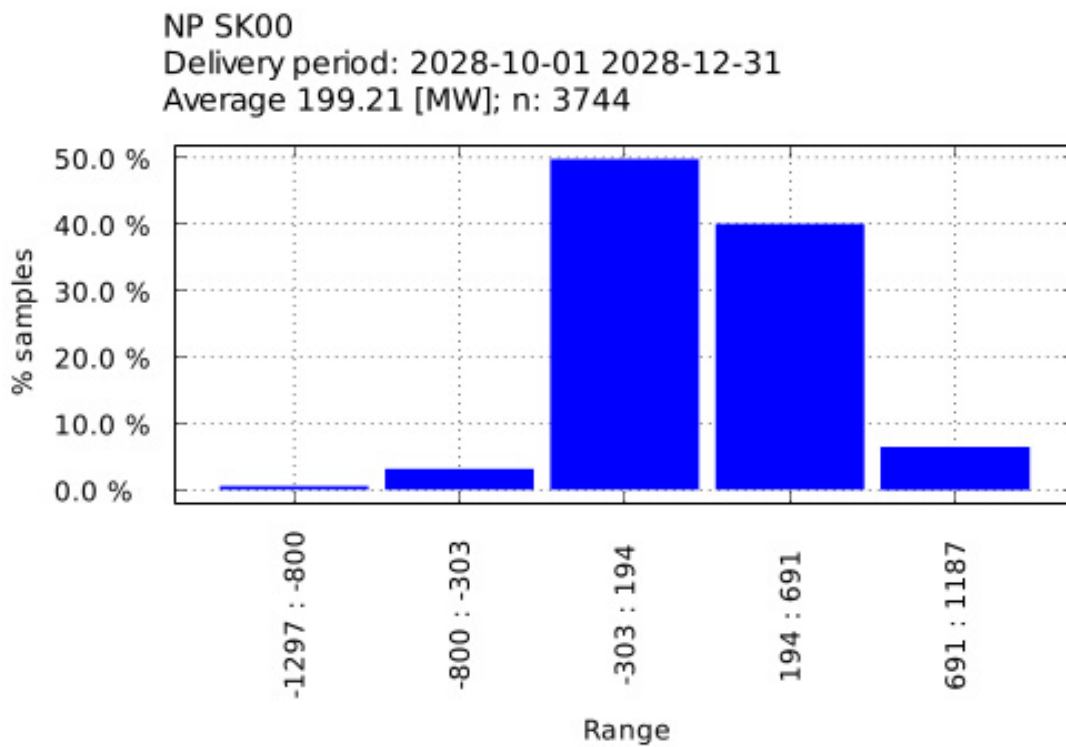


Figure 88 NP for SK00, delivery period 01.10.2028-31.12.2028



## 4 Glossary

CM	Capacity Mechanism
MEC	Maximum Entry Capacity
RCC	Regional Coordination Centre
ENS	Energy Not Supplied
TSO	Transmission System Operator
MTU	Market Time Unit pursuant to the Transparency Regulation
LOLE	Loss of Load Expectation
ERAA	European Resource Adequacy Assessment
ENTSO-E	European Network of Transmission System Operators for Electricity

© 2026 TSCNET Services GmbH. All rights reserved.

The information contained in this document is proprietary to TSCNET Services GmbH and is disclosed in confidence. The information contained herein shall be kept strictly confidential and shall not be used, disclosed to other so reproduced without the expressed written consent of TSCNET Services GmbH. Nothing contained in this document shall constitute any warranty, guarantee or liability for TSCNET Services GmbH, its subsidiaries and affiliates, but is for information purposes.